

**Drawing number****03 438 26 13 0**

Stromlaufplan

Control / Steuerung	SH3	
Hoist Motor / Hubmotor	12/2H33, 12/2H42	
Type / Ausführung	B (control for crane customer)	
Overload Device / Lastwächter	SLE3	
Voltage / Spannung	440-480V, 575-600V / 110/120V 60Hz	
	380-415V / 110/120V 50Hz	
Fuses / Sicherungen	F41-43	6A Class CC
Fuses / Sicherungen by customer / bauseits	main fuse	15A Class CC
	control fuse	0.63A

Document Dokument	Sheet Blatt
BILL OF MATERIALS GERÄTELISTE	1 (1)
POWER SUPPLY STROMVERSORGUNG	1 (8)
HOIST HUBWERK	2 (8)
TROLLEY FAHRWERK	4 (8)
TERMINAL DIAGRAM X16 KLEMMENPLAN X16	5 (8)
LOCATION DIAGRAM A16 AUFBAUPLAN A16	7 (8)
CABEL DIAGRAM KABELPLAN	8 (8)

Date / Datum	Dept. / Abteilung	Designer / Bearbeiter	Page / Seite
07.08.2018	G-Platform	Schnell	1/1

**Drawing number**

**03 438 26 13 0**

Stromlaufplan

**BILL OF MATERIALS**

Lokcat. Ort	Refer. Referenz	Qty. Anzahl	Spezifikation Typ	Discription Benennung	Fabricate Hersteller	Item Code Sach-Nr.
+A16	-A275	1	SLE3 110/120V	OVERLOAD DEVICE LASTWÄCHTER		579 770 0
+A16	-F41-F43	3	USBCC1	FUSE HOLDER SICHERUNGSTRENNER	FERRAZ	510 078 0
		3	ATDR6 10x38 6A	FUSE LINK SCHMELZEINSATZ	FERRAZ	510 083 0
+A16	-G21	1	1/024.000.6 3A	RECTIFIER GLEICHRICHTER	MAYR	04 430 00 88 0
+A16	-K20	1	LC1-D12 G7	CONTACTOR SCHÜTZ	SCHNEIDER	582 022 0
		1	LAD-N11G	AUXILIARY CONTACT BLOCK HILFSSCHALTERBLOCK	SCHNEIDER	582 069 0
+A16	-K23-K24	2	LC1-D12 G7	CONTACTOR SCHÜTZ	SCHNEIDER	582 022 0
		2	LAD-N22G	AUXILIARY CONTACT BLOCK HILFSSCHALTERBLOCK	SCHNEIDER	582 072 0
+A16	-K25	1	LC1-D128 G7	CONTACTOR SCHÜTZ	SCHNEIDER	582 045 0
+A16	-K41-K42	1	LC2-K09 G7	CONTACTOR SCHÜTZ	SCHNEIDER	579 472 0
+A16	-K45	1	LC1-K09008 G7	CONTACTOR SCHÜTZ	SCHNEIDER	579 473 0
+A16	-S220	1	GE-S125.04	GEAR-TYPE LIMIT SWITCH GETRIEBEENDSCHALTER	STROMAG	580 005 0
+A16	-S260/-S261	2	E 215-16-11B	PUSH BUTTON DRUCKTASTER	ABB	578 553 0
+A16	-X16	2	WPE10	PE-TERMINAL SCHUTZLEITERKLEMME	WEIDMUELLER	519 517 0
		3	WDU10	TERMINAL KLEMME	WEIDMUELLER	519 512 0
		3	A2C 2.5 PE	PE-TERMINAL SCHUTZLEITERKLEMME	WEIDMUELLER	519 634 0
		19	A2C 2.5	TERMINAL KLEMME	WEIDMUELLER	519 633 0
+A16	-X16.1	2	A2C 2.5 PE	PE-TERMINAL SCHUTZLEITERKLEMME	WEIDMUELLER	519 634 0
		7	A2C 2.5	TERMINAL KLEMME	WEIDMUELLER	519 633 0
+TR1	-B275	1		LOAD SENSOR LASTSENSOR		
+TR1	-M21	1		HOIST MOTOR HUBMOTOR		
+TR1	-M41	1		TROLLEY MOTOR KATZFAHRMOTOR		
+TR1	-S228	1		BLOCK OPERATED UPPER LIMT SWITCH ENDSCHALTER (US)		
+TR1	-S420	1		TROLLEY LIMIT SWITCH KATZFAHRENDSCHALTER		

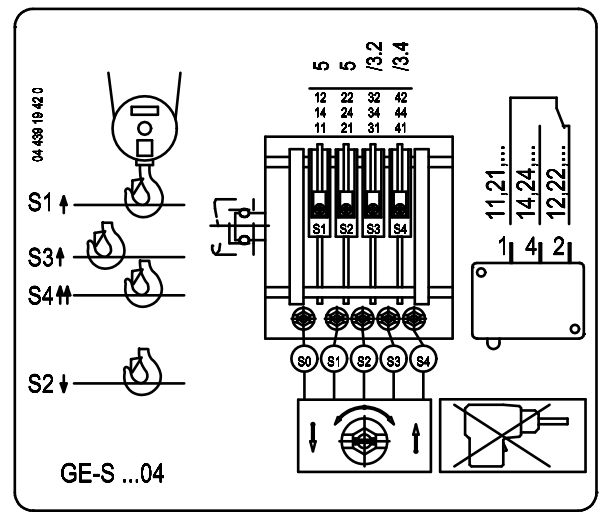
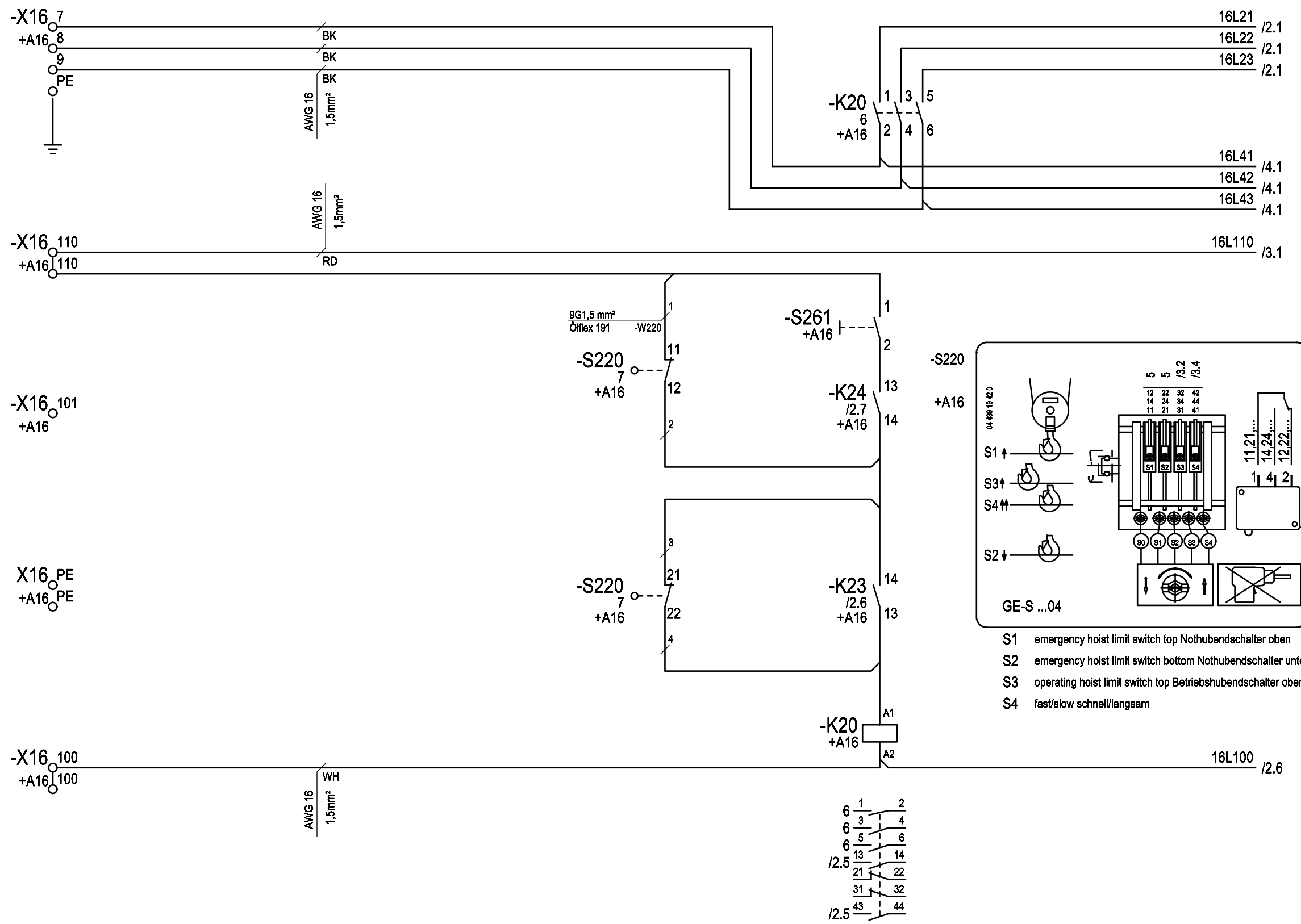
Date / Datum	Dept. / Abteilung	Designer / Bearbeiter	Page / Seite
07.08.2018	G-Plattform	Schnell	1/1

power supply  
Stromzuführung

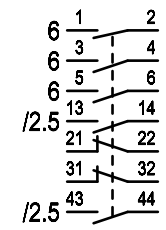
emergency hoist limit switch  
Nothubendschalter

main fuse  
Anschlussicherung  
15A Class CC

control fuse  
Steuersicherung  
0.63A



- S1 emergency hoist limit switch top Nothubendschalter oben
- S2 emergency hoist limit switch bottom Nothubendschalter unten
- S3 operating hoist limit switch top Betriebshubendschalter oben
- S4 fast/slow schnell/langsam



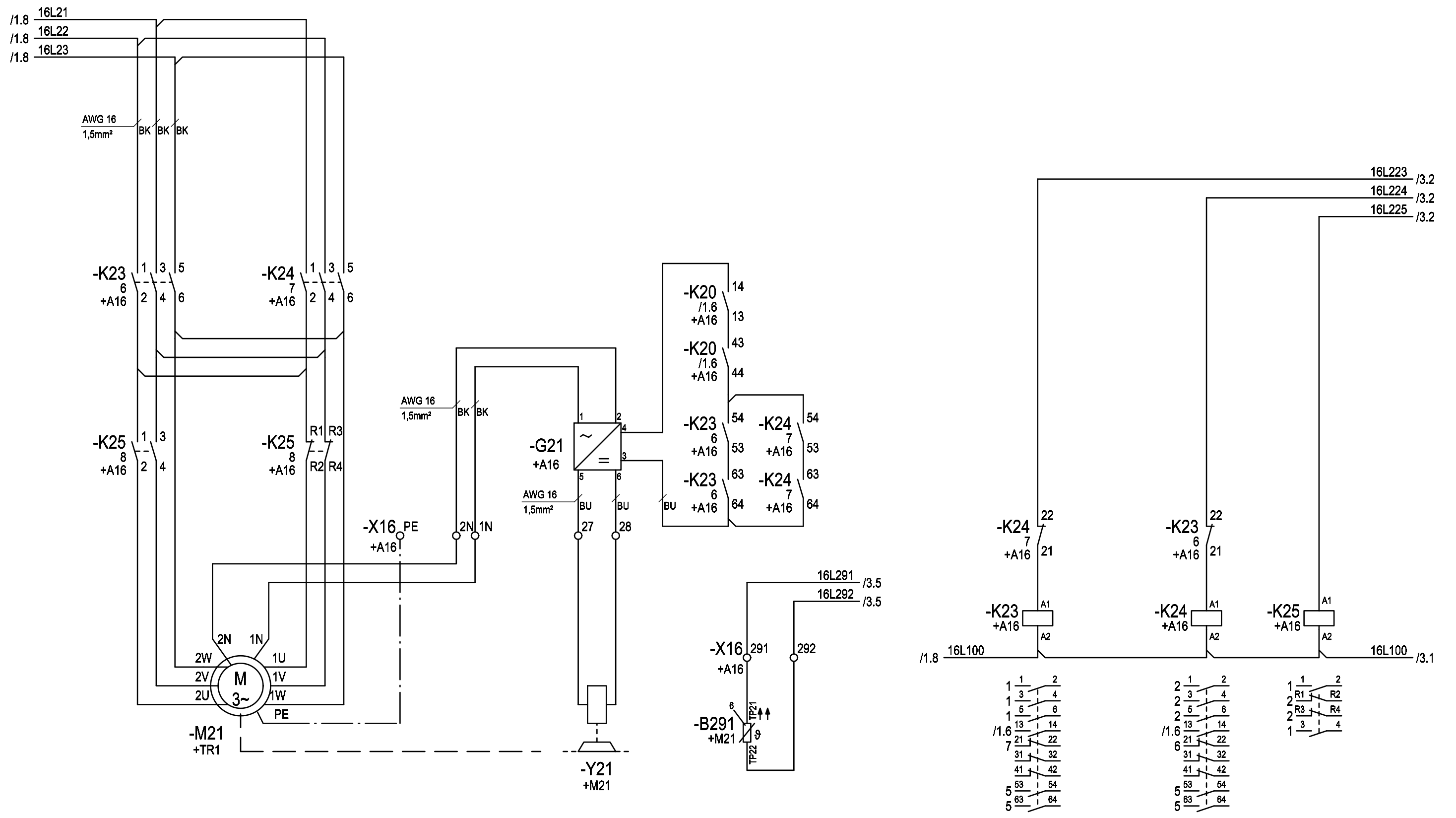
Changes		Date	Name	Date	Name	Copyright according to DIN ISO 16016	circuit diagram SH3 H33/H42 type B SLE3 power supply	=	03 438 26 13 0	Page: 1 of: 8	
		07.08.18	Schnell	Editor	23.10.17						Huhnd.
				Proved	24.10.17						Schnell
				Release	24.10.17						Huhnd.
Rev.			Plot	03.08.2018	Rep. by	Rep. for	Origin	Order No.	Serial No. xxxxxx		

hoist motor  
Hubmotor

hoisting  
heben

lowering  
senken

fast  
schnell



Changes	Date	Name	Date	Name
	07.08.18	Schnell	23.10.17	Huhnd.
			24.10.17	Schnell
			24.10.17	Huhnd.

Rev.		Plot	03.08.2018	Rep. by		Rep. for		Origin	
------	--	------	------------	---------	--	----------	--	--------	--

Copyright according to DIN ISO 16016

circuit diagram  
SH3 H33/H42 type B SLE3  
hoisting

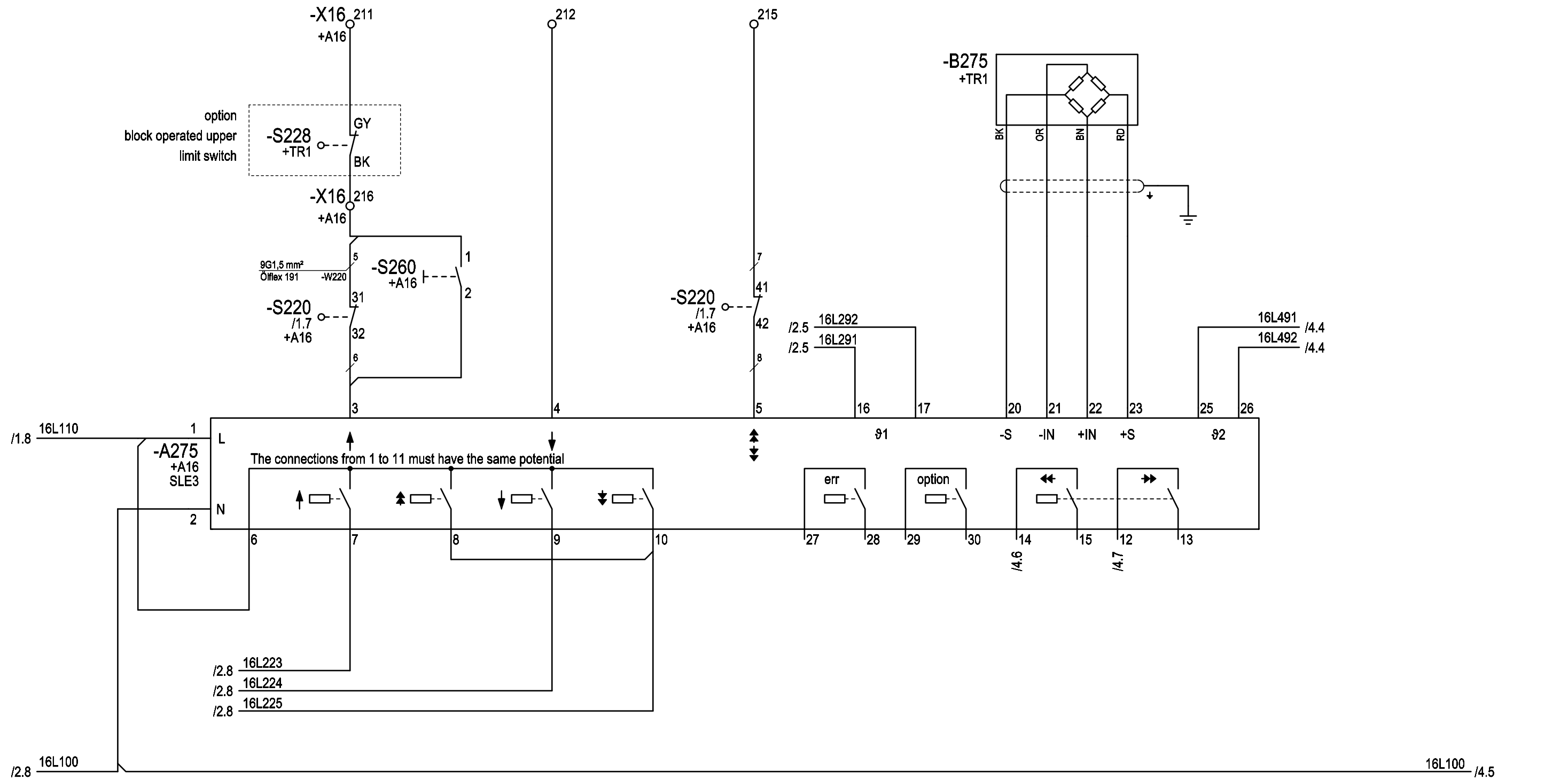
Order No. Serial No. xxxxxx  
03 438 26 13 0  
Page: 2 of: 8

hoisting  
heben

lowering  
senken

fast  
schnell

temperature / load monitoring  
Temperatur- / Lastüberwachung



Changes	Date	Name	Date	Name
	07.08.18	Schnell	23.10.17	Huhnd.
			24.10.17	Schnell
			24.10.17	Huhnd.
Rev.		Plot	03.08.2018	Rep. by

Rep. for	Origin
----------	--------

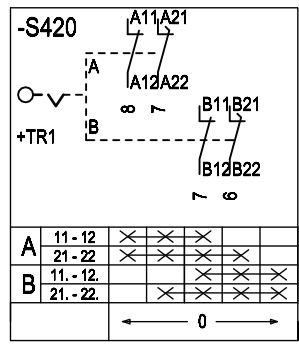
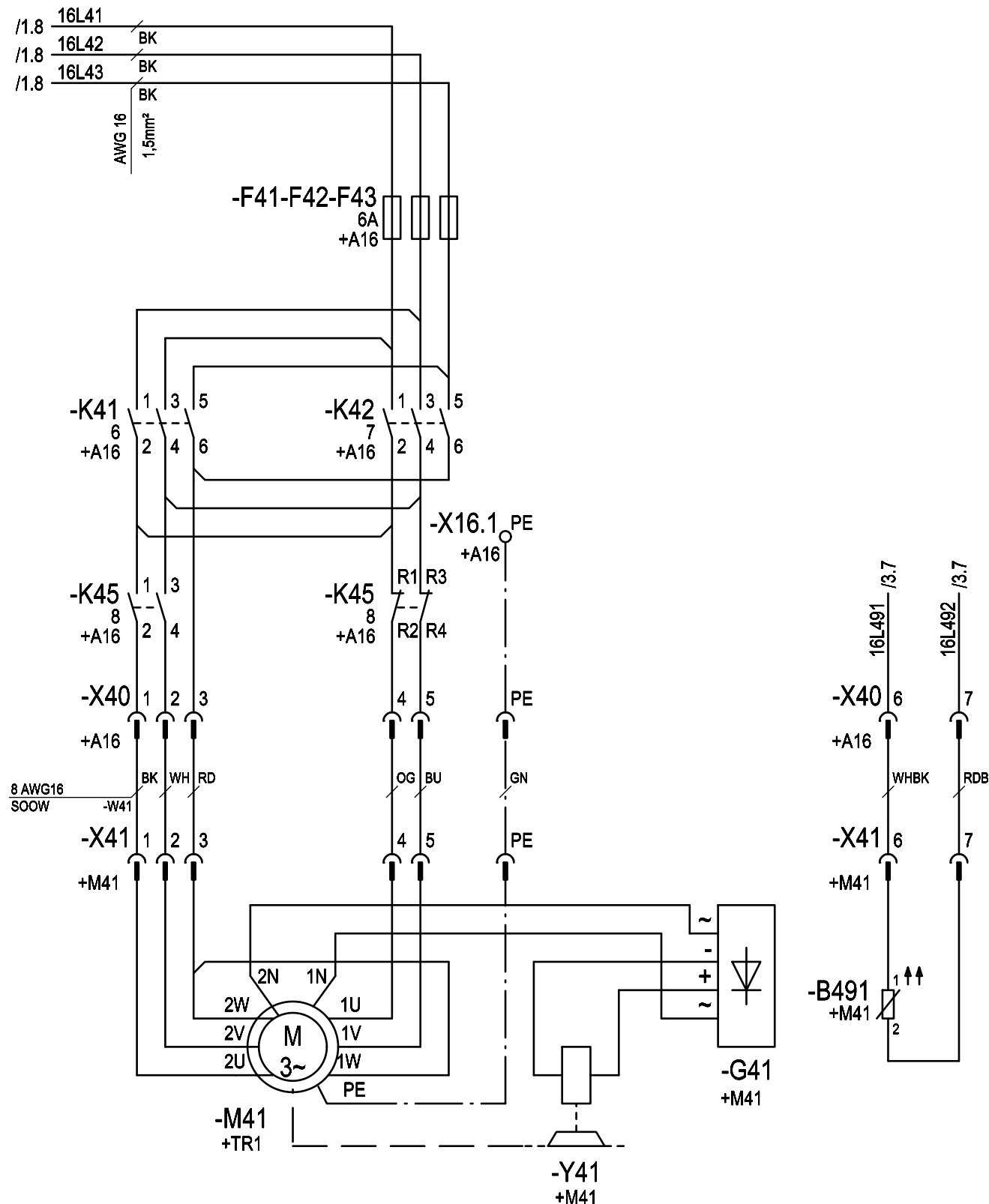
Copyright according to DIN ISO 16016	Order No.	Serial No. xxxxxx
--------------------------------------	-----------	-------------------

Page: 3
of: 8

circuit diagram  
SH3 H33/H42 type B SLE3  
hoisting

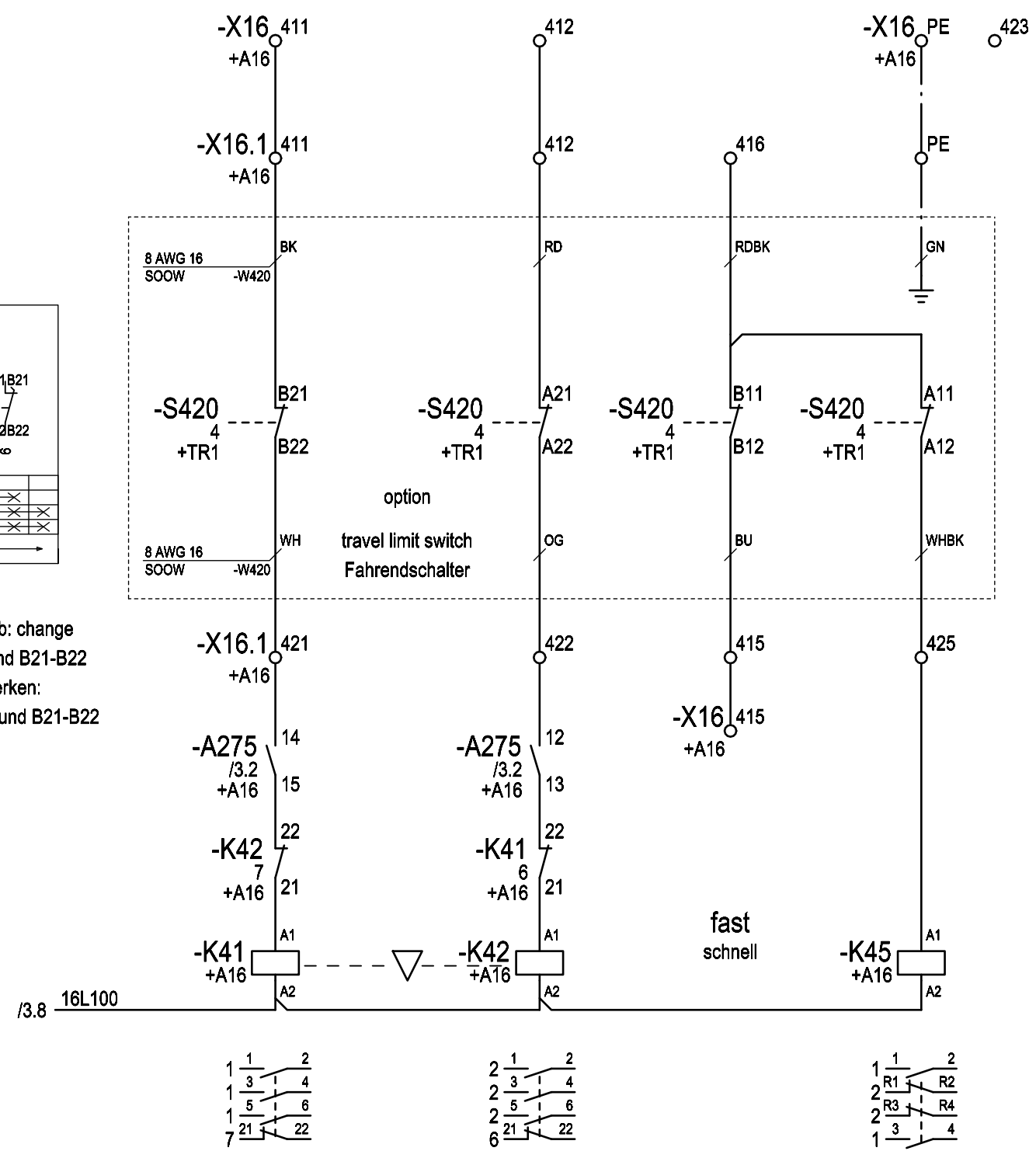
03 438 26 13 0

cross travel motor  
Katzfahrmotor



**Attention!**  
with double-rail crab: change contact A21-A22 and B21-B22  
Bei Obergurttfahrwerken: Kontakte A21-A22 und B21-B22 tauschen

left links  
right rechts



Changes	Date	Name	Date	Name
	07.08.18	Schnell	23.10.17	Huhnd.
			24.10.17	Schnell
			24.10.17	Huhnd.

Rev.		Plot	03.08.2018	Rep. by		Rep. for		Origin	
------	--	------	------------	---------	--	----------	--	--------	--

Copyright according to DIN ISO 16016	circuit diagram SH3 H33/H42 type B SLE3 trolley	Order No.	Serial No. xxxxxx
--------------------------------------	---	-----------	-------------------

=	
+	
03 438 26 13 0	Page: 4 of: 8

1		2				3				4				5				6				7				8												
	AWG 16	1,5mm <sup>2</sup>							WH																													
	AWG 16	1,5mm <sup>2</sup>											RD																									
	AWG 16	1,5mm <sup>2</sup>																																				
	AWG 16	1,5mm <sup>2</sup>		BK	BK	BK				BK	BK																											
-W220	Öflex 191																																					
Kabelbezeichnung cable designation	Kabel-Typ cable type			2	4	6					2	1	5	6																								
Zielzeichen target symbol	Anschlussbezeichnung designation of connection																																					
	Kennzeichen sign		-K20	-K20	-K20																																	
Anschluss-Leiste terminal connector strip	Darstellungsort place discription	/1.2	/1.2	/1.2	/1.2	/2.3	/2.3	/2.3	/2.4	/2.4	/2.4	/1.2	/1.2	/1.2	/1.2	/1.2	/1.2	/3.2	/3.3	/3.4	/3.2	/2.5	/2.5	/4.6	/4.7	/4.7	/4.8	/1.2	/4.8									
	Klemmentyp typ	WPE10	WDU10	WDU10	WDU10	WPE10	A2C 2.5	A2C 2.5	A2C 2.5	A2C 2.5	A2C 2.5	A2C 2.5 PE	A2C 2.5	A2C 2.5	A2C 2.5	A2C 2.5	A2C 2.5	A2C 2.5	A2C 2.5	A2C 2.5	A2C 2.5	A2C 2.5	A2C 2.5	A2C 2.5	A2C 2.5	A2C 2.5	A2C 2.5	A2C 2.5 PE	A2C 2.5 PE									
	Klemmen-Nr. terminal number	PE	7	8	9	PE	2N	1N	27	28	PE	100	100	101	110	110	211	212	215	216	291	292	411	412	415	423	PE	PE										
	Laschenverbindung link	○	○	○	○	○	○	○	○	○	○	●	●	○	●	●	○	○	○	○	○	○	○	○	○	○	○	○	○	○	○	○	○					
Zielzeichen target symbol	Anschlussbezeichnung designation of connection	PE				PE	2N	1N									GY				BK	TP21	TP22															
	Kennzeichen sign																																					
Kabelbezeichnung cable designation	Kabel-Typ cable type	+A16-PE				+TR1-M21	+TR1-M21	+TR1-M21	+M21-Y21	+M21-Y21							+TR1-S228				+TR1-S228	+M21-B291	+M21-B291															

von übrigen Blättern  
insgesamt  
Anschl. siehe Blatt

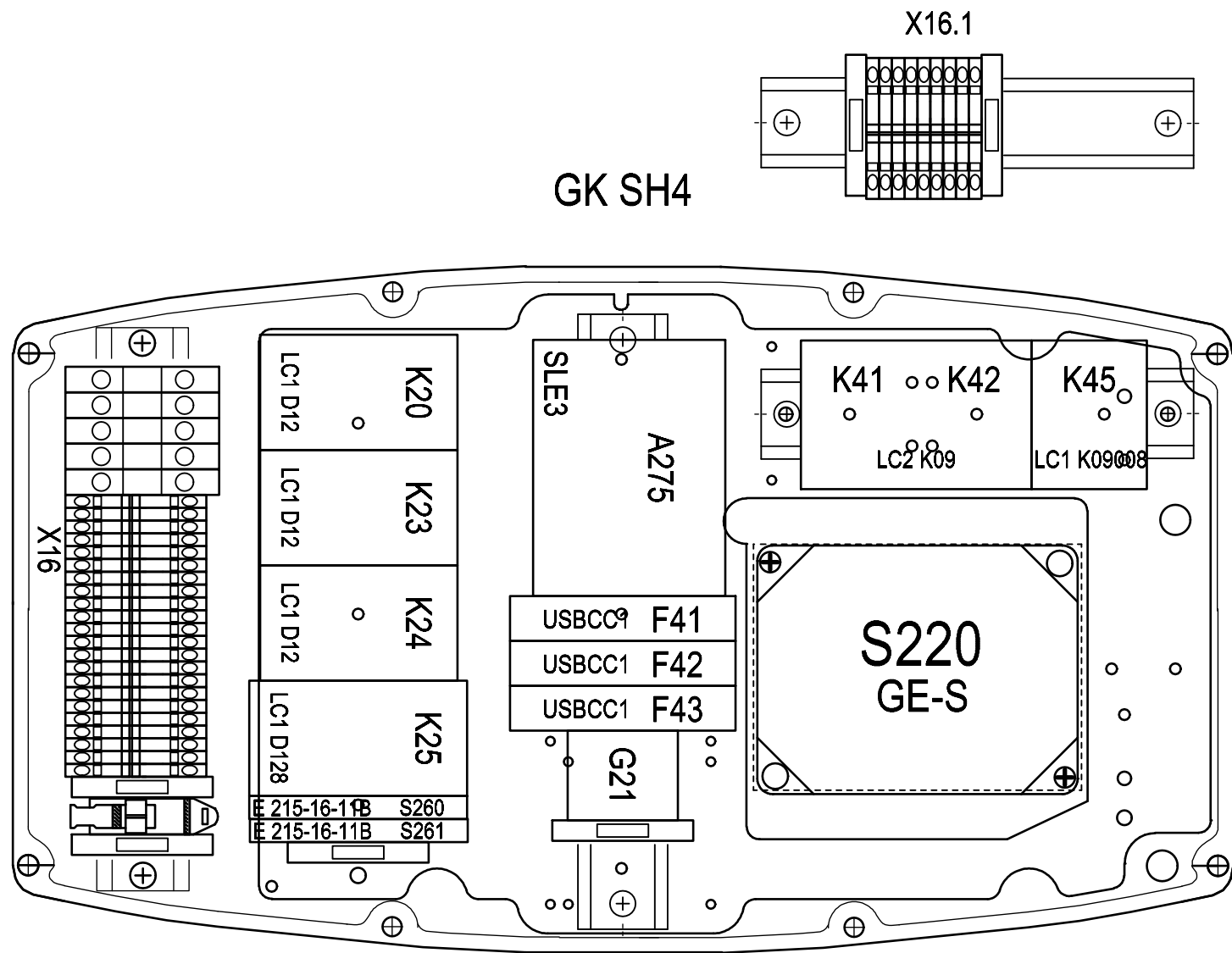
27

1		2				3					4					5					6					7					8																																							
Kabelbezeichnung cable designation		Kabel-Typ cable type				PE					411					14					412					12					415					A1					PE																													
Zielzeichen target symbol	Anschlussbezeichnung designation of connection				-X40					-X16					-A275					-X16					-A275					-X16					-K45					-X16																														
	Kennzeichen sign																																																																					
-X16.1		Darstellungsort place description				/4.2					/4.6					/4.6					/4.7					/4.7					/4.7					/4.8					/4.7					/4.8																								
		Klemmentyp typ				A2C2.5 PE					A2C2.5					A2C2.5					A2C2.5					A2C2.5					A2C2.5					A2C2.5					A2C2.5					A2C2.5 PE					A2C2.5 PE																			
Klemmen-Nr. terminal number		PE				411					421					412					422					415					425					416					PE					PE																								
Anschluss-Leiste terminal connector strip		Laschenverbindung link				○					○					○					○					○					○					○					○					○					○					○														
Zielzeichen target symbol	Anschlussbezeichnung designation of connection				B21					B22					A21					A22					B12					A12					B11					PE					PE																									
	Kennzeichen sign																																																																					
Kabelbezeichnung cable designation		Kabel-Typ cable type				+TR1-S420					+TR1-S420					+TR1-S420					+TR1-S420					+TR1-S420					+TR1-S420					+TR1-S420					+TR1-S420					+TR1-S420					+TR1-S420																			
-W420		SOOW 8 AWG 16				BK					WH					RD					OG					BU					WHBK					RDBK					GN																													

von übrigen Blättern	9
insgesamt	
Anschl. siehe Blatt	

Changes	Date	Name	Date	Name	Copyright according to	terminal diagram		=		
	07.08.18	Schnell	Editor	23.10.17	Huhnd.	DIN ISO 16016	=+A16-X16.1	=		
			Proved	24.10.17	Schnell			+A16		
			Release	24.10.17	Huhnd.		03 438 26 13 0	Page: 6		
			Plot	03.08.2018				of: 8		
Rep. by			Rep. for			Origin		Order. no.	Serial no. XXXXXX	





Changes	Date	Name	Date	Name
	07.08.18	Schnell	23.10.17	Huhnd.
			24.10.17	Schnell
			24.10.17	Huhnd.

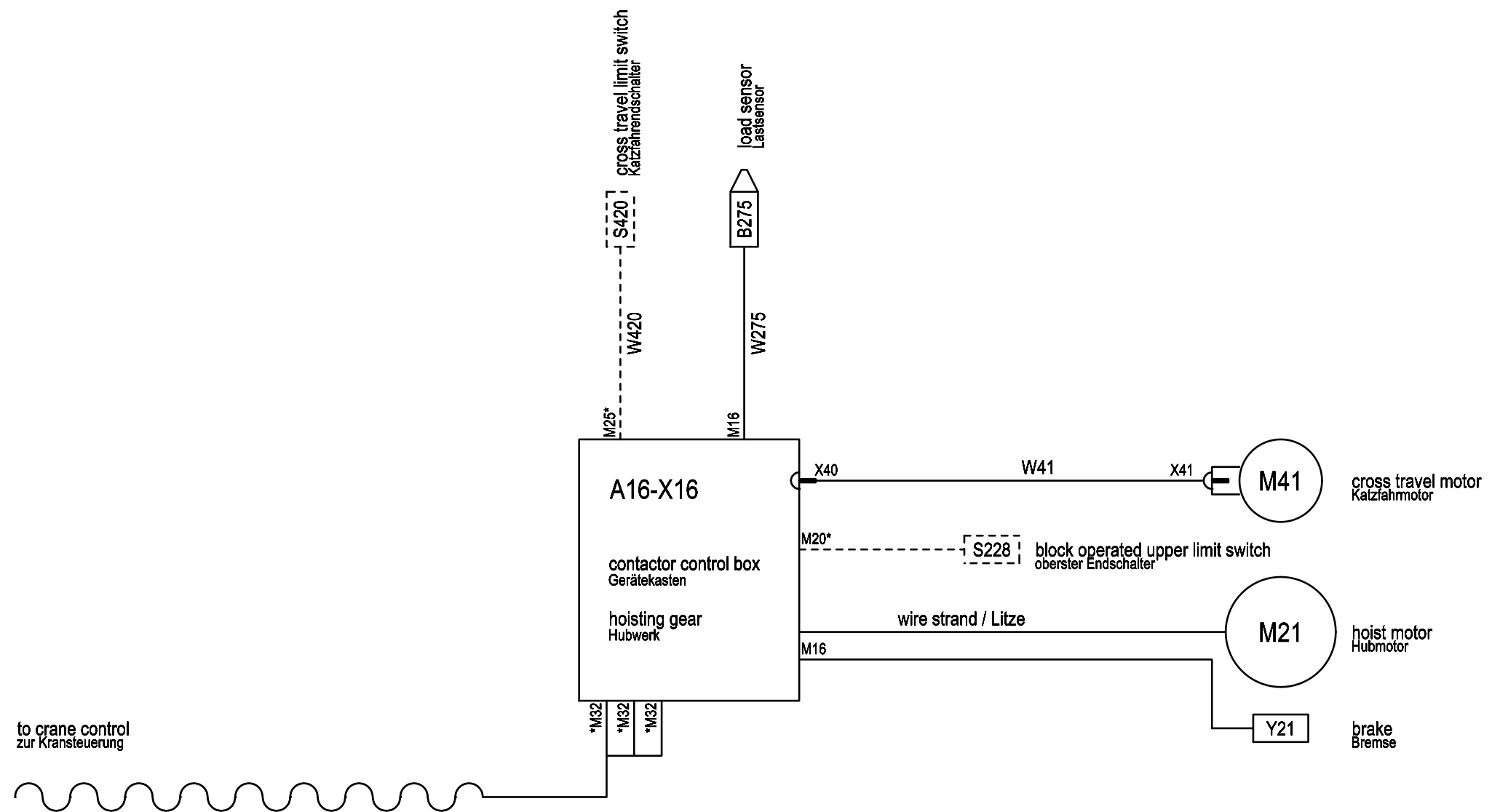
Rev.		Plot	03.08.2018	Rep. by		Rep. for		Origin	
------	--	------	------------	---------	--	----------	--	--------	--

Copyright according to DIN ISO 16016

location diagram  
SH3 H33/H42 type B SLE3  
+A16

Order No.      Serial No. xxxxxx

=  
+  
03 438 26 13 0      Page: 7  
of: 8



\* blind plug  
Blindstopfen

Changes	Date	Name	Date	Name
	07.08.18	Schnell	23.10.17	Huhnd.
			24.10.17	Schnell
			24.10.17	Huhnd.
Rev.			Plot	03.08.2018

Rep. by	Rep. for	Origin
---------	----------	--------

Copyright according to DIN ISO 16016	cable diagram SH3 H33/H42 type B SLE3
Order No.	Serial No. xxxxxx

=	
+	
03 438 26 13 0	Page: 8 of: 8