

**Drawing number 70012441**  
Stromlaufplan

Control / Steuerung	SH6	
Hoist Motor / Hubmotor	12/2H72	
Type / Ausführung	B (control for crane customer)	
Overload Device / Lastwächter	SLE3	
Voltage / Spannung	208-230V / 110/120V 60Hz	
Fuses / Sicherungen	F24-26	25A Class CC
	F41-43	10A Class CC
Fuses / Sicherungen by customer / bauseits	main fuse	80A Class J
	control fuse	2.5A

Document Dokument	Sheet Blatt
BILL OF MATERIALS GERÄTELISTE	1 (2)
POWER SUPPLY STROMVERSORGUNG	1 (9)
HOIST HUBWERK	2 (9)
TROLLEY FAHRWERK	5 (9)
TERMINAL DIAGRAM X16 KLEMMENPLAN X16	7 (9)
LOCATION DIAGRAM A16 AUFBAUPLAN A16	8 (9)
CABEL DIAGRAM KABELPLAN	9 (10)

Date / Datum	Dept. / Abteilung	Designer / Bearbeiter	Page / Seite
07.08.2018	G-Platform	Schnell	1/1

**BILL OF MATERIALS**

Lokcat. Ort	Refer. Referenz	Qty. Anzahl	Spezifikation Typ	Discription Benennung	Fabricate Hersteller	Item Code Sach-Nr.
+A16	-A275	1	SLE3 110/120V	OVERLOAD DEVICE LASTWÄCHTER		579 770 0
+A16	-F24-F26	3	USBCC1	FUSE HOLDER SICHERUNGSTRENNER	FERRAZ	510 078 0
		3	ATDR10 10x38 25A	FUSE LINK SCHMELZEINSATZ	FERRAZ	510 087 0
+A16	-F41-F43	3	USBCC1	FUSE HOLDER SICHERUNGSTRENNER	FERRAZ	510 078 0
		3	ATDR10 10x38 10A	FUSE LINK SCHMELZEINSATZ	FERRAZ	510 084 0
+A16	-G21	1	20/017.000.2 1,8A	RECTIFIER GLEICHRICHTER	MAYR	04 430 02 88 0
+A16	-K20	1	LC1-D80 G7	CONTACTOR SCHÜTZ	TELEMECANIQUE	582 110 0
		1	LAD-N11G	AUXILIARY CONTACT BLOCK HILFSSCHALTERBLOCK	TELEMECANIQUE	582 069 0
+A16	-K21-K22	2	LC1-D95 G7	CONTACTOR SCHÜTZ	TELEMECANIQUE	582 111 0
		1	LAD-N11G	AUXILIARY CONTACT BLOCK HILFSSCHALTERBLOCK	TELEMECANIQUE	582 069 0
		1	LAD-N22G	AUXILIARY CONTACT BLOCK HILFSSCHALTERBLOCK	TELEMECANIQUE	582 072 0
+A16	-K23-K24	2	LC1-D25 G7	CONTACTOR SCHÜTZ	TELEMECANIQUE	582 043 0
		2	LAD-N11G	AUXILIARY CONTACT BLOCK HILFSSCHALTERBLOCK	TELEMECANIQUE	582 069 0
+A16	-K29.1 / .2	2	LC1-D09 G7	CONTACTOR SCHÜTZ	TELEMECANIQUE	582 041 0
+A16	-K41-K42	1	LC2-K09 G7	CONTACTOR SCHÜTZ	TELEMECANIQUE	579 472 0
+A16	-K45	1	LC1-K09008 G7	CONTACTOR SCHÜTZ	TELEMECANIQUE	579 473 0
+A16	-Q29	1	GV2 RT20	CIRCUIT BREAKER LEISTUNGSSCHALTER	TELEMECANIQUE	579 508 0
		1	GV AN20	AUXILIARY CONTACT BLOCK HILFSSCHALTERBLOCK	TELEMECANIQUE	579 505 0
+A16	-S220	1	GE-S125.04	GEAR-TYPE LIMIT SWITCH GETRIEBEENDSCHALTER	STROMAG	580 005 0
+A16	-S260/-S261	2	E 215-16-11B	PUSH BUTTON DRUCKTASTER	ABB	578 553 0
+A16	-X16	1	WPE35	PE-TERMINAL SCHUTZLEITERKLEMME	WEIDMUELLER	519 519 0
		3	WDU35	TERMINAL KLEMME	WEIDMUELLER	519 514 0
		1	WPE16	PE-TERMINAL SCHUTZLEITERKLEMME	WEIDMUELLER	519 518 0
		6	WDU16	TERMINAL KLEMME	WEIDMUELLER	519 513 0
		6	WDU6	TERMINAL KLEMME	WEIDMUELLER	519 511 0
		4	A2C 2.5 PE	PE-TERMINAL SCHUTZLEITERKLEMME	WEIDMUELLER	519 634 0
		21	A2C 2.5	TERMINAL KLEMME	WEIDMUELLER	519 633 0
+TR	-B275	1		LOAD SENSOR LASTSENSOR		
+TR	-M21	1		HOIST MOTOR HUBMOTOR		

**Drawing number**      **70012441**  
Stromlaufplan

**BILL OF MATERIALS**

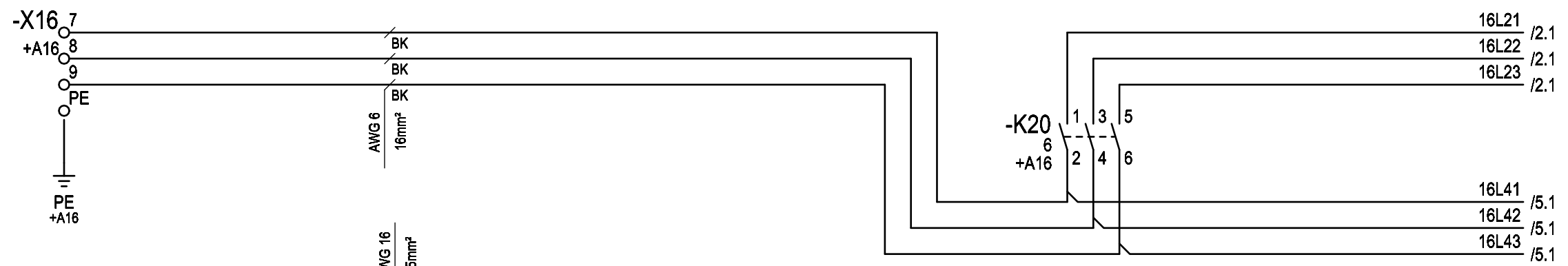
Lokcat. Ort	Refer. Referenz	Qty. Anzahl	Spezifikation Typ	Discription Benennung	Fabricate Hersteller	Item Code Sach-Nr.
+TR	-M41	1		TROLLEY MOTOR KATZFAHRMOTOR		
+TR	-S228	1		BLOCK OPERATED UPPER LIMT SWITCH ENDSCHALTER (US)		
+TR	-S420	1		TROLLEY LIMIT SWITCH KATZFAHRENSCHALTER		

Date / Datum	Dept. / Abteilung	Designer / Bearbeiter	Page / Seite
07.08.2018	G-Plattform	Schnell	2/2

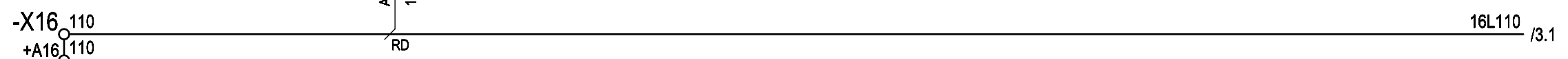
**Stromzuführung**  
power supply

**Nothubendschalter**  
emergency hoist limit switch

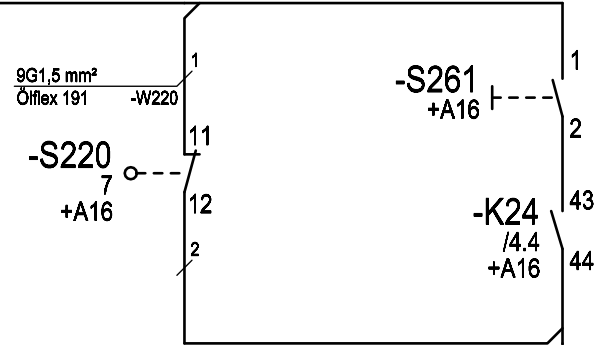
Anschlussicherung  
main fuse  
80A Class J



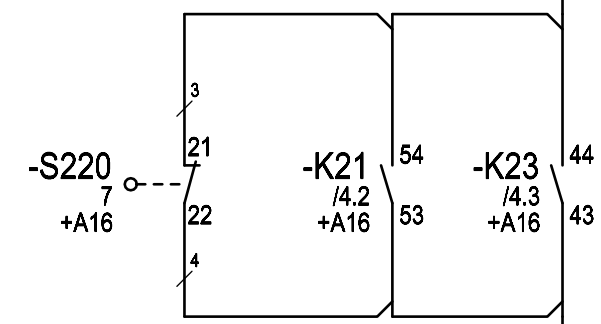
Steuersicherung  
control fuse  
2.5A



-X16 101  
+A16



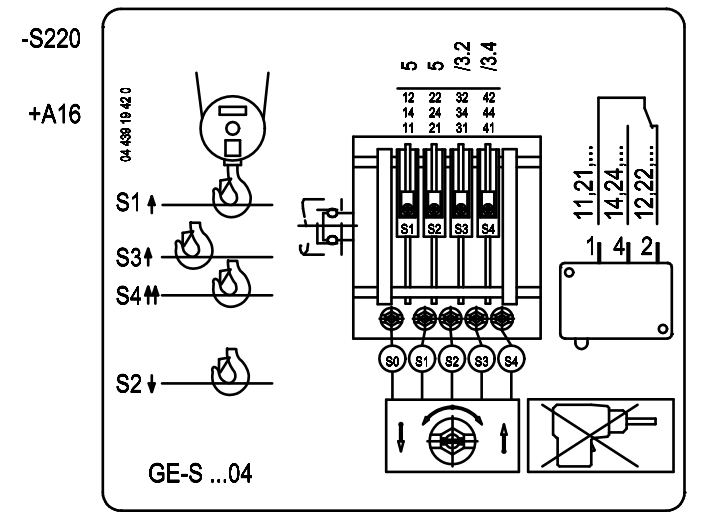
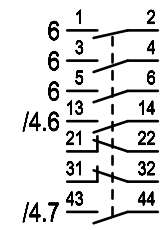
X16 PE  
+A16 PE



-X16 100  
+A16 100

AWG 16 1.5mm² WH

-K20  
+A16



- S1 Nothubendschalter oben emergency hoist limit switch top
- S2 Nothubendschalter unten emergency hoist limit switch bottom
- S3 Betriebshubendschalter oben operating hoist limit switch top
- S4 schnell/langsam fast/slow

16L100 /3.1

Changes	Date	Name	Date	Name
	07.08.18	Schnell	08.06.18	Huhnd.
			08.06.18	Schnell
			08.06.18	Huhnd.
Rev.		Plot	06.08.2018	Rep. by

Rep. for	Origin
----------	--------

Copyright according to DIN ISO 16016	Stromlaufplan / circuit diagram SH6 H72 type B SLE3 220V Hubwerk / hoisting gear
Order No.	Serial No. xxxxxx

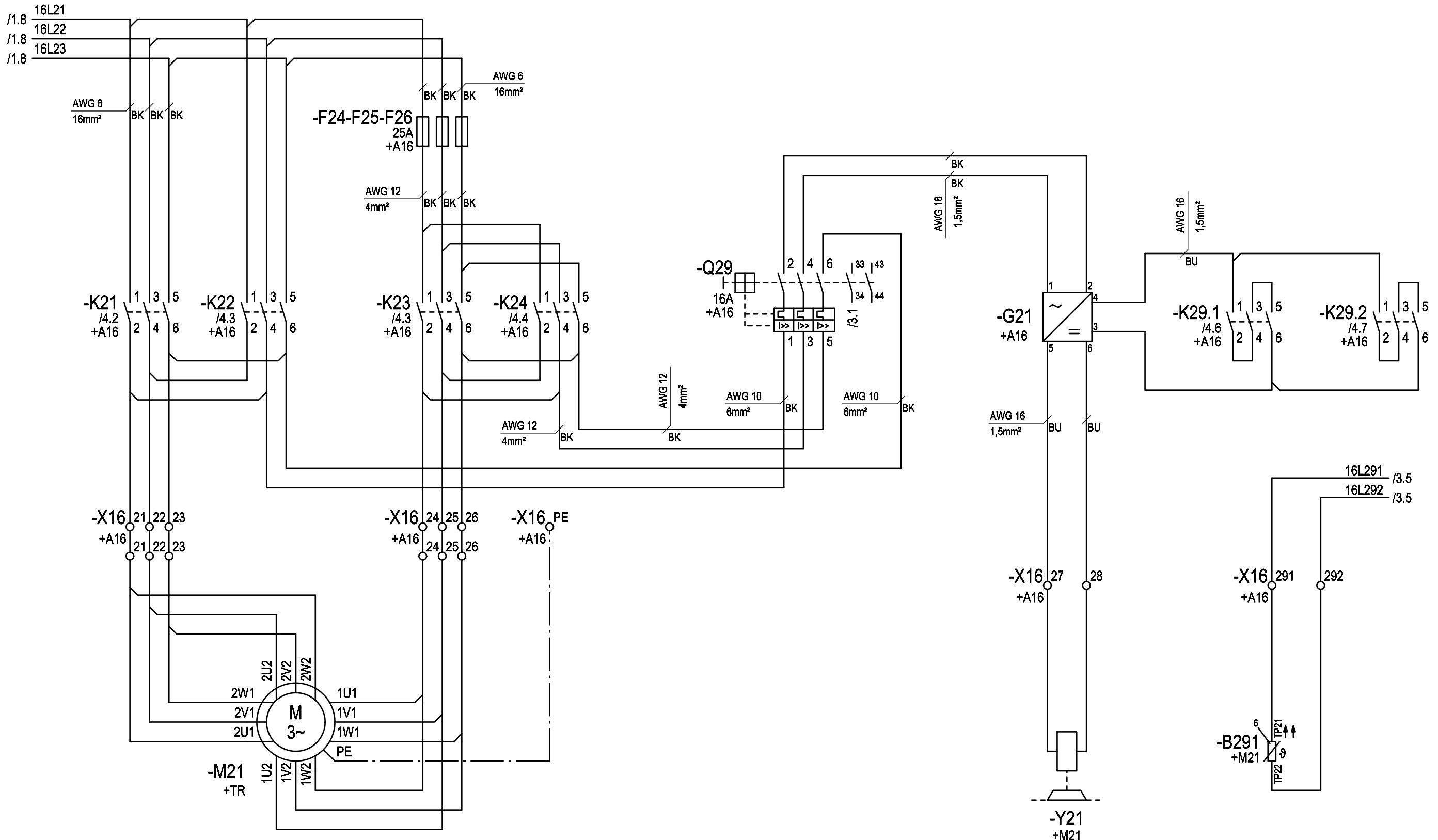
=	
+	
70012441	Page: 1
	of: 9

schnell  
fast  
rapide

Hubmotor  
hoist motor  
moteur de levage

langsam  
slow  
lent

Bremse  
brake  
frein



Changes	Date	Name	Date	Name
	07.08.18	Schnell	08.06.18	Huhnd.
			08.06.18	Schnell
			08.06.18	Huhnd.
Rev.		Plot	06.08.2018	Rep. by

Rep. for	Origin
----------	--------

Copyright according to DIN ISO 16016	Stromlaufplan / circuit diagram SH6 H72 type B SLE3 220V Hubwerk / hoisting gear
Order No.	Serial No. xxxxxx

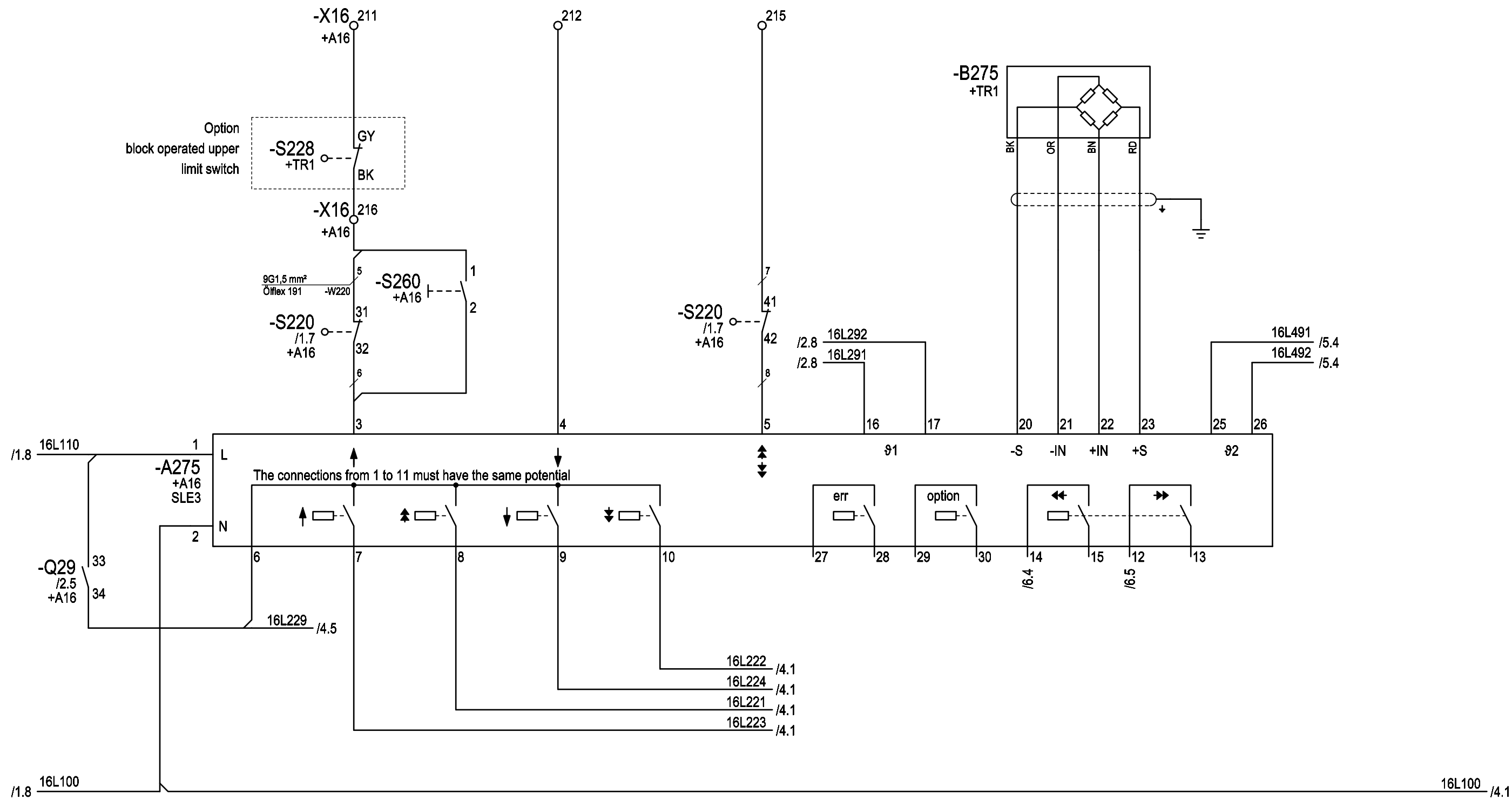
=	
+	
70012441	Page: 2 of: 9

heben  
hoisting

senken  
lowering

schnell  
fast

Temperatur- / Lastüberwachung  
temperature / load monitoring



Changes	Date	Name	Date	Name
	07.08.18	Schnell	08.06.18	Huhnd.
			08.06.18	Schnell
			08.06.18	Huhnd.
Rev.		Plot	06.08.2018	Rep. by

Rep. for	Origin
----------	--------

Copyright according to DIN ISO 16016	Stromlaufplan / circuit diagram SH6 H72 type B SLE3 220V Hubwerk / hoisting gear
Order No.	Serial No. xxxxxx

=	
+	
70012441	Page: 3
	of: 9

schnell  
fast  
rapide

langsam  
slow  
lent

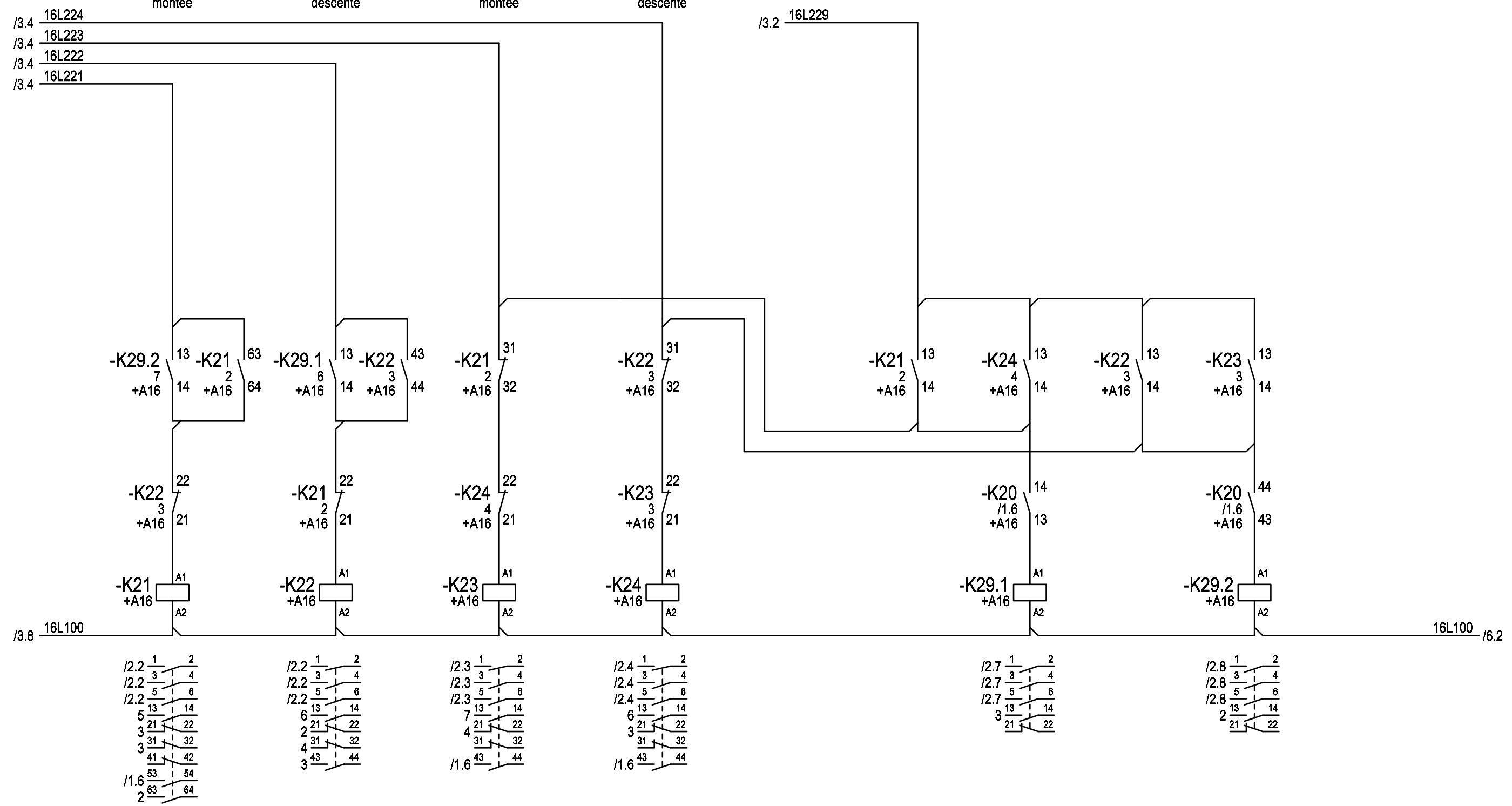
Bremsschutz  
brake contactor  
contacteur de freinage

heben  
hoisting  
montée

senken  
lowering  
descente

heben  
hoisting  
montée

senken  
lowering  
descente



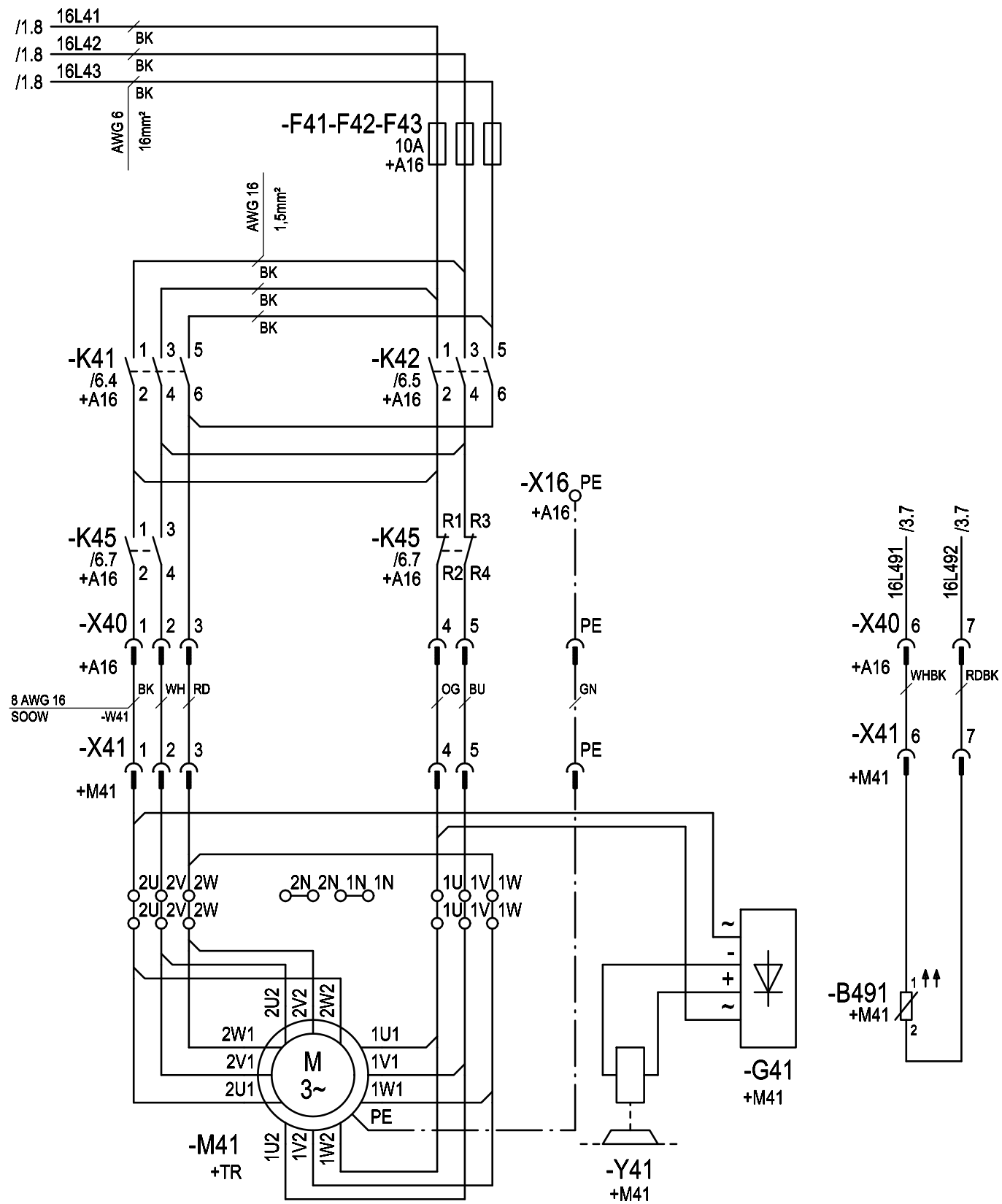
Changes	Date	Name	Date	Name
	07.08.18	Schnell	08.06.18	Huhnd.
			08.06.18	Schnell
			08.06.18	Huhnd.
Rev.		Plot	06.08.2018	Rep. by

Rep. for	Origin

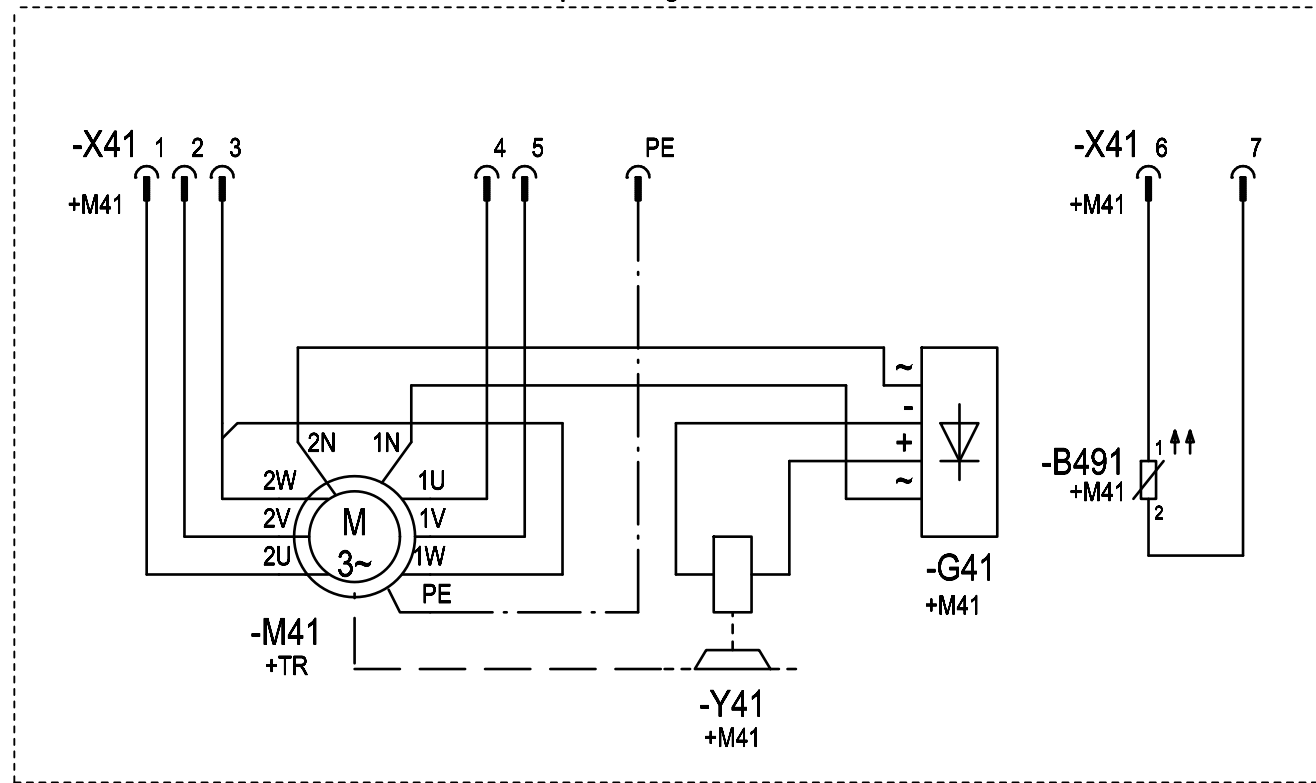
Copyright according to DIN ISO 16016	Stromlaufplan / circuit diagram SH6 H72 type B SLE3 220V Hubwerk / hoisting gear
Order No.	Serial No. xxxxxx

=	
+	
70012441	Page: 4
	of: 9

Katzfahrmotor  
cross travel motor



Note! Connection at 208V supply voltage.  
Hinweis! Anschluss bei 208V Betriebsspannung.



Changes	Date	Name	Date	Name
	07.08.18	Schnell	08.06.18	Huhnd.
			08.06.18	Schnell
			08.06.18	Huhnd.
Rev.		Plot	06.08.2018	Rep. by

Rep. for	Origin
----------	--------

Copyright according to  
DIN ISO  
16016

Stromlaufplan / circuit diagram  
SH6 H72 type B SLE3 220V  
Katzfahrwerk / travel carriage

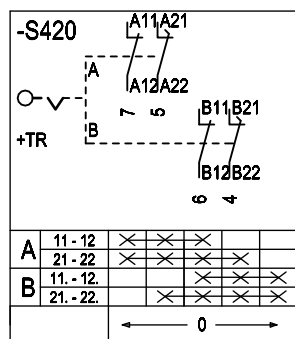
Order No. Serial No. xxxxxx

=	
+	
70012441	Page: 5
	of: 9



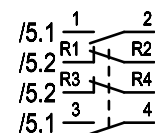
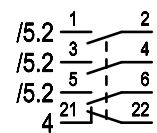
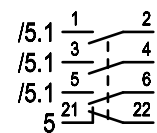
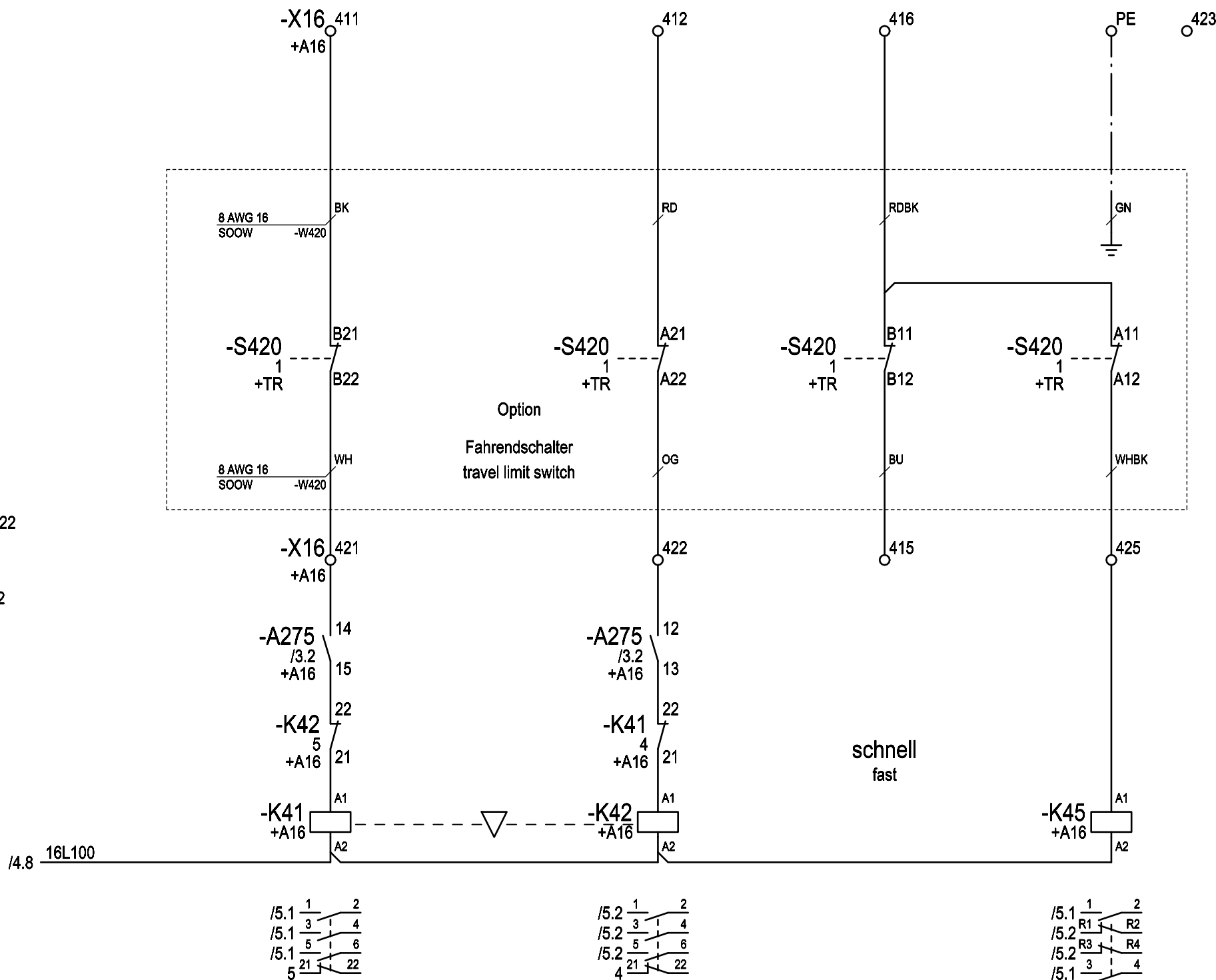
links  
left

rechts  
right



**Achtung!**

Bei Obergurtfahrwerken:  
 Kontakte A21-A22 und B21-B22  
 tauschen  
 with double-rail crab: change  
 contact A21-A22 and B21-B22



Changes	Date	Name	Date	Name
	07.08.18	Schnell	08.06.18	Huhnd.
			08.06.18	Schnell
			08.06.18	Huhnd.
Rev.		Plot	06.08.2018	Rep. by

Rep. by	Rep. for	Origin
---------	----------	--------

Copyright according to  
 DIN ISO  
 16016

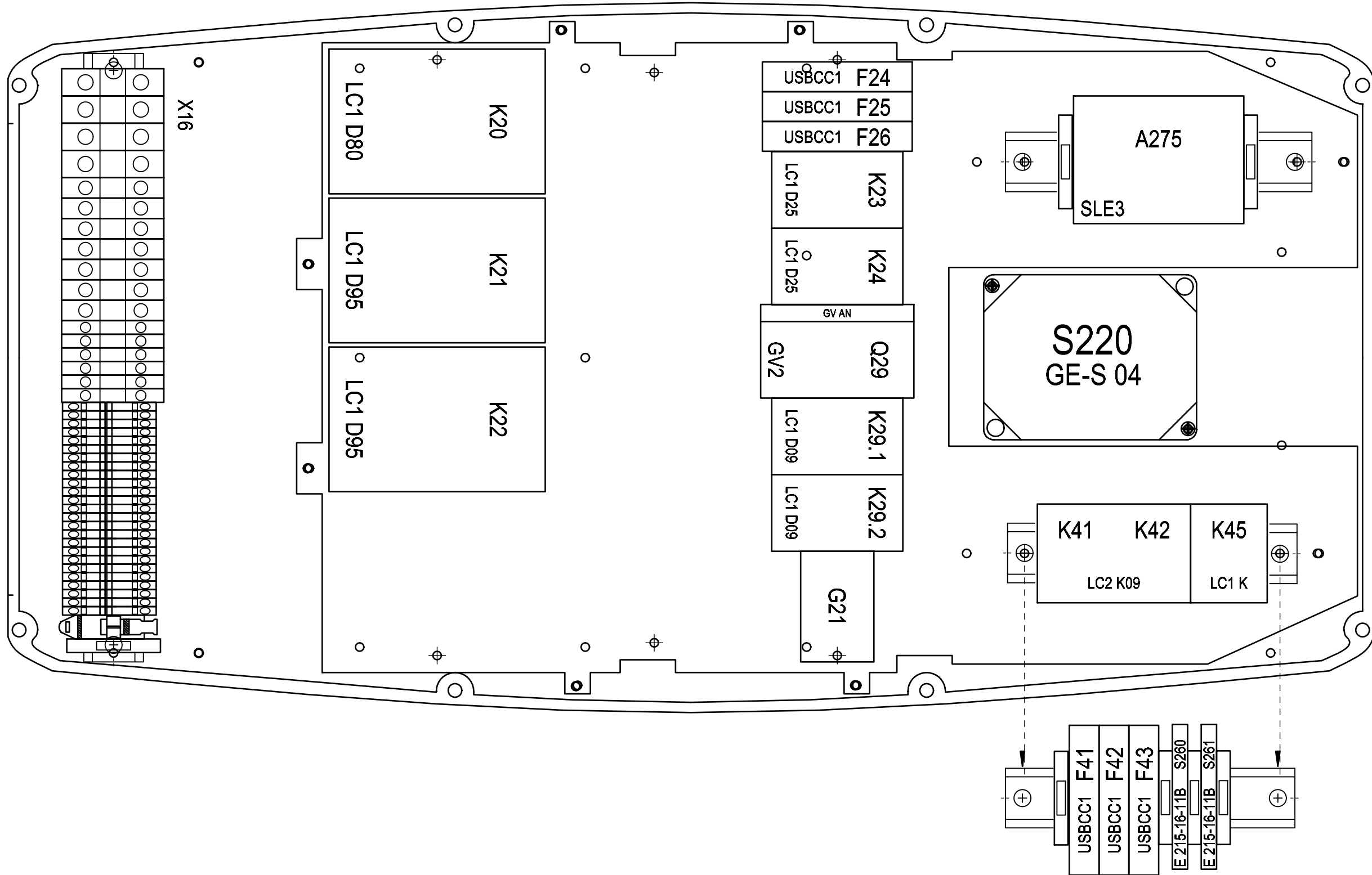
Stromlaufplan / circuit diagram  
 SH6 H72 type B SLE3 220V  
 Katzfahrwerk / travel carriage

=	
+	
70012441	Page: 6
	of: 9



# GK SH6

H72

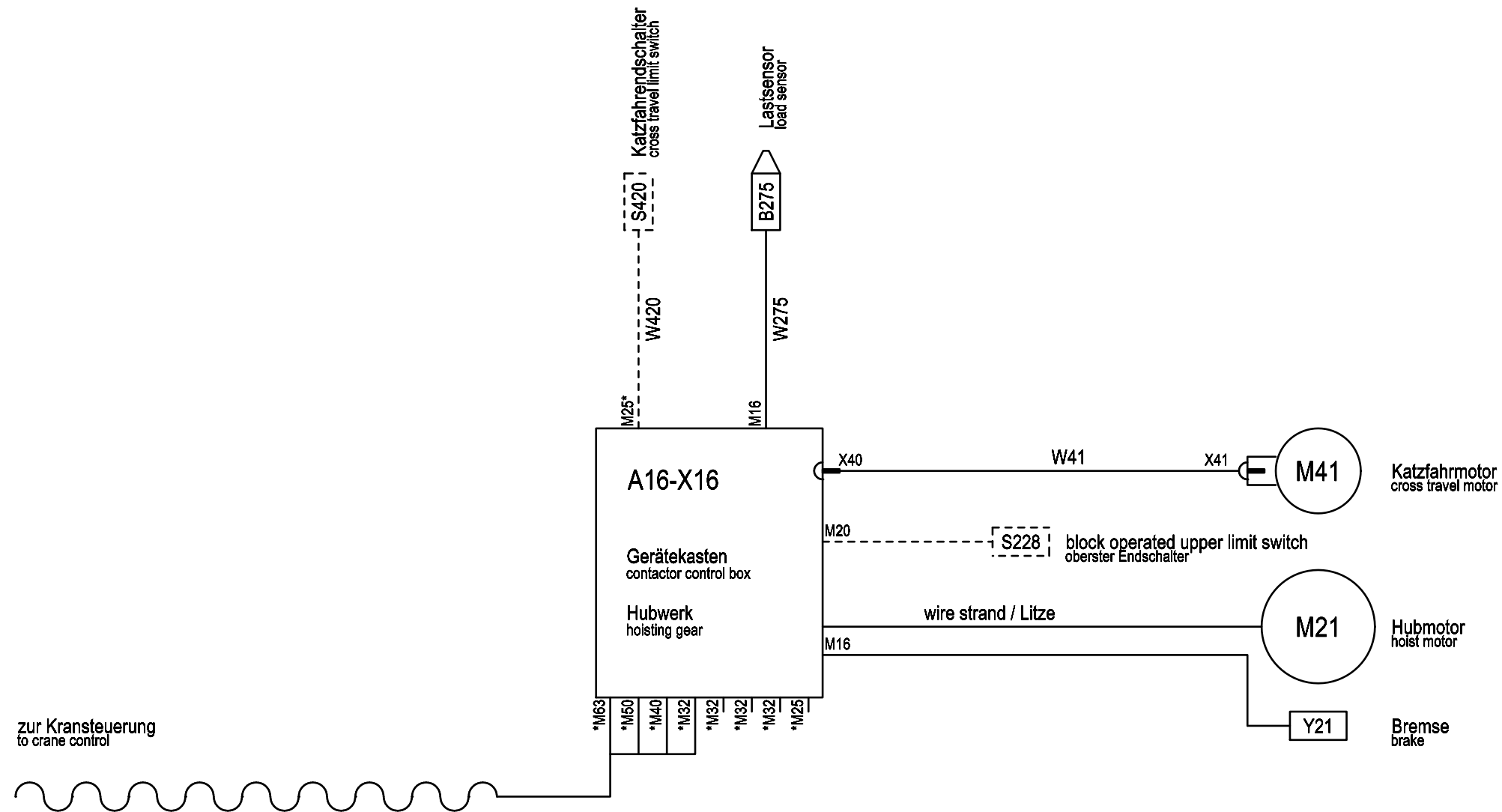


Changes	Date	Name	Date	Name
	07.08.18	Schnell	08.06.18	Huhnd.
			08.06.18	Schnell
			08.06.18	Huhnd.
Rev.		Plot	06.08.2018	Rep. by

Rep. for	Origin	Copyright according to DIN ISO 16016
----------	--------	--------------------------------------

Anordnungsplan / location diagram SH6 H72 type B SLE3 220V	
Order No.	Serial No. xxxxxx

=	
+	
70012441	Page: 8
	of: 9



\* Blindstopfen  
blind plug

Changes		Date	Name	Date	Name	Copyright according to DIN ISO 16016	Kabelplan / cable diagram SH6 H72 type B SLE3 220V	=	70012441	Page: 9
		07.08.18	Schnell	08.06.18	Huhnd.					
				08.06.18	Schnell					
				08.06.18	Huhnd.					
Rev.			Plot	06.08.2018	Rep. by	Rep. for	Origin	Order No.	Serial No. xxxxxx	of: 9