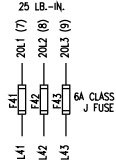
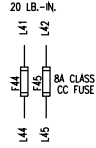


WIRE #	AWG*	DEVICE CONNECTED
20L1/7	14-BLK	F41
20L2/8	14-BLK	F42
20L3/9	14-BLK	F43
L41	14-BLK	F44, F44, U40
L42	14-BLK	F42, F45, U40
L43	14-BLK	U40
L44	14-BLK	F44, K49
L45	14-BLK	F44, K49
L49	16-RED	U40, K49, SA
L110	16-RED	X20.3-110
411	18-RED	X20.6-411
L421	18-RED	X20.6-421
412	18-RED	X20.6-412
L415	18-RED	X20.6-415
L422	18-RED	X20.6-422
L423	18-RED	X20.6-423
L426	18-RED	X20.6-426
L427	16-RED	X20.6-427
L100	16-WHT	K49, SA, U40
L491	14-BLU	X20.6-491
L492	14-BLU	X20.6-492
L494	14-BLU	U40
R40.1	14-BLK	U40
R40.2	14-BLK	U40
L47	14-BLK	X20.5-47
L48	14-BLK	X20.5-48
U41	14-BLK	K49, G41
V41	14-BLK	M41, U40
W41	14-BLK	M41, U40
W41	14-BLK	M41, U40

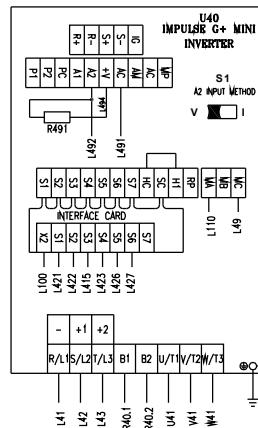
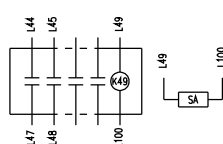
TIGHTENING TORQUE
25 LB.-IN.



TIGHTENING TORQUE
20 LB.-IN.

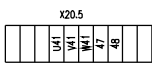


TIGHTENING TORQUE 7 LB.-IN.

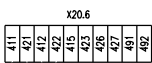


POWER TERMINALS TIGHTENING TORQUE 10.6-13.3 LB.-IN.
INTERFACE CARD TERMINAL TIGHTENING TORQUE 1.1-2.2 LB.-IN.

TIGHTENING TORQUE 12 LB.-IN.



TIGHTENING TORQUE 12 LB.-IN.



14 AWG WIRE
USE 75°C (167°F)
CONDUCTORS

* REMOVE TERMINAL BOARD JUMPER
WHEN TRAVEL LIMIT S420 IS PROVIDED

SYMBOL DESIGNATIONS

- U40 - INVERTER
- R40 - DYNAMIC BRANING RESISTOR
- F44 - BRAKE CIRCUIT FUSE
- F45 - BRAKE CIRCUIT FUSE
- K49 - BRAKE RELAY
- G41 - BRAKE RECTIFIER
- R491 - PTC BRANCH RESISTOR
- B491 - PTC THERMISTOR
- S420 - TRAVEL LIMITS
- SA - SURGE ABSORBER
- X20 - TERMINAL BLOCKS

WARNING:

THIS EQUIPMENT MUST BE EFFECTIVELY GROUNDED
ACCORDING TO APPLICABLE CODES.

AVERTISSEMENT:

CET EQUIPEMENT DOIT ETRE MIS A LA TERRE EN
ACCORDANCE AVEC LES NORMES EN VIGUEUR.

UL508A NOTES:

* WIRE AWG IN THIS COLUMN APPLIES TO WIRING
INTERNAL TO HOST CONTROL PANEL.
FIELD WIRING REQUIREMENTS ARE SHOWN BELOW
APPROPRIATE TERMINAL BOARD.

TO MAINTAIN ENCLOSURE TYPE 4, TYPE 12 RATING
OF THE ENCLOSURE, USE CORD-GRIPS AND SEALING
FITTINGS WITH A TYPE 4 AND TYPE 12 RATING.

ALL PANEL COMPONENTS MUST BE LABELED TO MATCH
SCHEMATIC WIRING DIAGRAM DESIGNATIONS.

USE COPPER CONDUCTORS ONLY FOR ALL FIELD TERMINALS.
SINGLE TERMINAL GROUND LUG PROVIDED FOR SUPPLY
GROUNDING CONDUCTOR ONLY. DO NOT USE FOR PANEL WIRING.

LABEL FUSE BASES WITH FUSE SYMBOL
AND SIZE IN AMPERES USING A PRINTED LABEL.

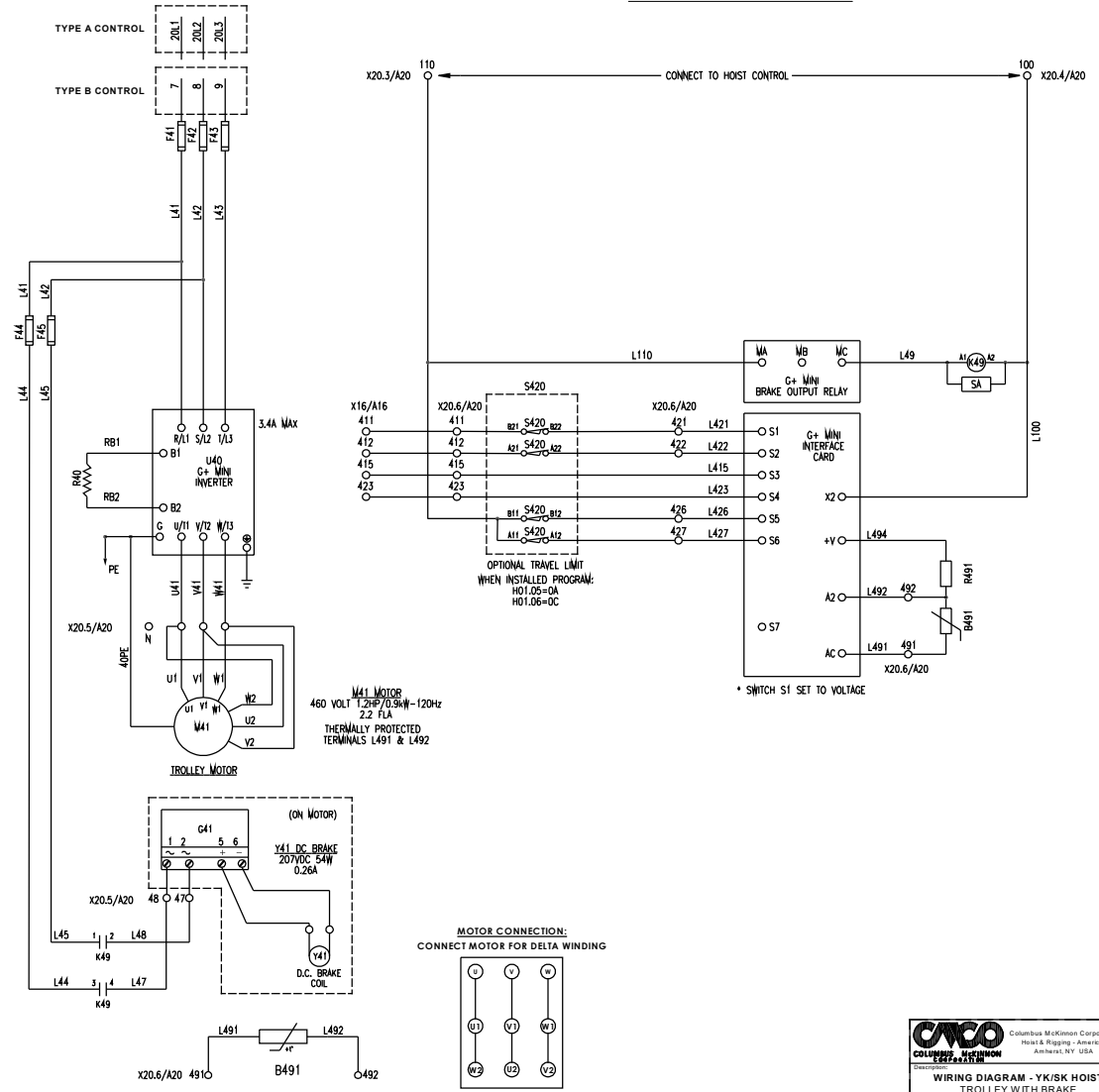
ADJACENT TO TRANSFORMER LABEL FUSE SYMBOL AND AMPACITY.

LABEL TERMINAL BLOCKS WITH ALPHANUMERIC CODE
AS SHOWN ON WIRING DIGRAM USING PERMANENT MARKER.

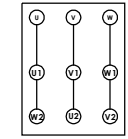
NOTE: THIS WIRING DIAGRAM SHOWS WIRING FOR
3 SPEED CONTROL. PROGRAMMING OF THE
INVERTER CAN CHANGE THE CONTROL METHOD TO
2-STEP, 3-STEP, 2-STEP INFINITELY VARIABLE,
OR 3-STEP INFINITELY VARIABLE.

FIRST USED ON: PROJECT ONE

ELEMENTARY DIAGRAM



MOTOR CONNECTION:
CONNECT MOTOR FOR DELTA WINDING



**WIRING DIAGRAM - YK/SK HOIST
TROLLEY WITH BRAKE
G+MINI VFD
A20 PANEL- UL508A**

REV	DATE	DESCRIPTION	BY	CHKD	DATE	REV	DATE	DESCRIPTION	BY	CHKD
101106	AC	ADDED UL508A DATA	12/11/2018	R18	Drawn	02/22/2018	R18			
1021105	AS	ADDED S1 SETTING	10/23/2018	R18	Approved					
1021106	BA	PRINTED RELEASE	10/23/2018	R18	Original Author			Worksheet		
ECN	REV	Description of change	Date	By	Digital Scale	NONE				

D 45656201