



UNIFIED INDUSTRIES

A Columbus McKinnon Brand

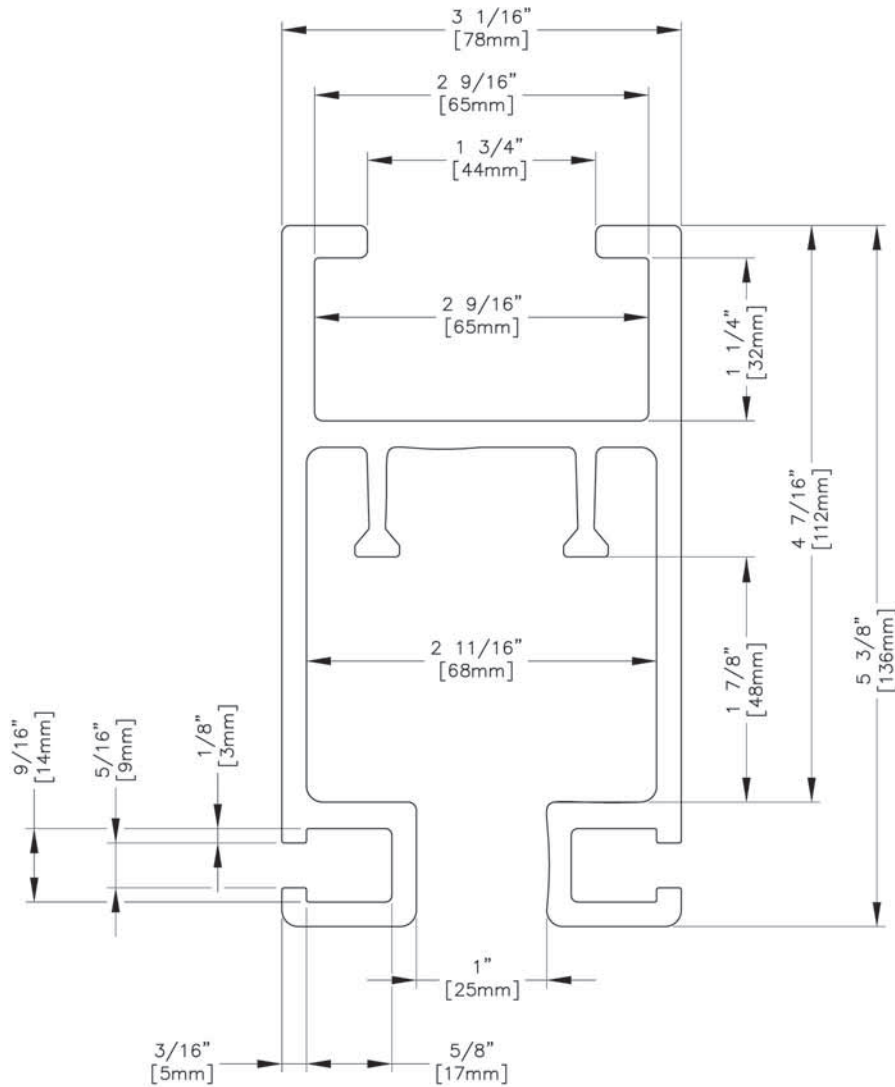
ETA-5 RAIL SYSTEMS





	PAGE
ETA-5 Rail Profiles.....	2-4
ETA-5 Rail Load Charts.....	5-6
ETA-4 & ETA-5 Hangers.....	7-10
ETA-5 Inspection Gate	11
ETA-4 & ETA-5 Load Trolleys.....	12-15
ETA-4 & ETA-5 Festoon Trolley.....	16-19
ETA-4 & ETA-5 Bumper Trolley.....	20
ETA-5 End Trucks.....	21-34
ETA-5 Bridges.....	35-39
ETA-5 Jib Cranes.....	40-41
ETA-5 Telescope.....	42-43
ETA-5 Floor Supports.....	44
ETA-5 Stop Assemblies.....	45-46
ETA-5 Rail Splice.....	47
Unified Air Festooning.....	48-51
ETA-5 Switch Bracket Assembly/By-Pass Assembly.....	52
ETA-5 Drop Angle Kits.....	53-55
Air Tractor.....	56
Air Balancer.....	57-58
Caution Statement.....	59

***All dimensions are reference only
and need to be verified with factory.**



**ETA-5 RAIL PROFILE
(87025)**

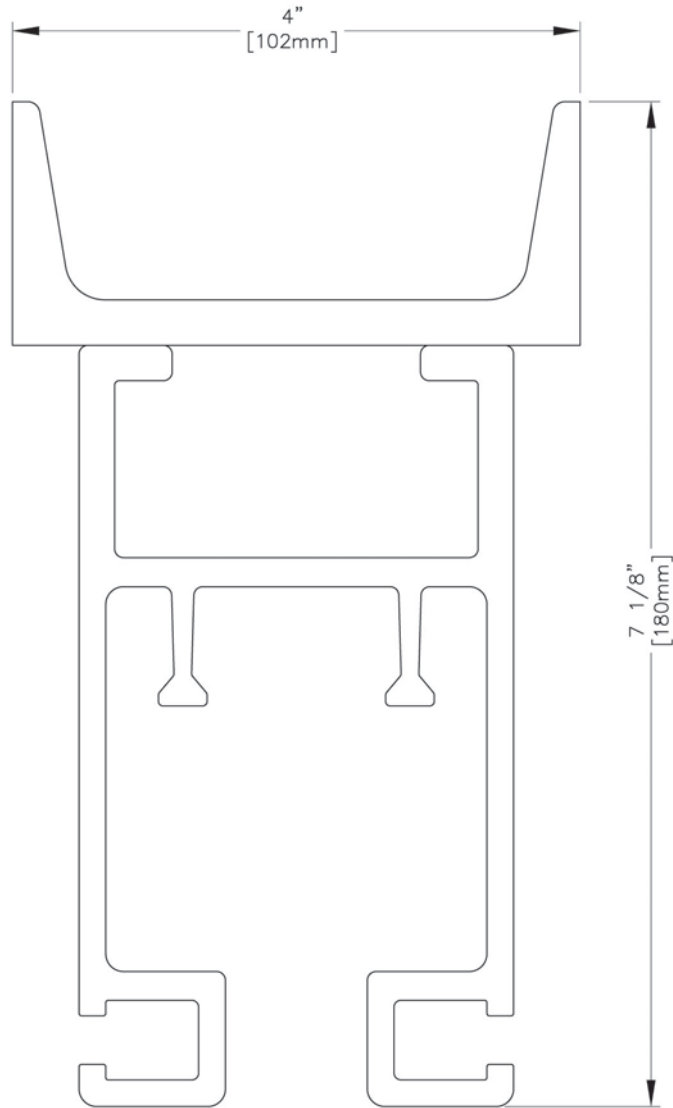
Part Number:

ETA5RW 08

Length of Rail in Feet (08 = 8 Feet)

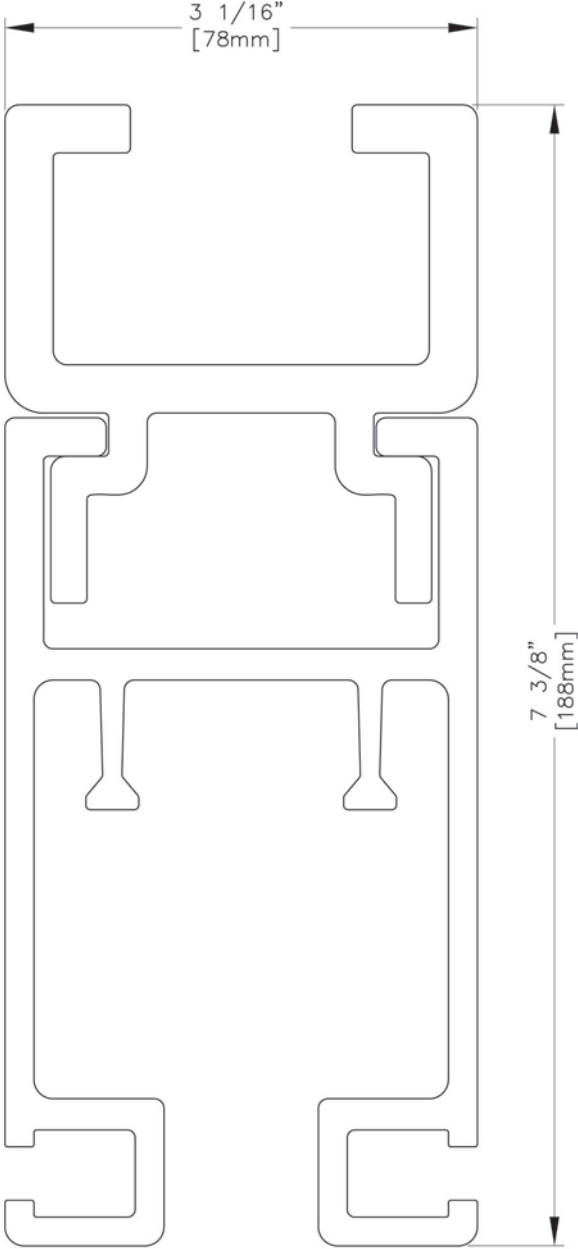
Rail Profile

- All Runways are Drilled for End Stops and Splice Holes.
- Round up to the nearest foot (Cut to 8'-6" = ETA5RW09)
- Maximum Length: 42'-0" (12.8m)
- Weight: 4.67lbs./ft. (6.95kg/m)
- Standard color Unified Safety Yellow
- Other Colors Specify when Ordering



ETA-5 RAIL WITH C4 X 2.5 CHANNEL CAP PROFILE

- Weight: 7.18lbs./ft. (10.69kg/m)

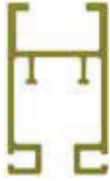


ETA-5 RAIL WITH ETA STRONG BACK PROFILE

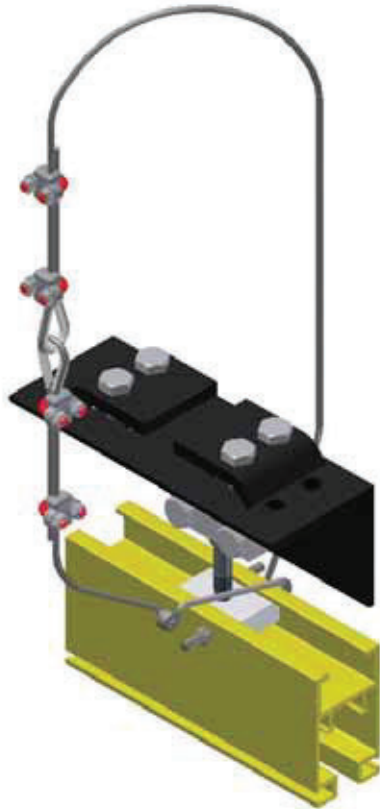
- Weight: 8.25lbs./ft. (12.27kg/m)



Span Ft. (in)	Deflection Limit (in.) L/450	Point Load @ Center of Span (lbs)		
		ETA-5 L/450	ETA-5 + CHANNEL CAP L/450	ETA-5 + ETA STRONGBACK L/450
5 (60)	.1333	3376	4000	4000
6 (72)	.1600	2344	4000	4000
7 (84)	.1867	1722	3887	4000
8 (96)	.2133	1319	2976	3674
9 (108)	.2400	1042	2352	2903
10 (120)	.2667	844	1905	2351
11 (132)	.2933	697	1574	1943
12 (144)	.3200	586	1323	1633
13 (156)	.3467	499	1127	1391
14 (168)	.3733	431	972	1200
15 (180)	.4000	375	847	1045
16 (192)	.4267	330	744	919
17 (204)	.4533	292	659	814
18 (216)	.4800	260	588	726
19 (228)	.5067	234	528	651
20 (240)	.5333	211	476	588
21 (252)	.5600	191	432	533
22 (264)	.5867	174	394	486
23 (276)	.6133	160	360	445
24 (288)	.6400	147	331	408
25 (300)	.6667	135	305	376
26 (312)	.6933	125	282	348
27 (324)	.7200	116	261	323
28 (336)	.7467	108	243	300
29 (348)	.7733	100	226	280
30 (360)	.8000	94	212	261
31 (372)	.8267	88	198	245
32 (384)	.8533	82	186	230
33 (396)	.8800	77	175	216
34 (408)	.9067	73	165	203
35 (420)	.9333	69	155	192
36 (432)	.9600	65	147	181
37 (444)	.9867	62	139	172
38 (456)	1.013	58	132	163
39 (468)	1.040	55	125	155
40 (480)	1.067	53	119	147



Span M (mm)	Deflection Limit (mm)	Point Load @ Center of Span (kg)		
		ETA-5	ETA-5 + CHANNEL CAP	ETA-5 + ETA STRONGBACK
		L/450	L/450	L/450
1.50 (1500)	3.3	1581	1814	1814
1.75 (1750)	3.9	1161	1814	1814
2.00 (2000)	4.4	889	1814	1814
2.25 (2250)	5.0	702	1586	1814
2.50 (2500)	5.6	569	1284	1585
2.75 (2750)	6.1	470	1061	1310
3.00 (3000)	6.7	395	892	1101
3.25 (3250)	7.2	337	760	938
3.50 (3500)	7.8	290	655	809
3.75 (3750)	8.3	253	571	705
4.00 (4000)	8.9	222	502	619
4.25 (4250)	9.4	197	444	549
4.50 (4500)	10.0	176	396	489
4.75 (4750)	10.6	158	356	439
5.00 (5000)	11.1	142	321	396
5.25 (5250)	11.7	129	291	360
5.50 (5500)	12.2	118	265	328
5.75 (5750)	12.8	108	243	300
6.00 (6000)	13.3	99	223	275
6.25 (6250)	13.9	91	205	254
6.50 (6500)	14.4	84	190	235
6.75 (6750)	15.0	78	176	217
7.00 (7000)	15.6	73	164	202
7.25 (7250)	16.1	68	153	189
7.50 (7500)	16.7	63	143	176
7.75 (7750)	17.2	59	134	165
8.00 (8000)	17.8	56	125	155
8.25 (8250)	18.3	52	118	146
8.50 (8500)	18.9	49	111	137
8.75 (8750)	19.4	46	105	129
9.00 (9000)	20.0	44	99	122
9.25 (9250)	20.6	42	94	116
9.50 (9500)	21.1	39	89	110
9.75 (9750)	21.7	37	84	104
10.00 (10000)	22.2	36	80	99
10.25 (10250)	22.8	34	76	94
10.50 (10500)	23.3	32	73	90
10.75 (10750)	23.9	31	69	86
11.00 (11000)	24.4	29	66	82
11.25 (11250)	25.0	28	63	78
11.50 (11500)	25.6	27	61	75
11.75 (11750)	26.1	26	58	72
12.00 (12000)	26.7	25	56	69
12.25 (12500)	27.2	24	53	66



CLOSED ADJUSTABLE HANGER
25473 FOR BEAMS 2.33" (59mm)
TO 3.33" (85mm) wide
25474 FOR BEAMS 4" (102mm)
TO 8" (203mm) wide



25467 ADJUSTABLE BLOCK HANGER
Allows for 2" (50mm) of vertical
adjustment in the field

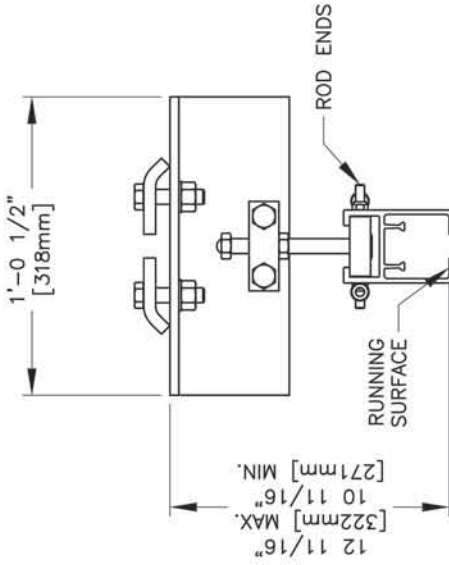


25286 BLOCK HANGER

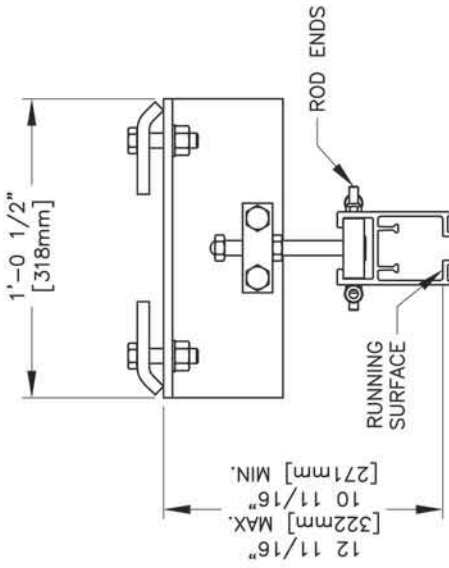
- **All hangers must be bolted through rail.**
- **All hangers include a 6'-0" (1.82m) safety cable 78287.**

*Grip range 1/4" (6mm) to 9/16" (15mm) thick flange.

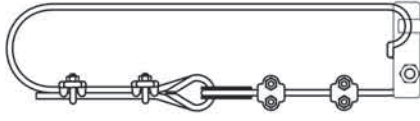
**Adjustable Hangers recommended for Light Duty Use Only. These hangers should not be used in applications that include: telescopes, cantilevered loads, shock loading, tractors.



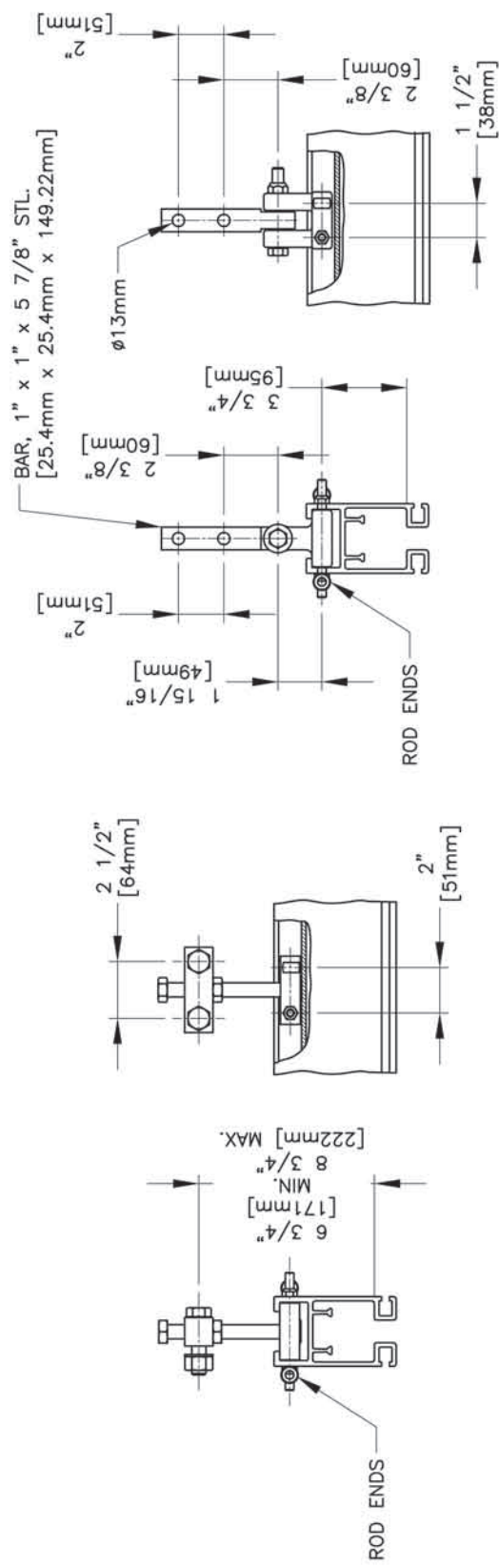
25473 CLOSED ADJUSTABLE HANGER
FOR BEAMS 2.33" [59mm] TO 3.33" [85mm] WIDE
RATED LOAD 1500 LBS. [680 Kg.]
WEIGHT 22 LBS. [9.98 Kg.]



25474 CLOSED ADJUSTABLE HANGER
FOR BEAMS 4" [102mm] TO 8" [203mm] WIDE
RATED LOAD 1500 LBS. [680 Kg.]
WEIGHT 23 LBS. [10.43 Kg.]

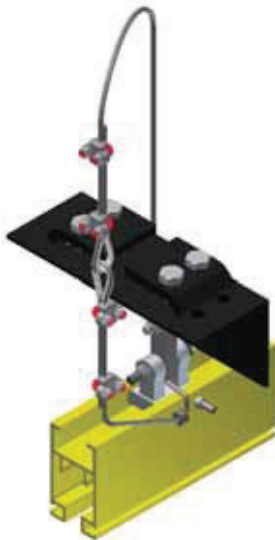


SAFETY CABLE ASSEMBLY VIEW
ALL HANGERS COME WITH A SAFETY CABLE 78287



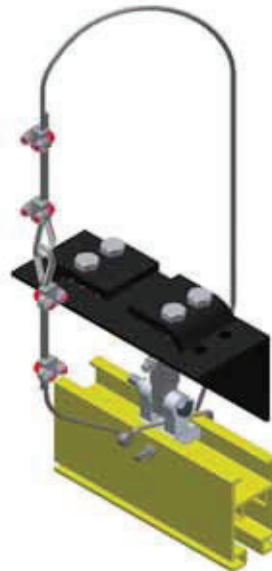
25467 ADJUSTABLE BLOCK HANGER
RATED LOAD 1500 LBS. [680 Kg.]
WEIGHT 6 LBS. [2.72 Kg.]

25286 BLOCK HANGER
RATED LOAD 2000 lbs. [907 Kg.]
WEIGHT 4 LBS. [1.81 Kg.]



BEAM HANGER*
PARALLEL MOUNT

27055 FOR BEAMS 2.33" (59mm) TO 3.33" (85mm)
27057 FOR BEAMS 4" (102mm) TO 8" (203mm)

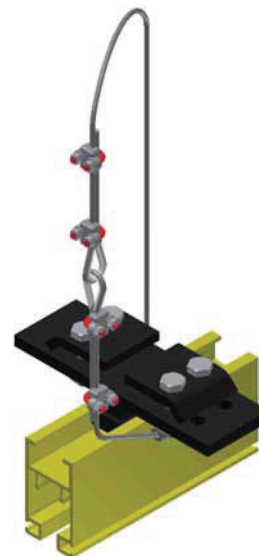


BEAM HANGER*
PERPENDICULAR MOUNT

27055 FOR BEAMS 2.33" (59mm) TO 3.33" (85mm)
27057 FOR BEAMS 4" (102mm) TO 8" (203mm)



27070 ETA RIGID MOUNT HANGER**



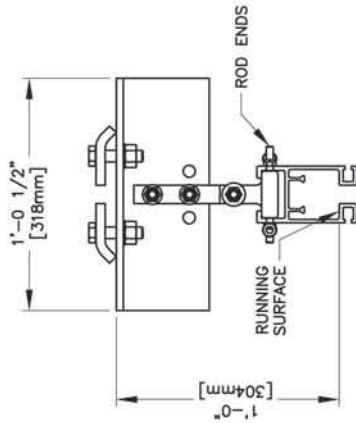
RIGID MOUNT HANGER*
PARALLEL MOUNT

27073 FOR BEAMS 2.33" (59mm) TO 3.33" (85mm)
27071 FOR BEAMS 4" (102mm) TO 8" (203mm)

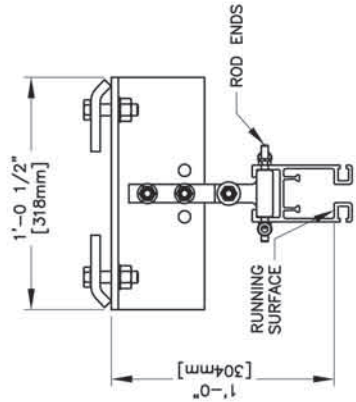
- **All hangers must be bolted through rail.**
- **All hangers include a 6'-0" (1.82m) safety cable 78287.**

*Grip range 1/4" (6mm) to 9/16" (15mm) thick flange.

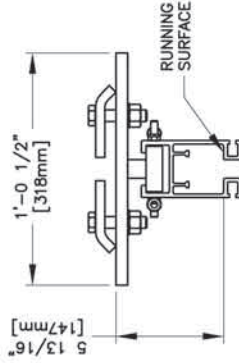
**For use on W-Shape beams only.



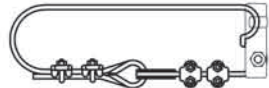
27055 BEAM HANGER PARALLEL MOUNT
FOR BEAMS 2.33" [59mm] TO 3.33" [85mm] WIDE
RATED LOAD 2000 lbs. [907 Kg.]
WEIGHT 23 lbs. [10.43 Kg.]



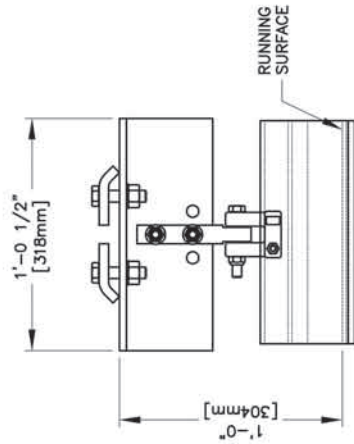
27057 BEAM HANGER PARALLEL MOUNT
FOR BEAMS 4" [102mm] TO 8" [203mm] WIDE
RATED LOAD 2000 lbs. [907 Kg.]
WEIGHT 24 lbs. [10.89 Kg.]



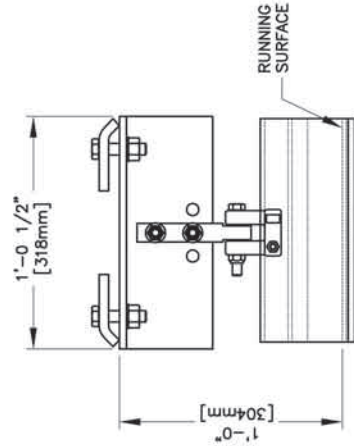
27071 PARALLEL RIGID MOUNT HANGER
FOR BEAMS 4" [102mm] TO 8" [203mm] WIDE
RATED LOAD 2000 lbs. [907 Kg.]
WEIGHT 18 lbs. [8.16 Kg.]



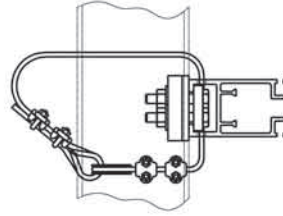
SAFETY CABLE ASSEMBLY VIEW
ALL HANGERS COME WITH A SAFETY CABLE 78287



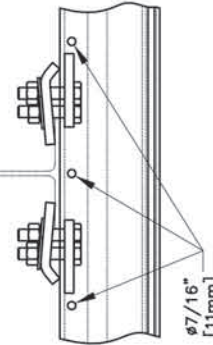
27055 BEAM HANGER PERPENDICULAR MOUNT
FOR BEAMS 2.33" [59mm] TO 3.33" [85mm] WIDE
RATED LOAD 2000 lbs. [907 Kg.]
WEIGHT 23 lbs. [10.43 Kg.]

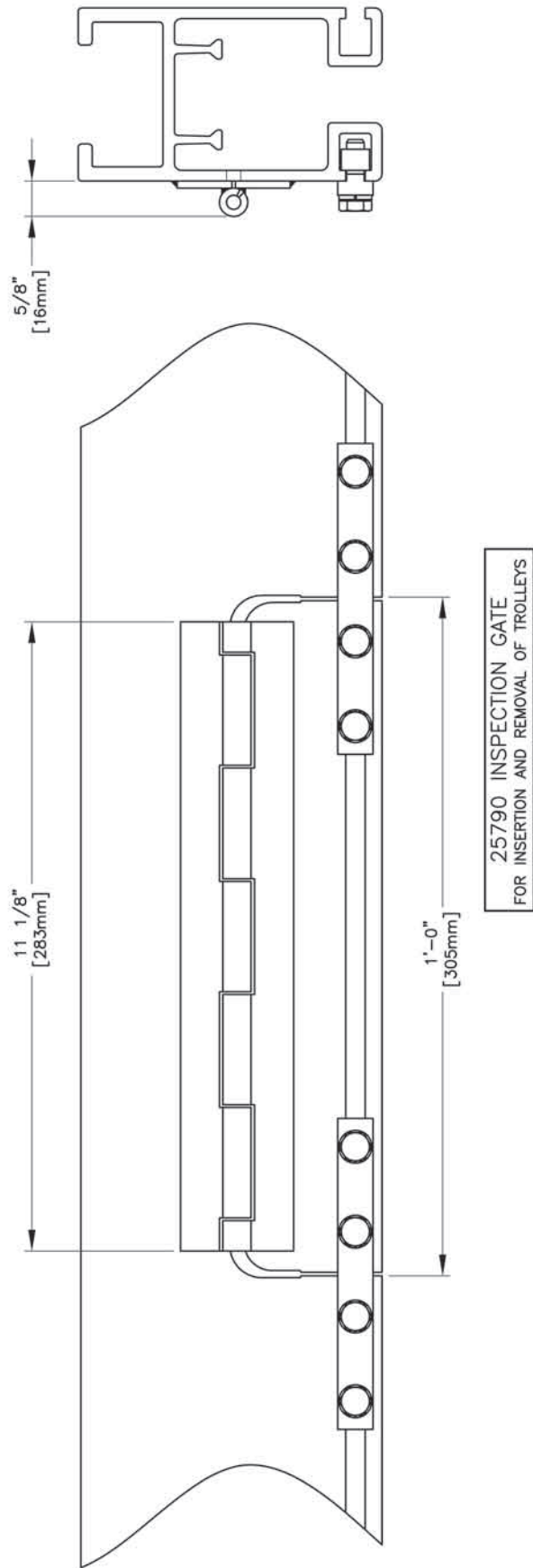


27057 BEAM HANGER PERPENDICULAR MOUNT
FOR BEAMS 4" [102mm] TO 8" [203mm] WIDE
RATED LOAD 2000 lbs. [907 Kg.]
WEIGHT 24 lbs. [10.89 Kg.]



27070 ETA RIGID MOUNT HANGER
SAFETY CABLE RATED LOAD 3500 LBS. [1588 Kg.]
HOLE OPTIONS WEIGHT 10 LBS. [4.54 Kg.]





Inspection Gate must be 1'-0" (304.8mm) from a hanger.



UNIFIED ETA-4 & ETA-5 RAIL TROLLEYS



20100



20110



20115



28070



20130



20125



20116



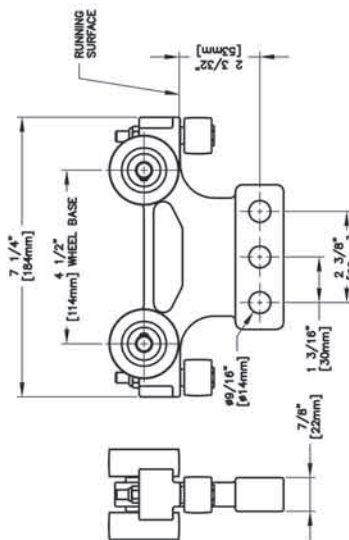
20117

Part Number

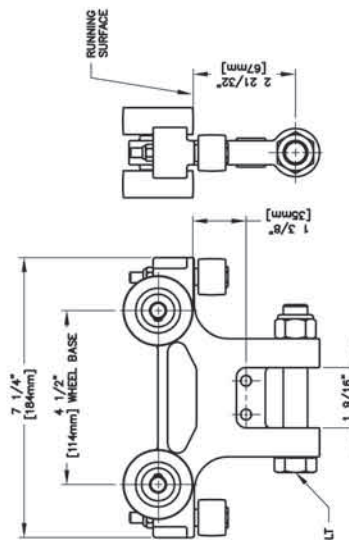
- **20100** ETA-4/5 Short Body Load Trolley with 550 lb (250kg) Rated Load
- **20110** ETA-4/5 Long Body Load Trolley with 550 lb (250kg) Rated Load
- **20115** ETA-4/5 Three Hole Mount Load Trolley with 550 lb (250kg) Rated Load
- **28070** ETA-4/5 Unified Balancer Trolley with 550 lb (250kg) Rated Load
- **20130** ETA-4/5 Single Hoist Trolley with 550 lb (250kg) Rated Load
- **20125** ETA-4/5 Pin Mount Trolley with 550 lb (250kg) Rated Load
- **20116** ETA-4/5 IR 6" Balancer Trolley with 550 lb (250kg) Rated Load
- **20117** ETA-4/5 IR 10" Balancer Trolley with 550 lb (250kg) Rated Load

Features

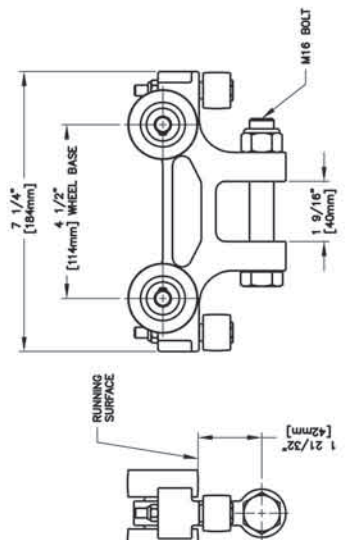
- High tensile almag alloy frame
- 1.8"(46mm) Nylon glass reinforced wheels, with permanently sealed precision ball bearings
- High impact nylon guide rollers with dual race ball bearings for smooth, quiet operation
- Operates within enclosed rail free from obstructing material
- Dielectrically insulated
- Low inertia: less than 1% of load
- Operating temperature range: +32 degrees to +212 degrees F (0 degrees to +100 degrees C)



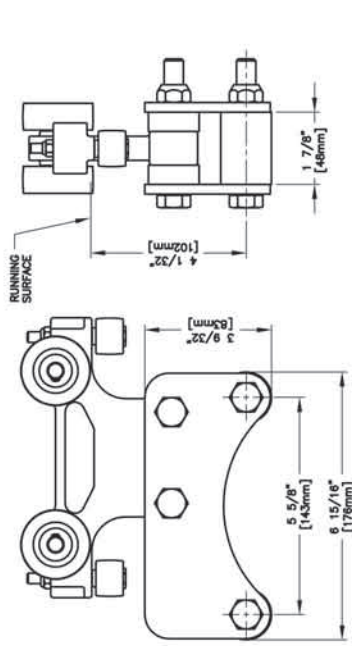
20115 ETA-4/5 THREE HOLE MOUNT LOAD TROLLEY



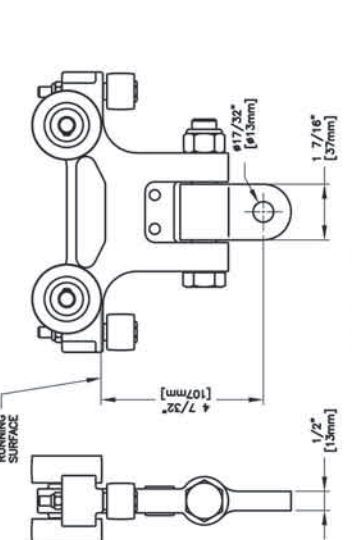
20110 ETA-4/5 LONG BODY LOAD TROLLEY



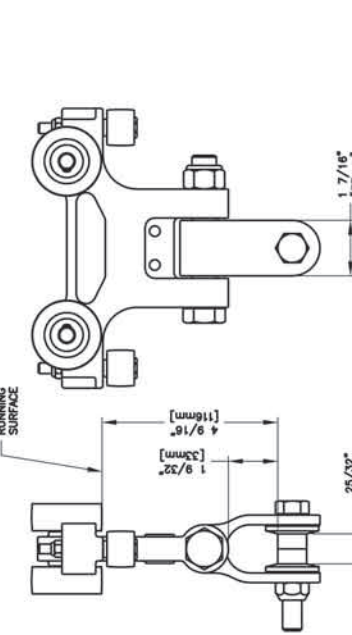
20100 ETA-4/5 SHORT BODY LOAD TROLLEY



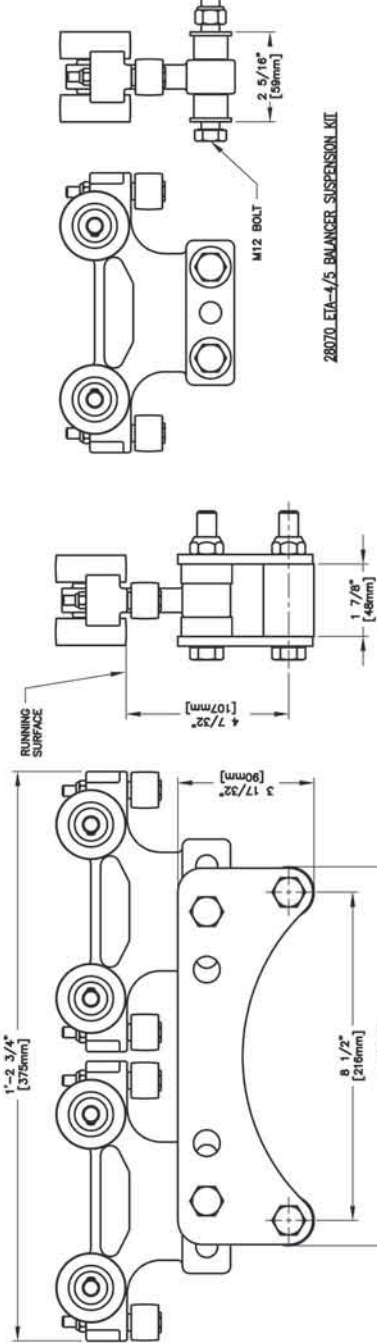
20116 ETA-4/5 IR. 6\"/>



20125 ETA-4/5 PIN MOUNT TROLLEY



20130 ETA-4/5 SINGLE HOIST TROLLEY



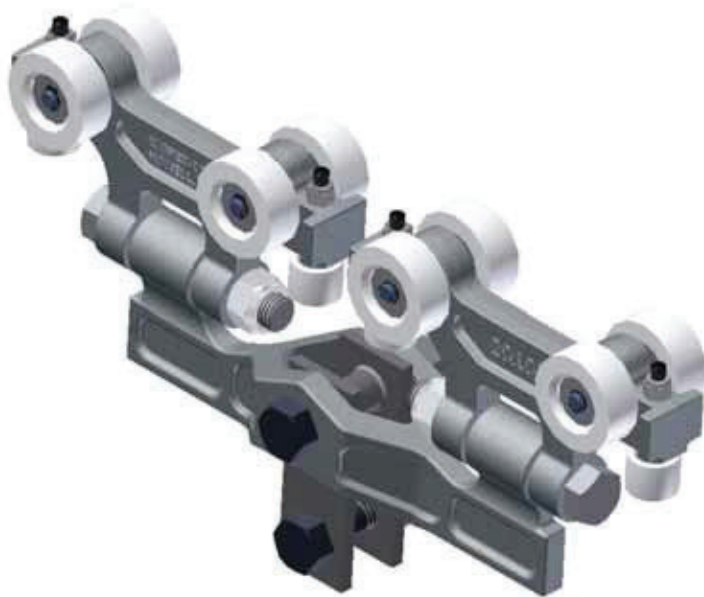
20117 ETA-4/5 IR. 10\"/>

SPECIFICATIONS		RATED LOAD	
WEIGHT OF 20100:	2.15 lbs. [.98 Kg.]	550 lbs. [250 Kg.]	
WEIGHT OF 20110:	2.23 lbs. [1.01 Kg.]	550 lbs. [250 Kg.]	
WEIGHT OF 20115:	2.00 lbs. [.91 Kg.]	550 lbs. [250 Kg.]	
WEIGHT OF 20130:	2.92 lbs. [1.32 Kg.]	550 lbs. [250 Kg.]	
WEIGHT OF 20125:	2.45 lbs. [1.11 Kg.]	550 lbs. [250 Kg.]	
WEIGHT OF 20116:	7.08 lbs. [3.20 Kg.]	550 lbs. [250 Kg.]	
WEIGHT OF 20117:	9.80 lbs. [4.45 Kg.]	1100 lbs. [500 Kg.]	
WEIGHT OF 28070:	2.10 lbs. [.95 Kg.]	550 lbs. [250 Kg.]	
BODY : HIGH TENSILE ALUMG			
WHEELS : 1.825 DIA. 146-4mm DIA. GLASS REINFORCED NYLON			
BEARINGS : BALL PERMANENTLY LUBRICATED STUDS : .50 DIA. [12.7mm DIA.]			
GUIDE ROLLERS : .94 DIA. [23.9mm DIA.] HIGH IMPACT NYLON			

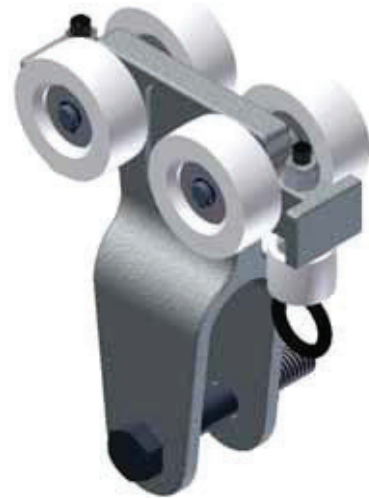
28070 ETA-4/5 BALANCER SUSPENSION KIT



UNIFIED ETA-4 & ETA-5 RAIL TROLLEYS



25330



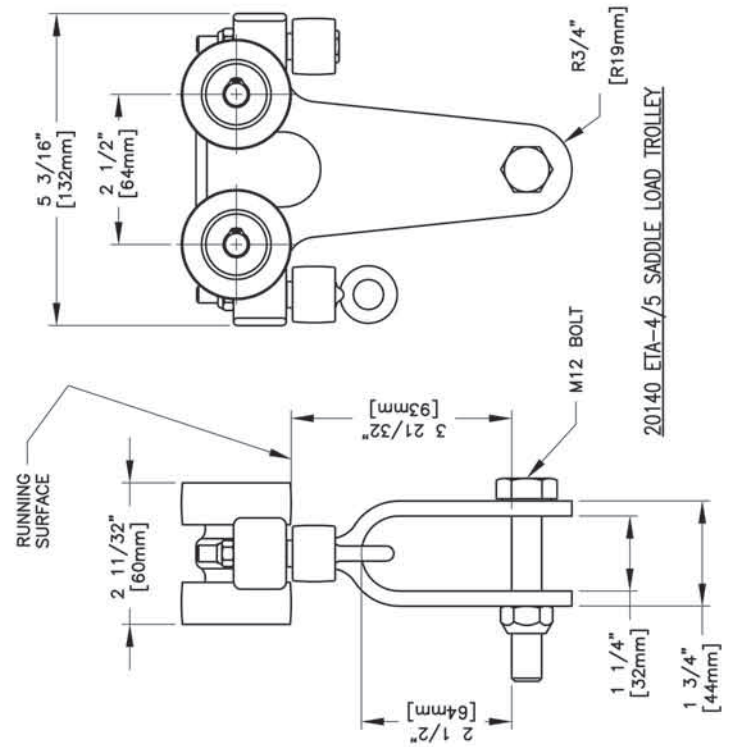
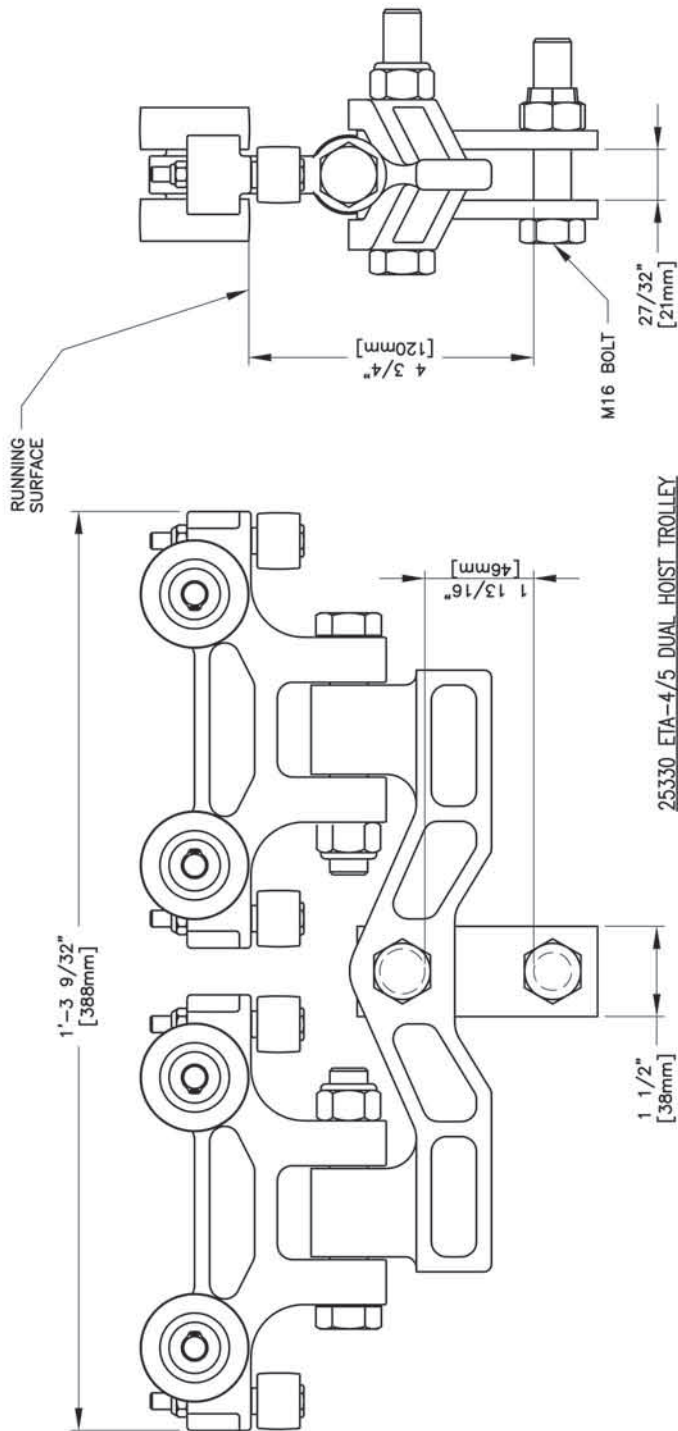
20140

Part Number

- **25330** ETA-4/5 Dual Hoist Trolley with 1100 lb (500kg) Rated Load
- **20140** ETA-4/5 Saddle Load Trolley with 550 lb (250kg) Rated Load

Features

- High tensile almag alloy frame
- 1.8" (46mm) Nylon glass reinforced wheels, with permanently sealed precision ball bearings
- High-impact nylon guide rollers with smooth, quiet operation
- Operates within enclosed rail free from obstructing material
- Dielectrically insulated
- Low inertia: less than 1% of load
- Operating temperature range: +32 degrees to +212 degrees F (0 degrees to +100 degrees C)



SPECIFICATIONS		RATED LOAD	
WEIGHT OF 25330:	7.08 lbs. [3.21 Kg.]	1100 lbs. [500 Kg.]	
WEIGHT OF 20140:	1.83 lbs. [.83 Kg.]	550 lbs. [250 Kg.]	
BODY :	HIGH TENSILE ALMAG		
WHEELS :	1.825 DIA. [46.4mm DIA.] GLASS REINFORCED NYLON		
BEARINGS :	BALL PERMANENTLY LUBRICATED		
STUDS :	.50 DIA. [12.7mm DIA.]		
GUIDE ROLLERS :	.94 DIA. [23.9mm DIA.] HIGH IMPACT NYLON		



UNIFIED ETA-4 & ETA-5 FESTOON TROLLEY



20150



20155



20160



20165



20180



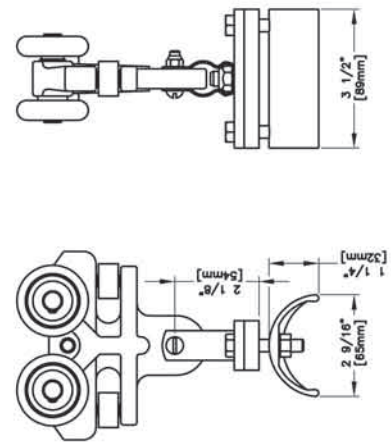
20185

Part Number

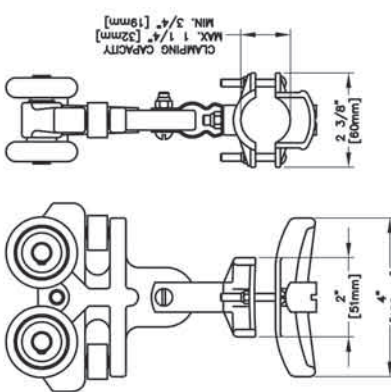
- **20150** ETA-4/5 Festoon Trolley with 100 lb (45kg) Rated Load
- **20155** ETA-4/5 Festoon Trolley and Small Saddle with 100 lb (45kg) Rated Load
- **20160** ETA-4/5 Festoon Trolley and Large Saddle with 100 lb (45kg) Rated Load
- **20165** ETA-4/5 Festoon Trolley and Flatwire Saddle with 100 lb (45kg) Rated Load
- **20180** ETA-4/5 Festoon Trolley and U/I Saddle with 100 lb (45kg) Rated Load
- **20185** ETA-4/5 Festoon Trolley with 12" Saddle 100 lb (45kg) Rated Load

Features

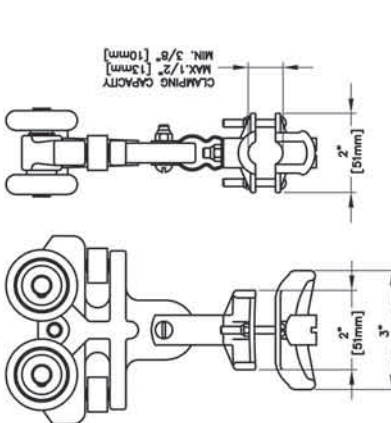
- High tensile almag alloy frame
- 1.8" (46mm) Nylon glass reinforced wheels, with permanently sealed precision ball bearings
- High-impact nylon guide rollers with smooth, quiet operation
- Operates within enclosed rail free from obstructing material
- Dielectrically insulated
- Low inertia: less than 1% of load
- Operating temperature range: +32 degrees to +212 degrees F (0 degrees to +100 degrees C)



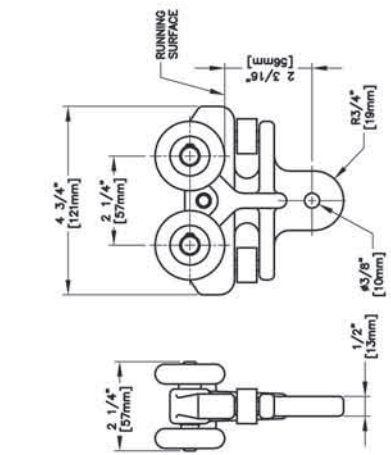
20185 ETA-4/5 FESTOON TROLLEY WITH FLATWIRE SADDLE



20180 ETA-4/5 FESTOON TROLLEY WITH LARGE SADDLE



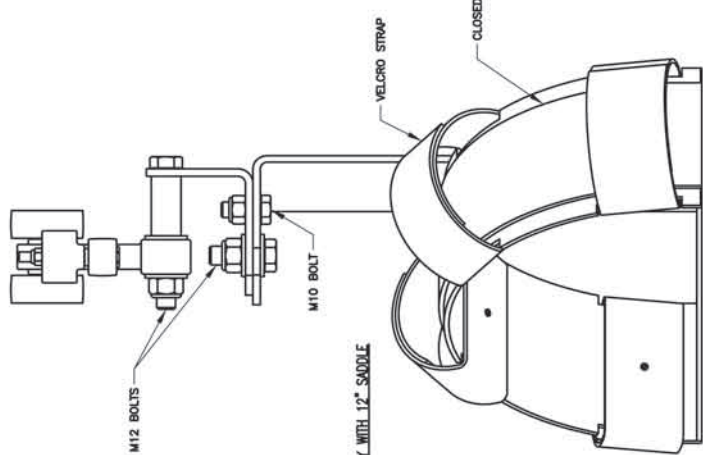
20155 ETA-4/5 FESTOON TROLLEY WITH SMALL SADDLE



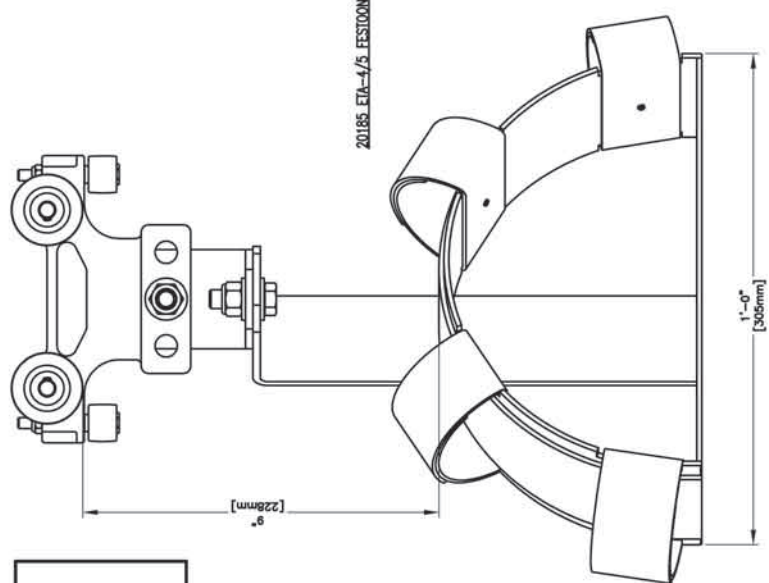
20150 ETA-4/5 FESTOON TROLLEY

TROLLEY	WEIGHT
20150:	1.50 lbs. [.68 Kg.]
20155:	1.68 lbs. [.77 Kg.]
20160:	1.71 lbs. [.78 Kg.]
20165:	2.12 lbs. [.96 Kg.]
20180:	2.68 lbs. [1.22 Kg.]
20185:	9.50 lbs. [4.31 Kg.]

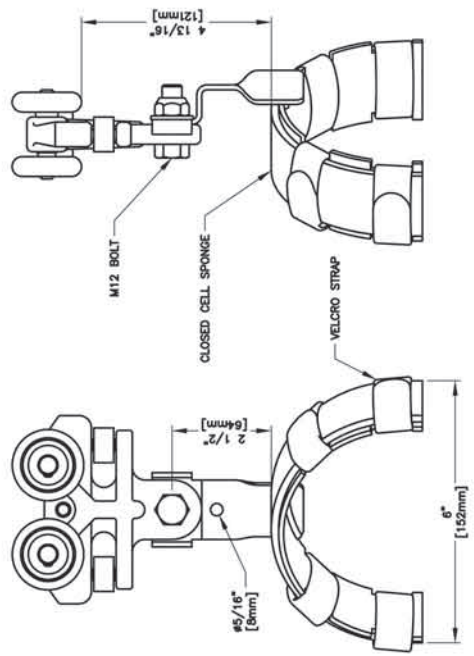
SPECIFICATIONS :
 WHEELS : 1.812 DIA. [46mm DIA.] HIGH IMPACT NYLON
 BODY : ALUM. 35
 BEARINGS : BALL TYPE ESPECIALLY LUBRICATED
 SLEEVES : 25 DIA. [6.35mm DIA.]
 GUIDE ROLLERS : 25 DIA. [6.35mm DIA.] HIGH IMPACT NYLON
 OPERATING TEMP. AT 100% LOAD : -10°F TO +110°F [-23°C TO +43°C]
 ROLLING FRICTION : .2% TO 1% OF LOAD
 MAX. LOAD PER WHEEL : 2.5 lbs. [11.2 Kg.]



20185 ETA-4/5 FESTOON TROLLEY WITH 12\"/>



20180 ETA-4/5 FESTOON TROLLEY WITH UI SADDLE





UNIFIED ETA-4 & ETA-5 FESTOON TROLLEY



20170



20175



78260



78184



78190



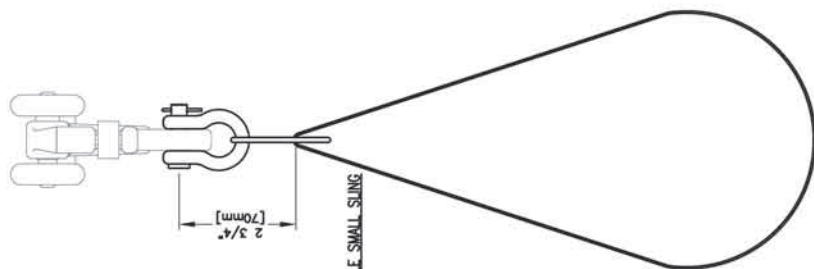
78170

Part Number

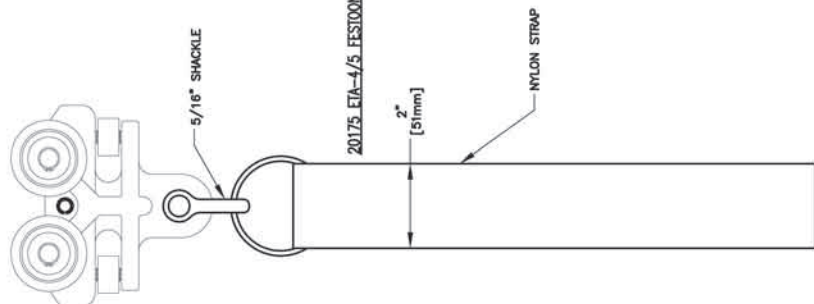
- **20170*** ETA-4/5 Festoon Trolley and 24" Large Sling with 100 lb (45kg) Rated Load
- **20175*** ETA-4/5 Festoon Trolley and 12" Small Sling with 100 lb (45kg) Rated Load
- **78260** ETA-4/5 Festoon Slider
- **78184** Cable Trolley with Small Saddle
- **78190** Cable Trolley with Large Saddle
- **78170** Cable Trolley Flatwire Saddle

Features*

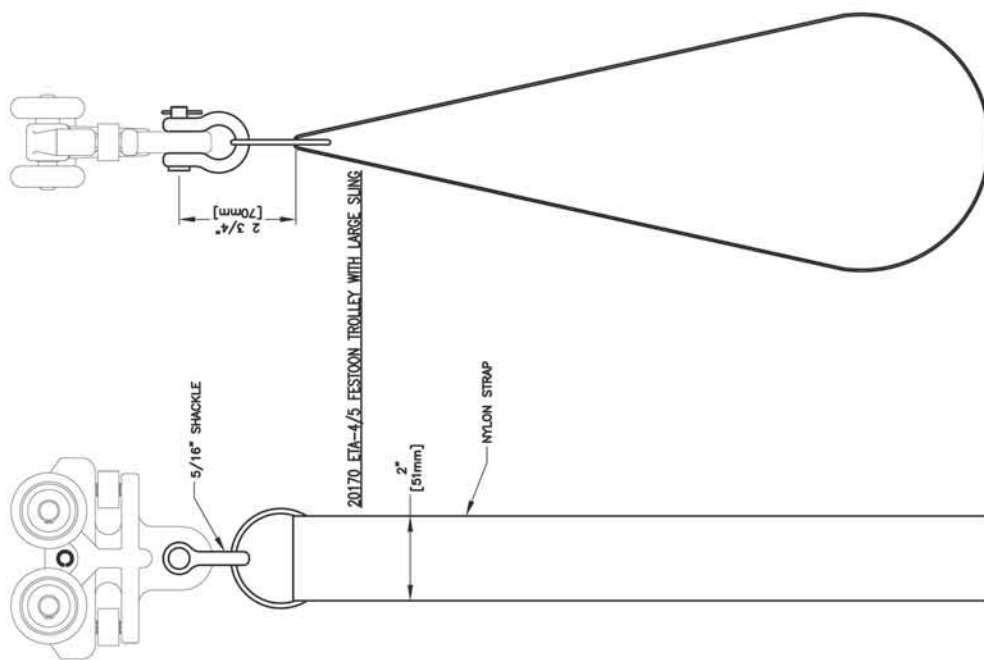
- High tensile almag alloy frame
- 1.8" (46mm) Nylon glass reinforced wheels, with permanently sealed precision ball bearings
- High-impact nylon guide rollers with smooth, quiet operation
- Operates within enclosed rail free from obstructing material
- Dielectrically insulated
- Low inertia: less than 1% of load
- Operating temperature range: +32 degrees to +212 degrees F (0 degrees to +100 degrees C)



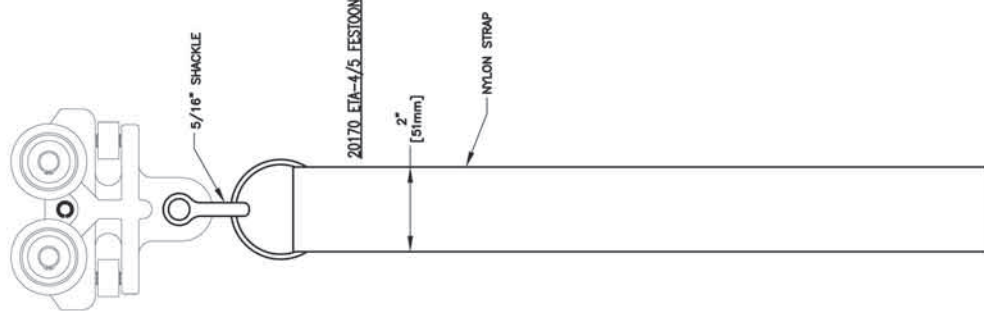
20175 ETA-4/5 FESTOON TROLLEY WITH SADDLE SMALL SLING



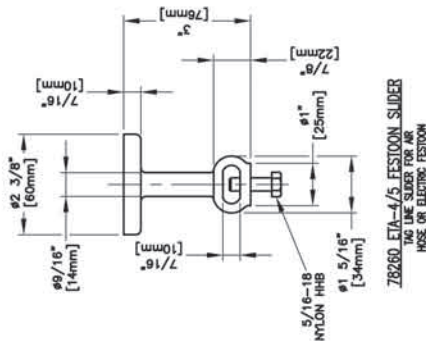
20175 ETA-4/5 FESTOON TROLLEY WITH SADDLE SMALL SLING



20170 ETA-4/5 FESTOON TROLLEY WITH SADDLE LARGE SLING



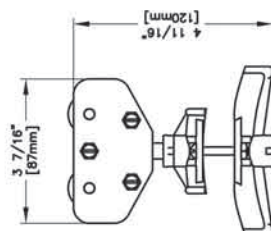
20170 ETA-4/5 FESTOON TROLLEY WITH SADDLE LARGE SLING



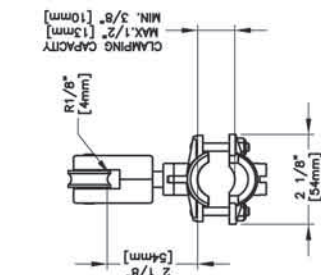
78260 ETA-4/5 FESTOON SLIDER
FOR THE SUBSTITUTION OF
HOSE OR ELECTRIC FESTOON

FESTOON TROLLEY SPECIFICATIONS:
 WHEELS: 1.812 DIA. [46mm DIA.] HIGH IMPACT NYLON
 BEARINGS: BALL TYPE PERMANENTLY LUBRICATED
 STUDS: .50 DIA. [13mm DIA.]
 GUIDE ROLLERS: .54 DIA. [24mm DIA.] HIGH IMPACT NYLON
 OPERATING TEMP. AT 100% LOAD: -10°F TO +110°F [-23°C TO +43°C]
 ROLLING FRICTION: .5% TO 1% OF LOAD
 MAX. LOAD PER WHEEL: 25 lbs. [11.2 kg.]

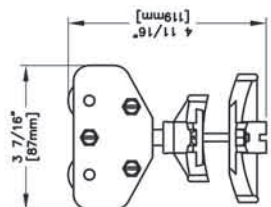
TROLLEY	WEIGHT
20170:	2.00 lbs. [.91 Kg.]
20175:	1.83 lbs. [.83 Kg.]
78260:	.07 lbs. [.03 Kg.]
78170:	.46 lbs. [.21 Kg.]
78184:	.37 lbs. [.17 Kg.]
78190:	.41 lbs. [.19 Kg.]



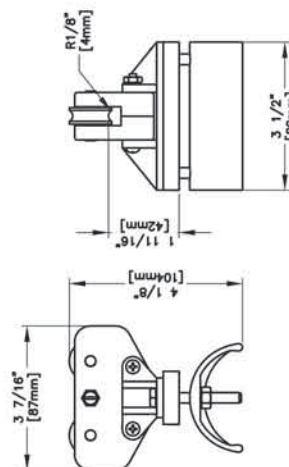
78190_CABLE TROLLEY WITH LARGE SADDLE

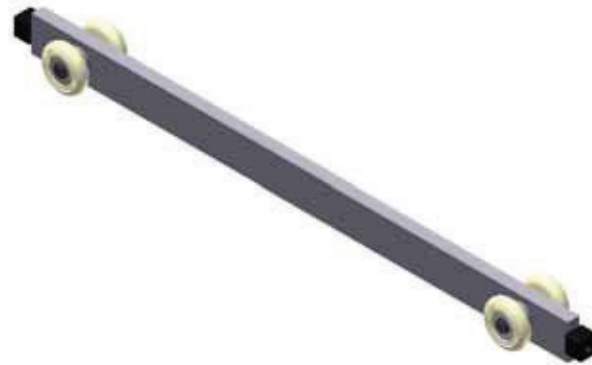


78184_CABLE TROLLEY WITH SMALL SADDLE

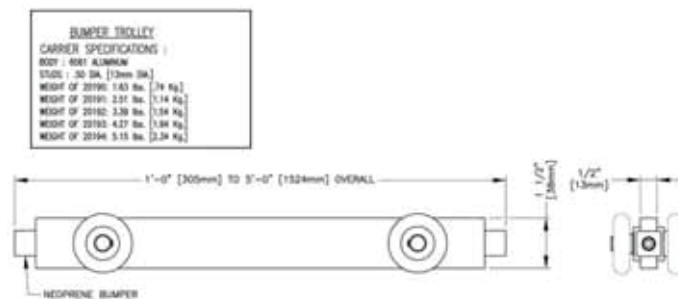


78170_CABLE TROLLEY WITH FLATWIRE SADDLE





ETA-4/ETA-5 BUMPER TROLLEY



Part Number

- **20190** 1'-0" (305mm) Bumper trolley to operate on Unified ETA-4 and ETA-5
- **20191** 2'-0" (610mm) Bumper trolley to operate on Unified ETA-4 and ETA-5
- **20192** 3'-0" (914mm) Bumper trolley to operate on Unified ETA-4 and ETA-5
- **20193** 4'-0" (1219mm) Bumper trolley to operate on Unified ETA-4 and ETA-5
- **20194** 5'-0" (1524mm) Bumper trolley to operate on Unified ETA-4 and ETA-5

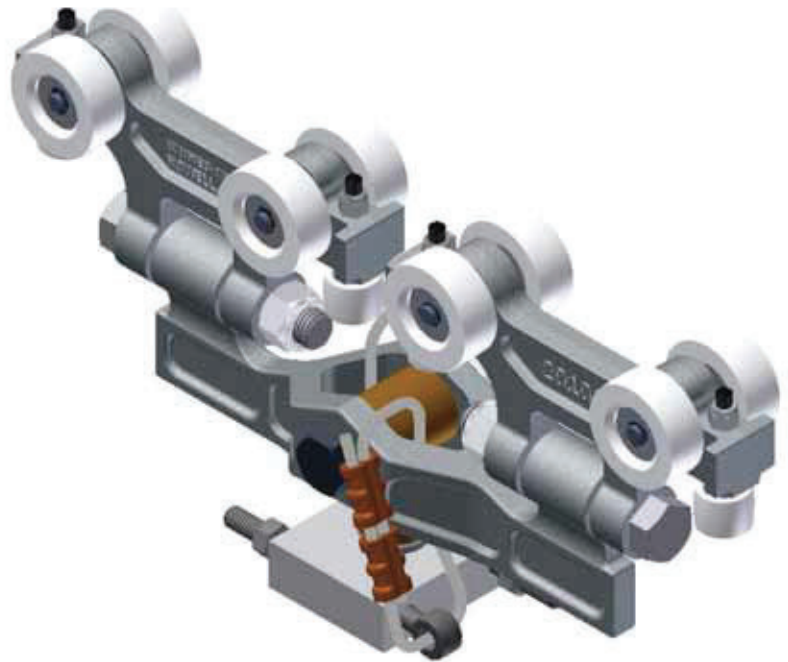
Features

- Aluminum trolley body
- 1.8" (46mm) High-impact nylon wheels, with permanently sealed precision ball bearings
- Operates within enclosed rail free from obstructing material
- Dielectrically insulated
- Low inertia: less than 1% of load
- Operating temperature range: +32 degrees to +212 degrees F (0 degrees to +100 degrees C)



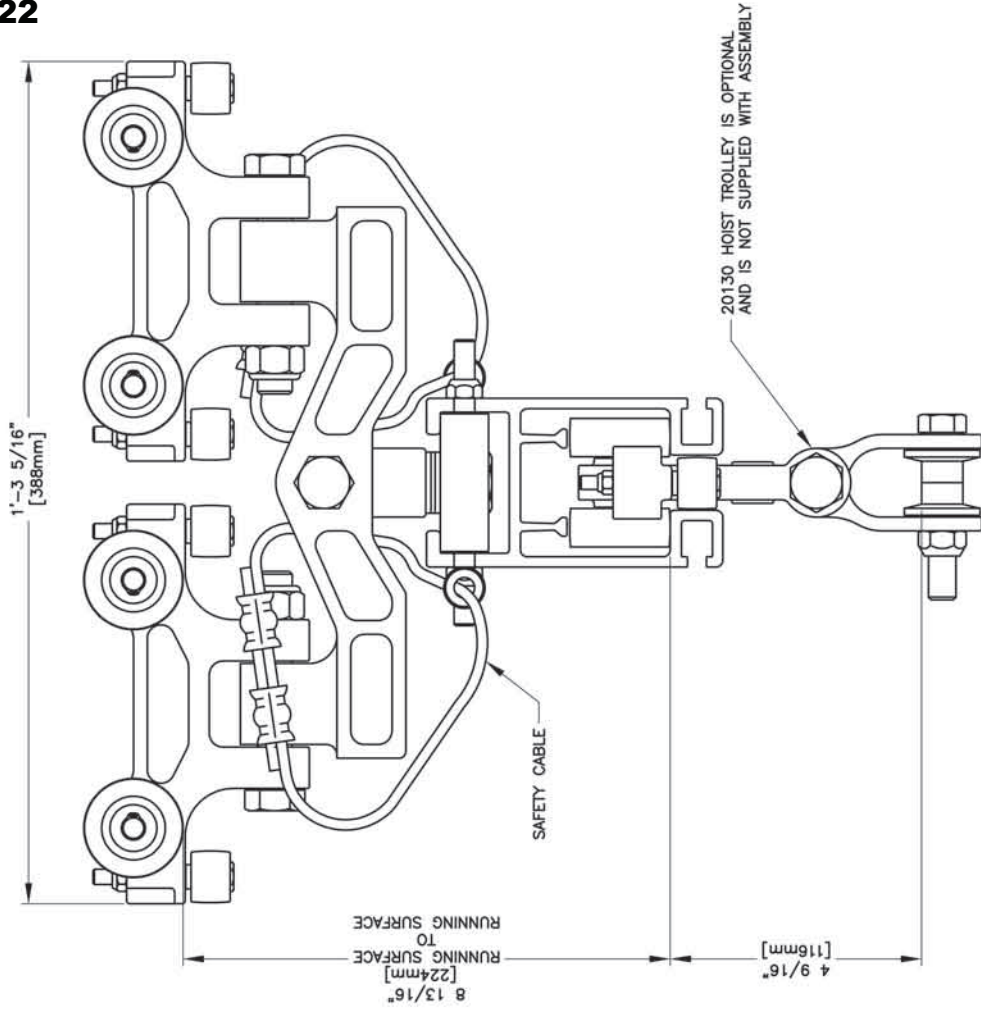
22521 ETA-4/5 SINGLE END TRUCK

- To operate on ETA-4 and ETA-5
- Rated Load 550 lbs. (250kg)

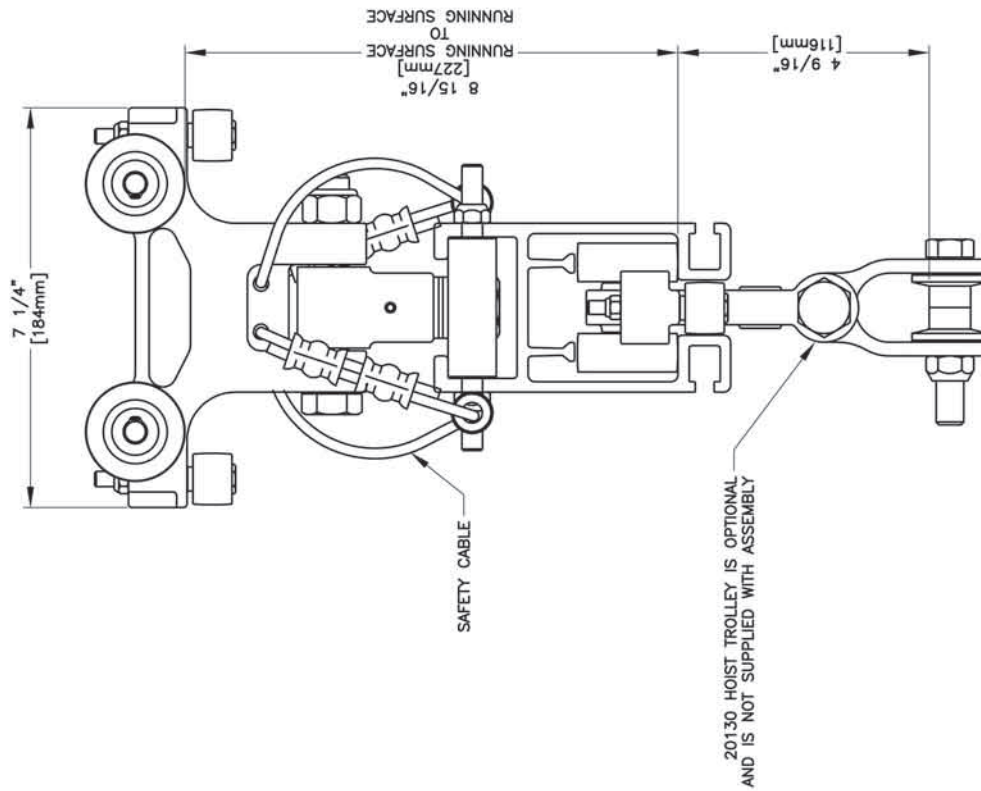


22540 ETA-4/5 DUAL END TRUCK

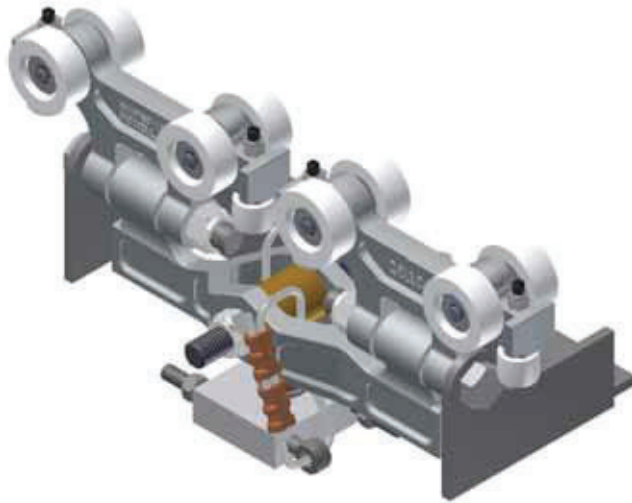
- To operate on ETA-4 and ETA-5
- Rated Load 1100 lbs. (500kg)



22540 DUAL END TRUCK
 DUAL TROLLEY END TRUCK AT EACH END OF CRANE ORDER.
 RATED LOAD: 1100 lbs. [500 KG.]
 WEIGHT: 9 lbs. [4.08 KG.]

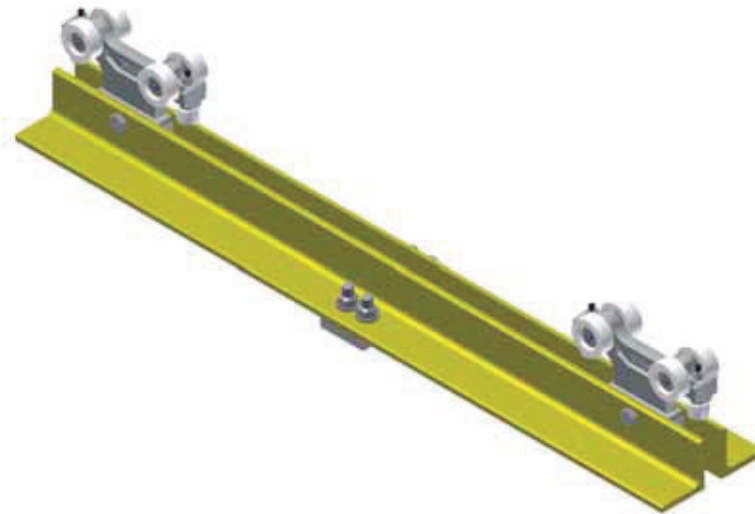


22521 SINGLE END TRUCK
 SINGLE TROLLEY END TRUCK AT EACH END OF CRANE ORDER.
 RATED LOAD: 550 lbs. [250 KG.]
 WEIGHT: 5 lbs. [2.27 KG.]



- **22545** ETA-4/5 Rigid End Truck for Spans up to 18' (5.5m)
- Rated Load 1100 lbs. (500kg)

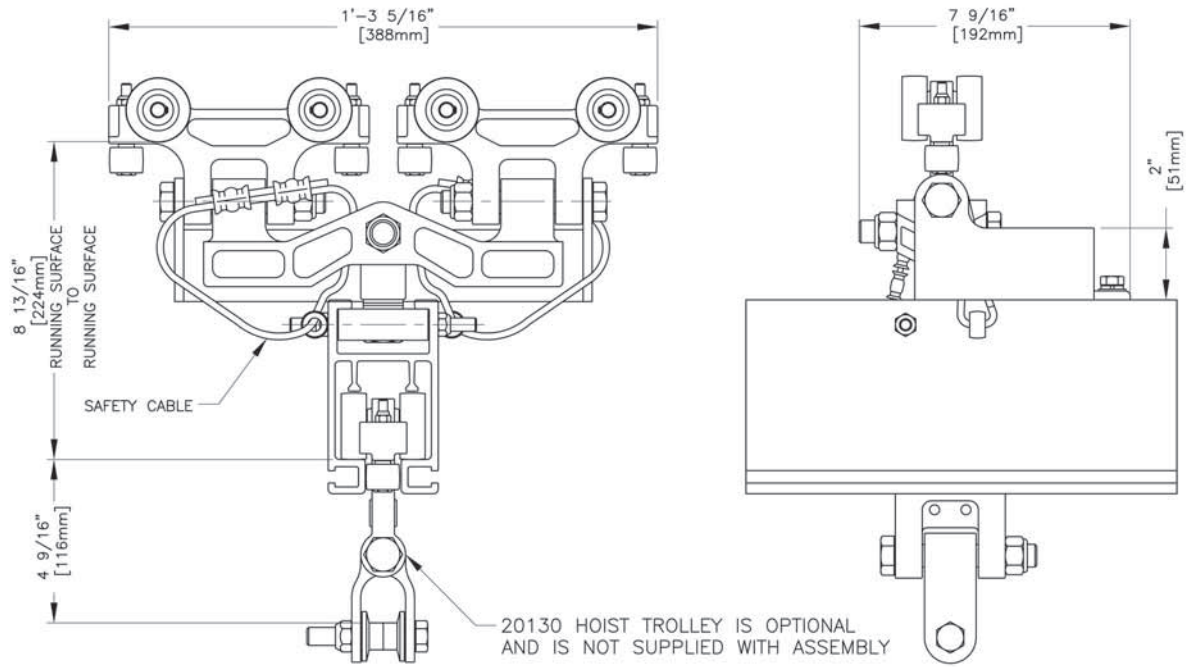
Weight
15 lbs (6.8kg)



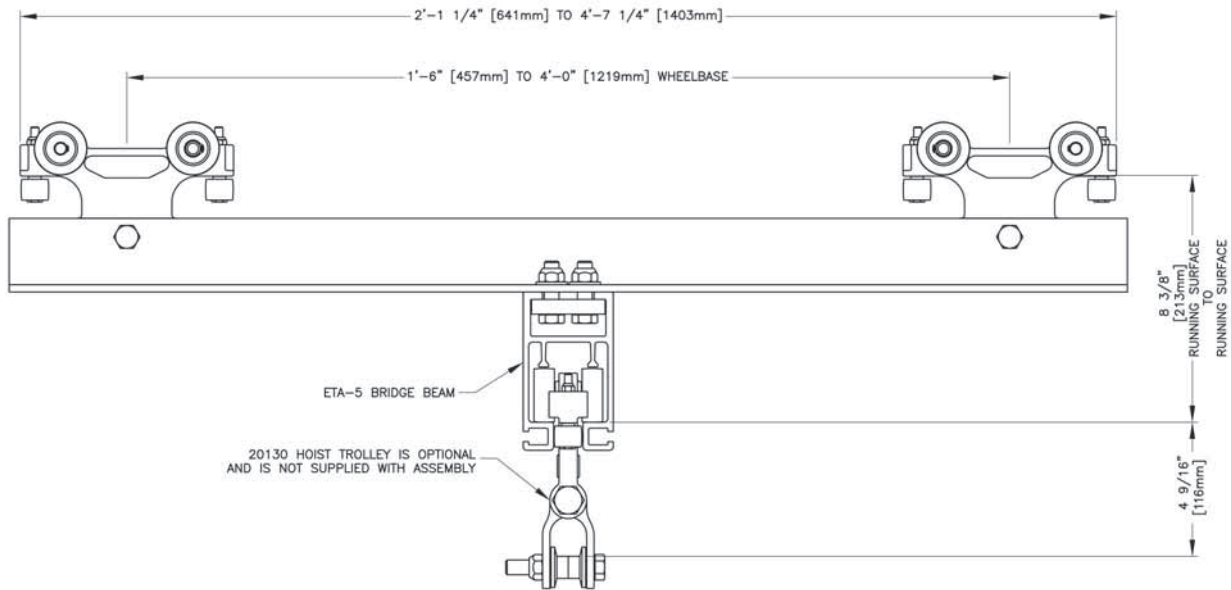
ETA-4/5 RIGID END TRUCK

- End truck assemblies for single girder bridge cranes to run on ETA-4/5 Runway.
- Attaches to ETA-4, ETA-5 and ETA-8 Bridges.

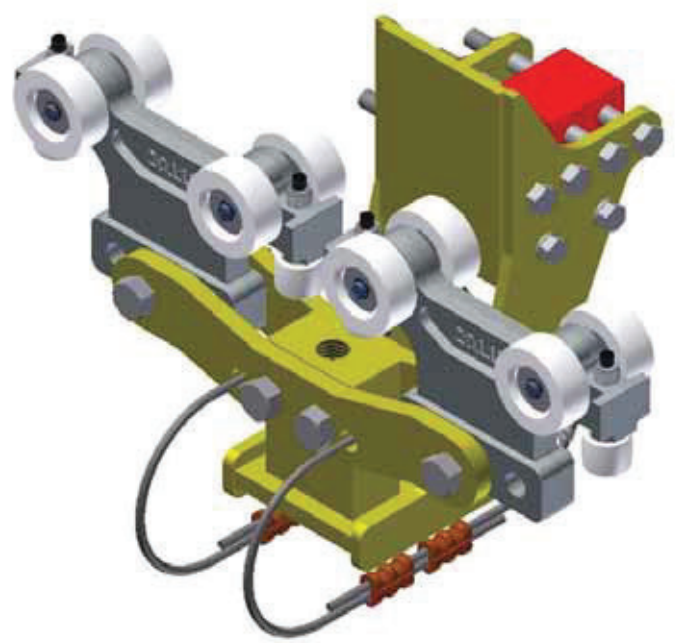
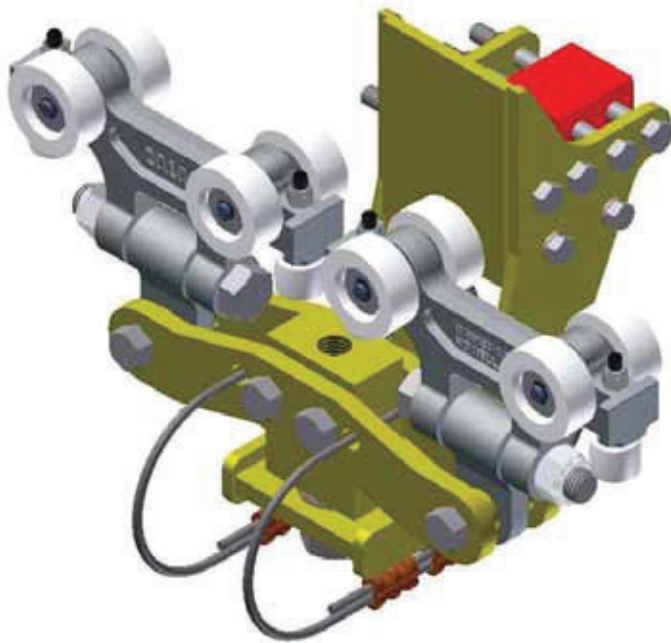
- | | |
|--|-----------------------------------|
| ■ 22546 1'-6" (457mm) wheelbase for spans 2'-0" (609mm) to 5'-0" (1524mm) | Weight
24 lbs. (10.8kg) |
| ■ 22547 2'-0" (609mm) wheelbase for spans 6'-0" (1829mm) to 9'-0" (2743mm) | 28 lbs. (12.7kg) |
| ■ 22548 2'-6" (762mm) wheelbase for spans 10'-0" (3048mm) to 13'-0" (3962mm) | 32 lbs. (14.5kg) |
| ■ 22549 3'-0" (914mm) wheelbase for spans 14'-0" (4267mm) to 17'-0" (5182mm) | 36 lbs. (16.3kg) |
| ■ 22550 3'-6" (1066mm) wheelbase for spans 18'-0" (5486mm) to 20'-0" (6096mm) | 40 lbs. (18.1kg) |
| ■ 22551 4'-0" (1219mm) wheelbase for spans 21'-0" (6400mm) to 25'-0" (7620mm) | 44 lbs. (20kg) |
- No safety cable included
 - Rated Load 1100 lbs. (500kg)



22545 RIGID MOUNT END TRUCK
 DUAL TROLLEY END TRUCK AT EACH END OF CRANE GIRDER.
 RATED LOAD: 1100 lbs. [500 Kg.]
 WEIGHT: 15 lbs. [6.8 Kg.]



ETA-4 RIGID END TRUCK
 DUAL TROLLEY END TRUCK AT EACH
 END OF CRANE GIRDER.
 RATED LOAD: 1100 lbs. [500 Kg.]
 NO SAFETY CABLE INCLUDED

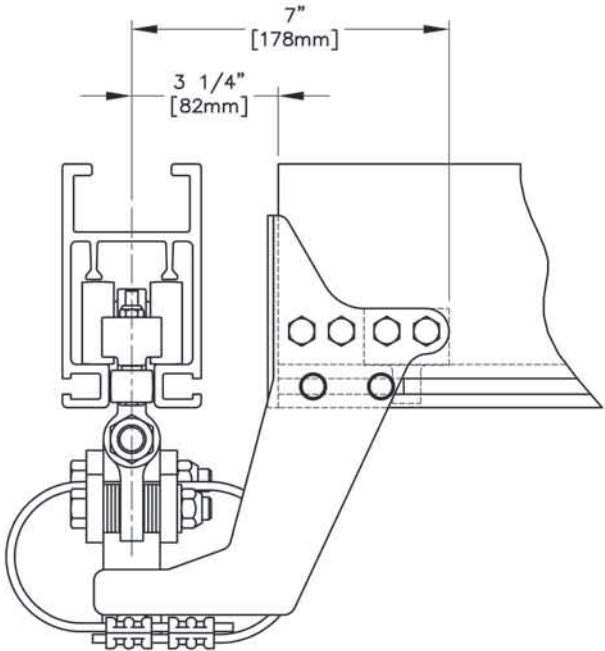
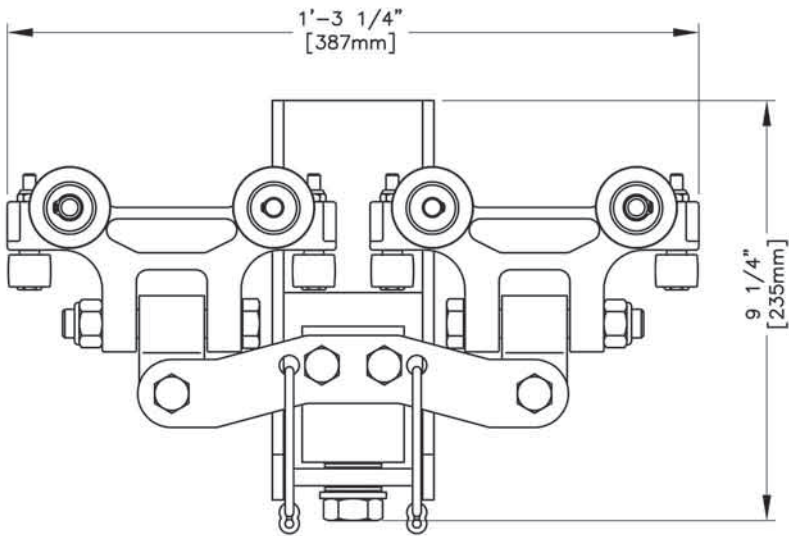


22600 ETA-4/5 Articulating Low Headroom End Truck

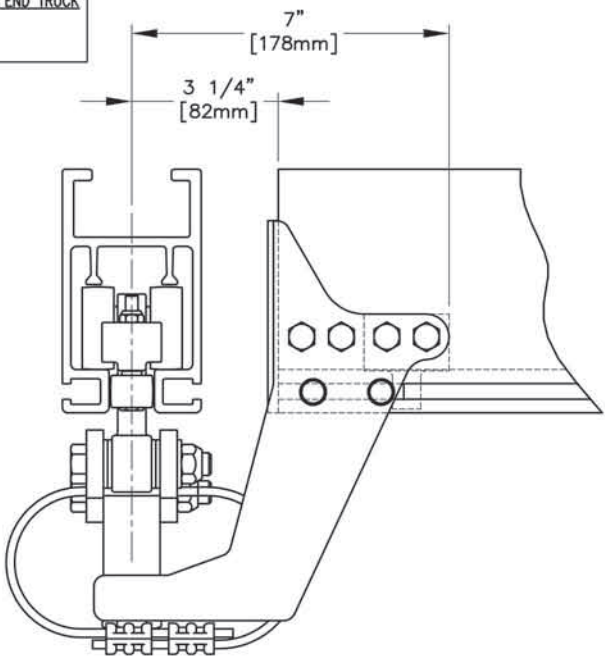
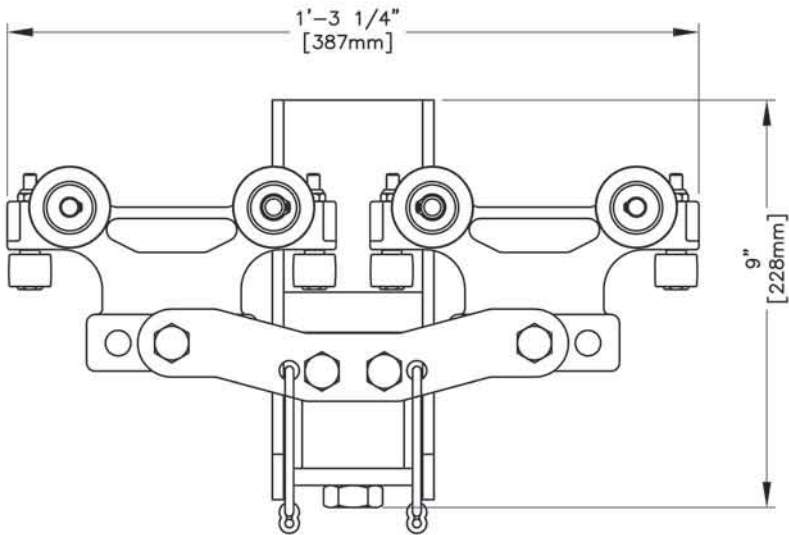
- To operate on ETA-4/5
- Rated Load 1100 lbs. (500kg)

22605 ETA-4/5 Rigid Low Headroom End Truck

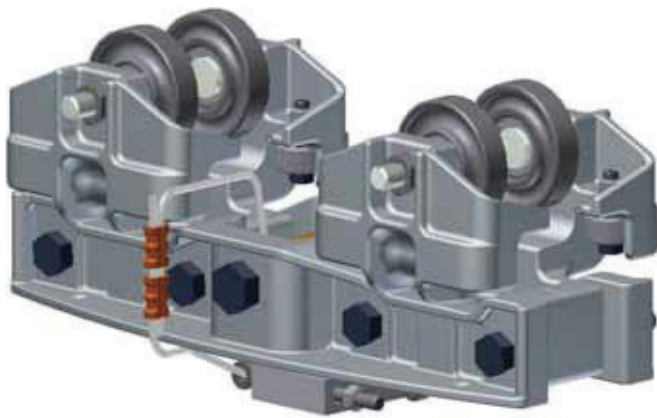
- To operate on ETA-4/5
- Rated Load 1100 lbs. (500kg)



22600 ETA-4/5 ARTICULATING LOW HEAD ROOM END TRUCK
 DUAL TROLLEY END TRUCK AT EACH END OF CRANE ORDER.
 RATED LOAD: 1100 lbs. [500 KG.]
 WEIGHT: 16 lbs. [7.26 KG.]



22605 ETA-4/5 RIGID LOW HEAD ROOM END TRUCK
 DUAL TROLLEY END TRUCK AT EACH END OF CRANE ORDER.
 RATED LOAD: 1100 lbs. [500 KG.]
 WEIGHT: 13 lbs. [5.90 KG.]



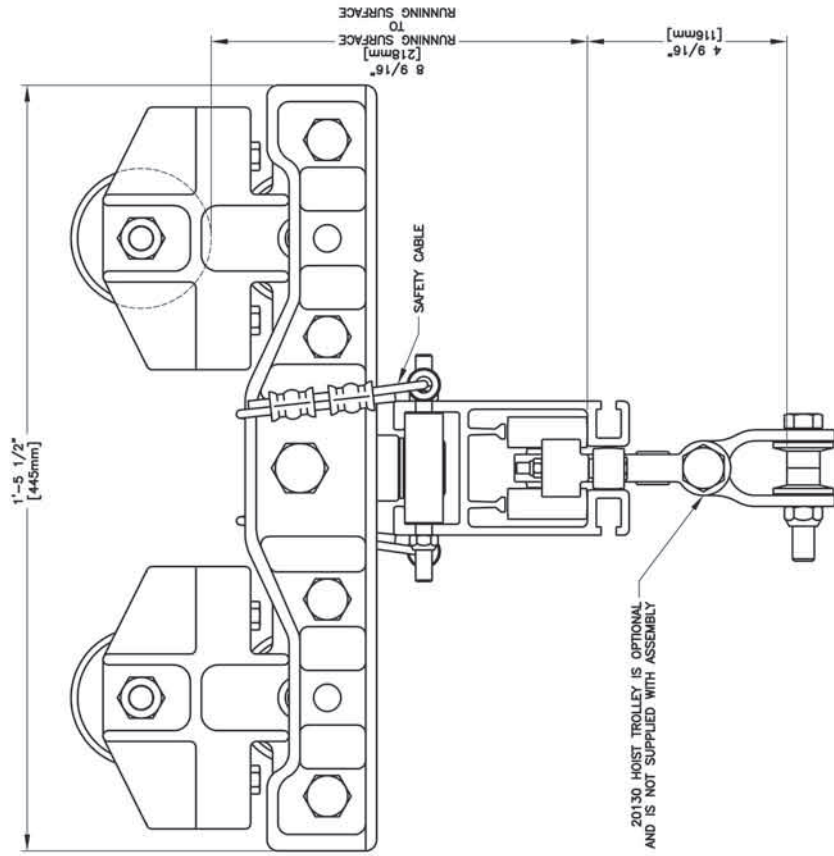
STANDARD RAIL END TRUCKS (WITHOUT KICKUP WHEELS)

- End truck assemblies for bridge cranes.
Rated Load 1100 lbs. (500kg)
- **22557** MBC-500-3-325 End Truck to run on 3.25 Patent Track.
- **22558** MBC-500-3-333 End Truck to run on S6x12.5.
- **22559** MBC-500-3-4-266 End Truck to run on S4x7.7.

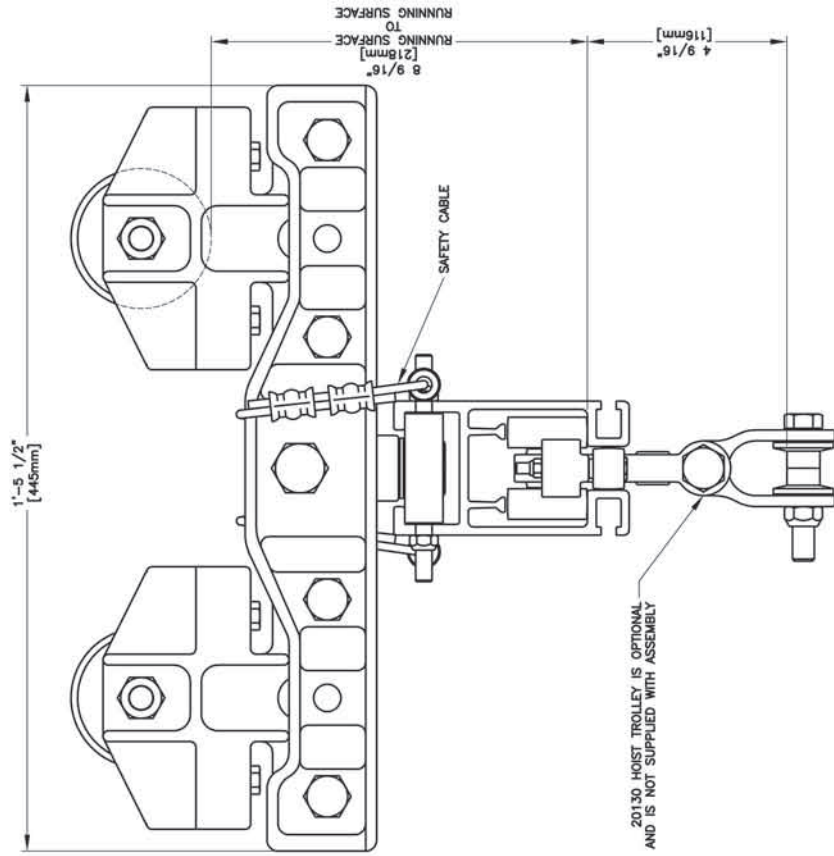
- Consult Factory to run on Metric Beams.

STANDARD RAIL END TRUCKS (WITH KICKUP WHEELS)

- End truck assemblies for bridge cranes.
Rated Load 1100 lbs. (500kg)
- **22574** MBC-500-3-325 End Truck to run on 3.25 Patent Track.
- **22575** MBC-500-3-333 End Truck to run on S6x12.5.
- **22576** MBC-500-3-4-266 End Truck to run on S4x7.7.



END TRUCKS (WITH KICKUP WHEELS)
 DUAL TROLLEY END TRUCK AT EACH END OF CRANE GIRDER.
 RATED LOAD: 1100 lbs. [500 KG.]
 22574 MBC-500-3-325 END TRUCK TO RUN ON 3.25 PATENT TRACK.
 22575 MBC-500-3-333 END TRUCK TO RUN ON S6x12.5.
 22576 MBC-500-3-4-2.66 END TRUCK TO RUN ON S4x7.7.
 WEIGHT: 35 LBS. [15.88 KG.]

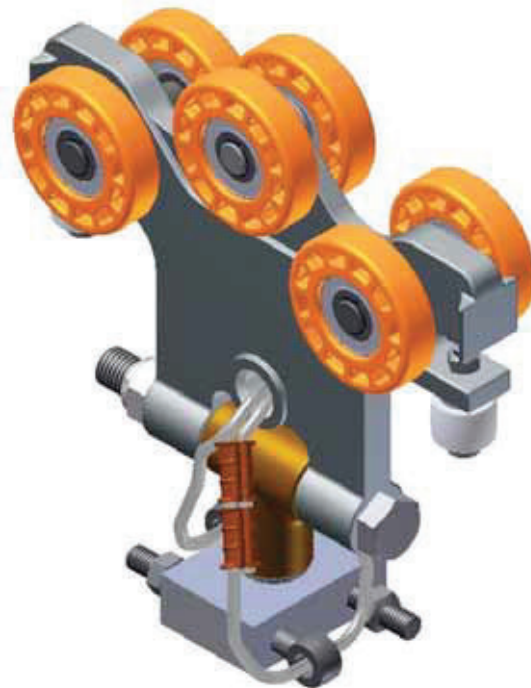


END TRUCKS (WITHOUT KICKUP WHEELS)
 DUAL TROLLEY END TRUCK AT EACH END OF CRANE GIRDER.
 RATED LOAD: 1100 lbs. [500 KG.]
 22557 MBC-500-3-325 END TRUCK TO RUN ON 3.25 PATENT TRACK.
 22558 MBC-500-3-333 END TRUCK TO RUN ON S6x12.5.
 22559 MBC-500-3-4-2.66 END TRUCK TO RUN ON S4x7.7.
 WEIGHT: 32 LBS. [14.51 KG.]



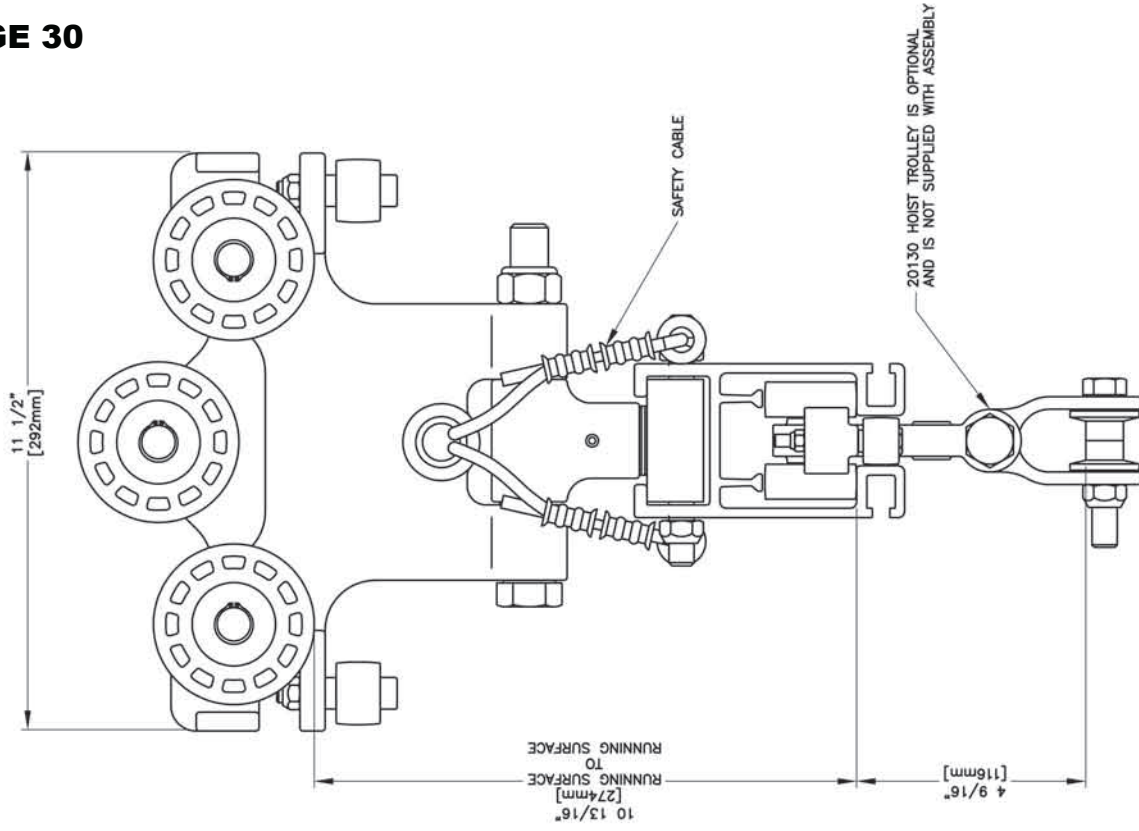
**22041 SINGLE END TRUCK
(WITHOUT KICKUP WHEELS)**

- For ETA-5 bridge to run ETA-8 runway
- Rated Load 1100 lbs. (500kg)

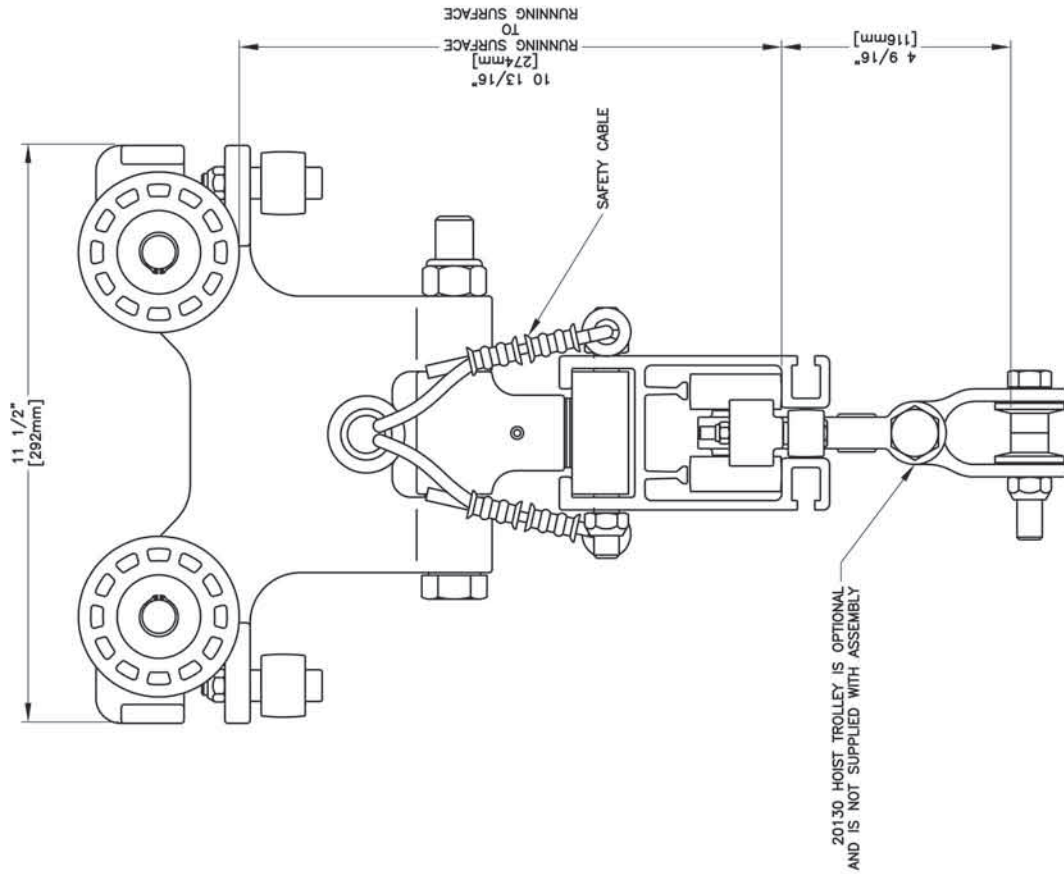


**22046 SINGLE END TRUCK
(WITH KICKUP WHEELS)**

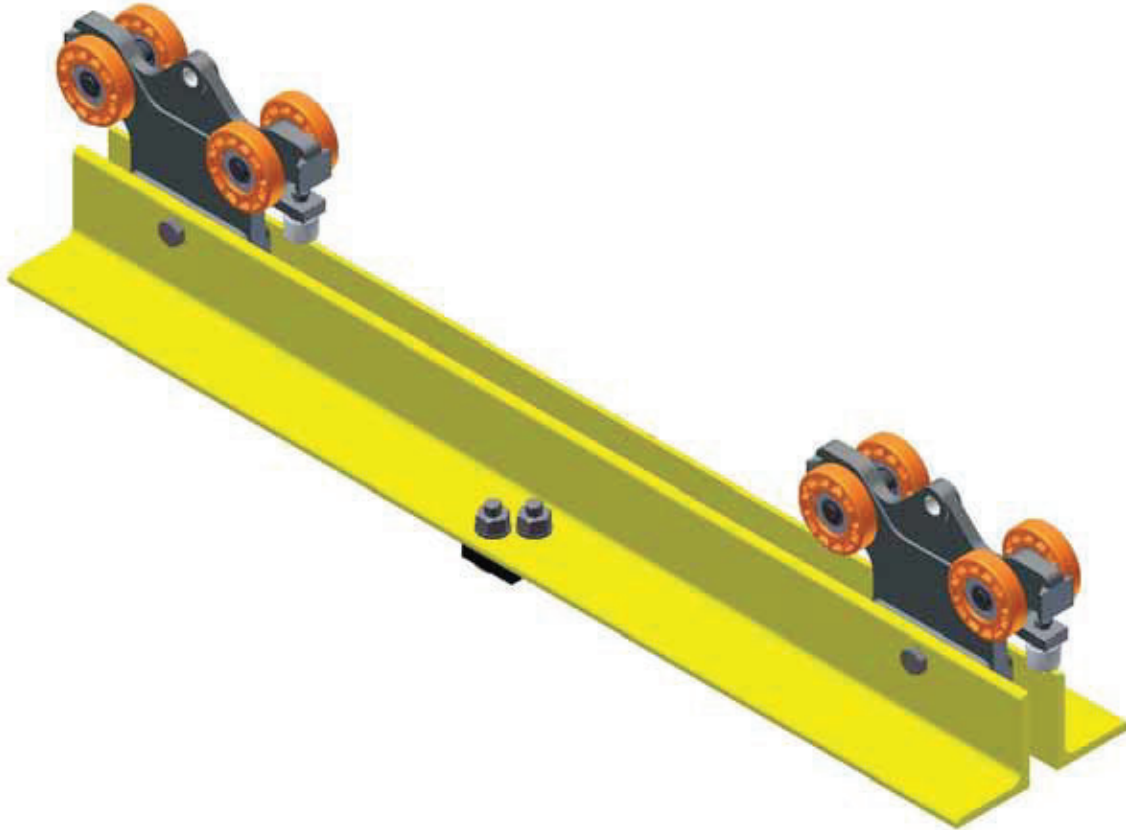
- For ETA-5 bridge to run ETA-8 runway
- Rated Load 1100 lbs. (500kg)



22046 SINGLE END TRUCK (WITH KICKUP WHEELS)
 RATED LOAD: 1100 lbs. [500 KG.]
 SINGLE END TRUCK AT EACH END OF AN ETH-5 CRANE GIBBER TO RUN ON ETH-5 RUNWAY.
 WEIGHT: 14 LBS. [6.35 KG.]

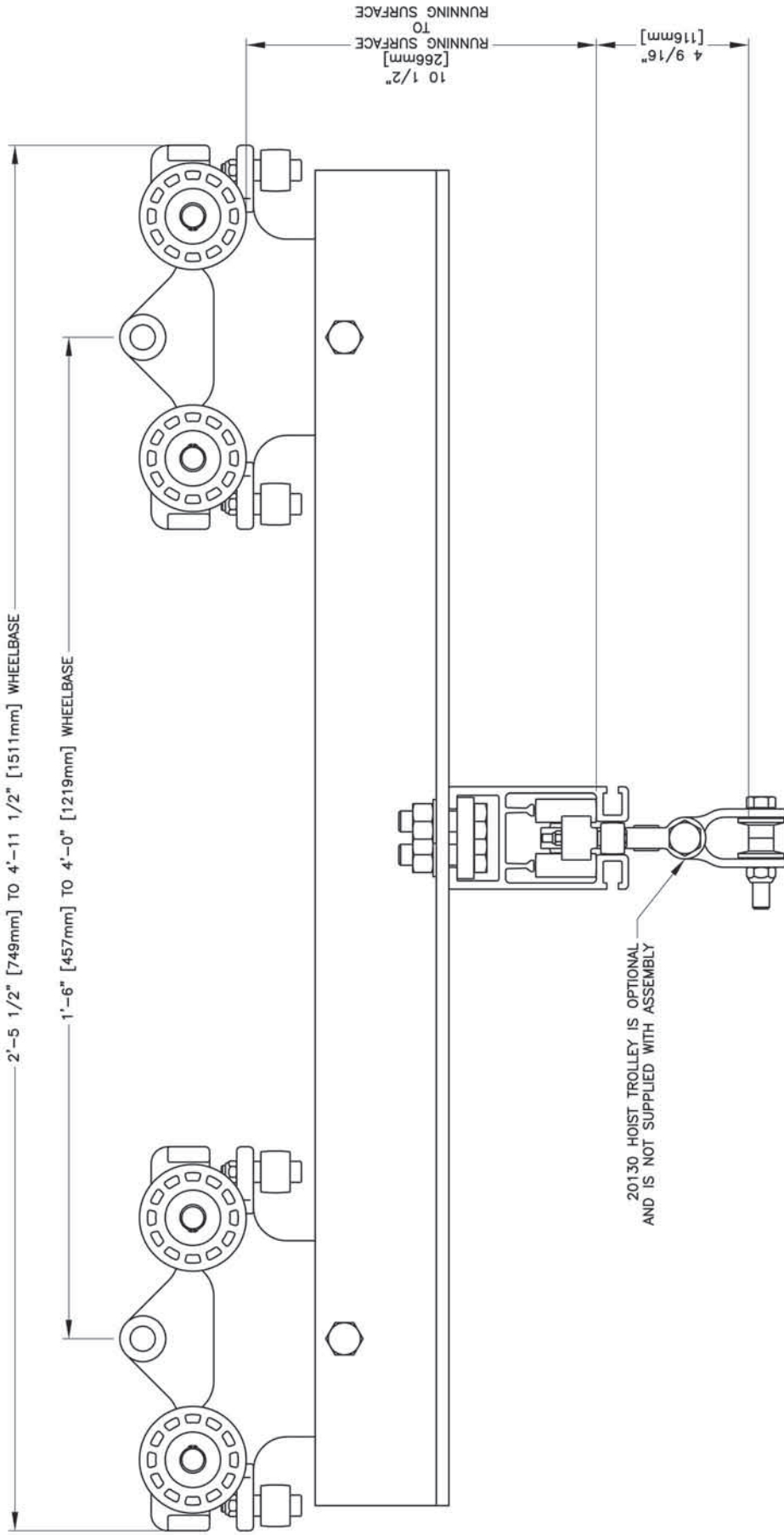


22041 SINGLE END TRUCK (WITHOUT KICKUP WHEELS)
 RATED LOAD: 1100 lbs. [500 KG.]
 SINGLE END TRUCK AT EACH END OF AN ETH-5 CRANE GIBBER TO RUN ON ETH-5 RUNWAY.
 WEIGHT: 12 LBS. [5.44 KG.]

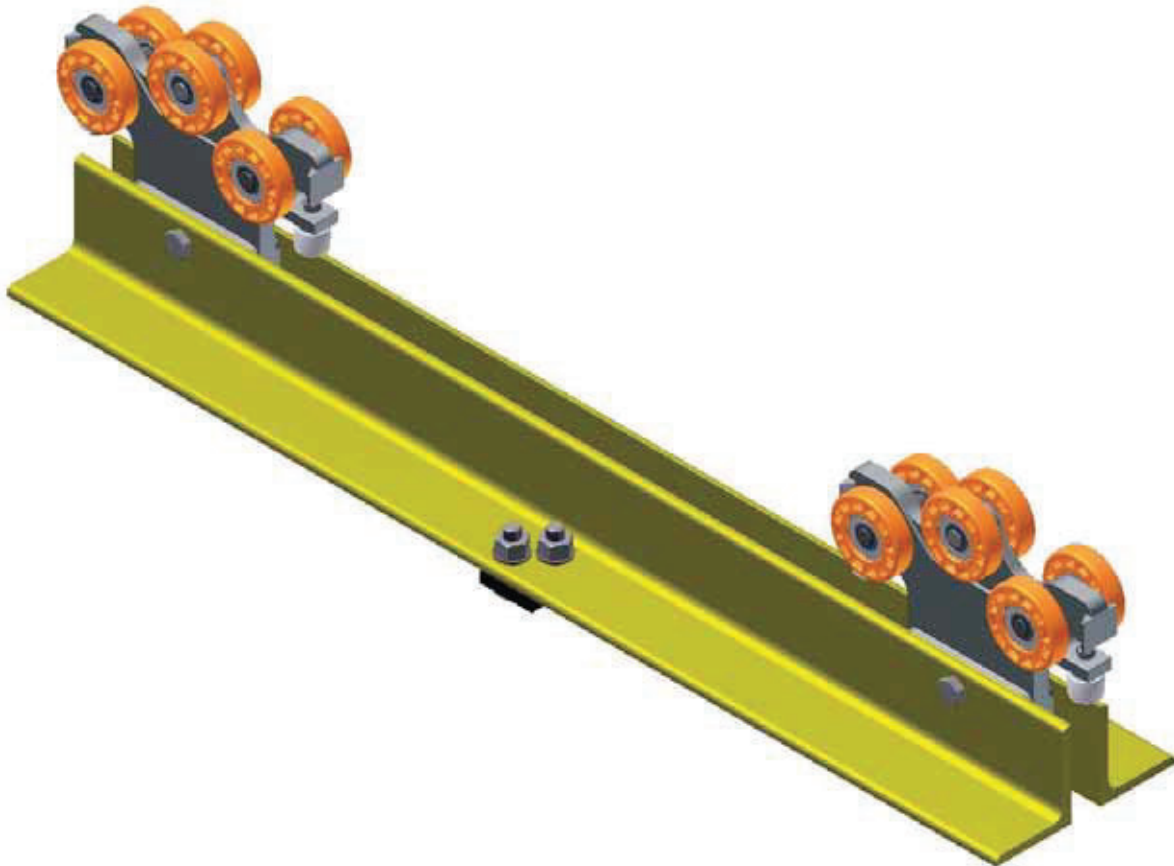


ETA-8 RIGID END TRUCKS WITHOUT KICKUP

- End truck assemblies for single girder bridge cranes to run on ETA-8 Runway.
- Attaches to ETA-4, ETA-5 and ETA-8 Bridges.
- **22221** 1'-6" (457mm) wheelbase for spans 3'-0" (914mm) to 6'-0" (1829mm) **Weight** 61 lbs. (27.6kg)
- **22222** 2'-0" (609mm) wheelbase for spans 7'-0" (2133mm) to 10'-0" (3048mm) 70 lbs. (32kg)
- **22223** 2'-6" (762mm) wheelbase for spans 11'-0" (3353mm) to 14'-0" (4267mm) 79 lbs. (35.8kg)
- **22224** 3'-0" (914mm) wheelbase for spans 15'-0" (4572mm) to 18'-0" (5486mm) 88 lbs. (40kg)
- **22225** 3'-6" (1066mm) wheelbase for spans 19'-0" (5791mm) to 21'-0" (6400mm) 98 lbs. (44.5kg)
- **22226** 4'-0" (1219mm) wheelbase for spans 22'-0" (6705mm) to 25'-0" (7620mm) 107 lbs. (48.5kg)
- Rated Load 2200 lbs. (1000kg)
- No safety cable included



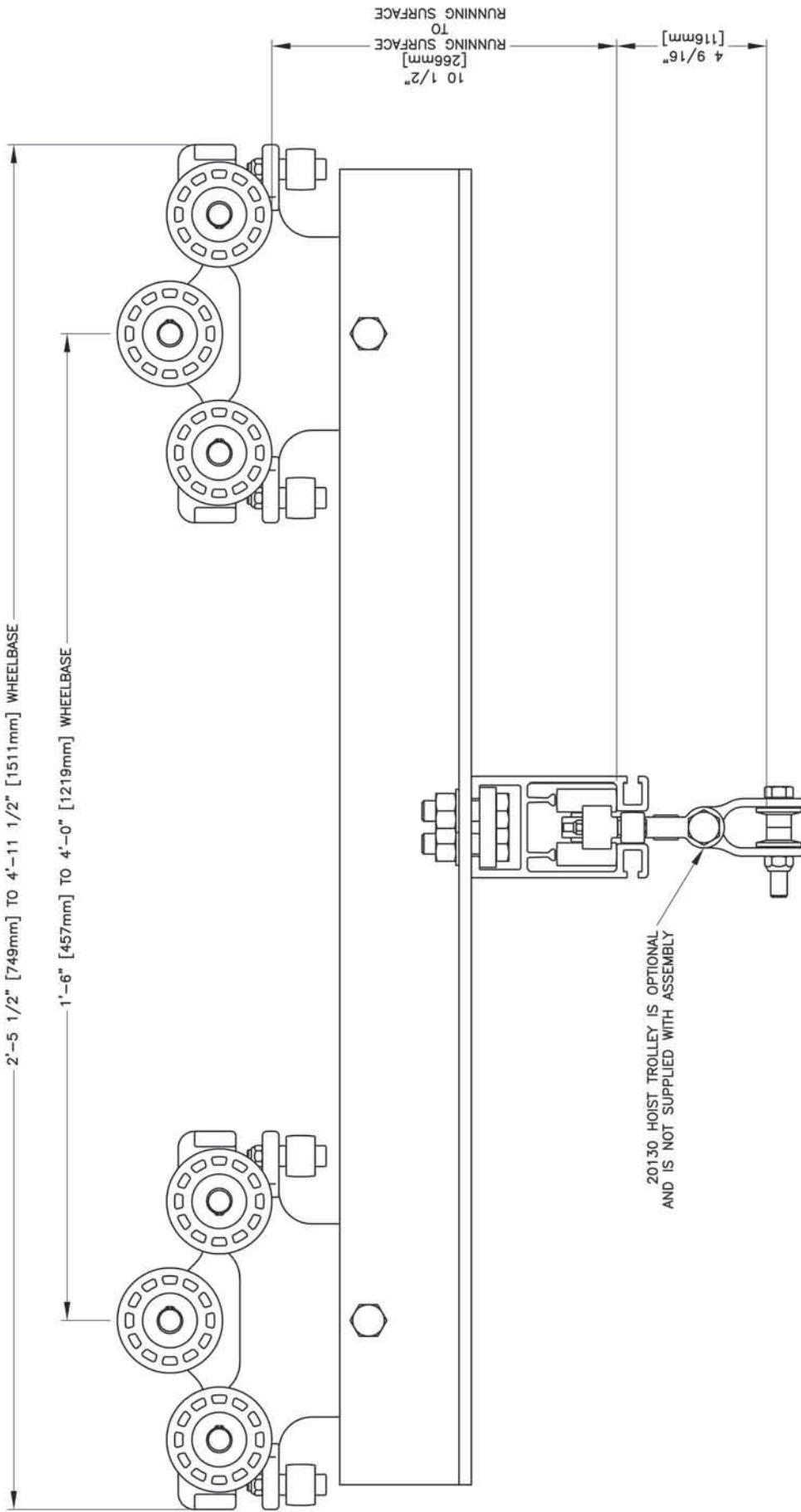
ETA-8 RIGID END TRUCK WITHOUT KICKUP
 DUAL TROLLEY END TRUCK AT EACH
 END OF CRANE GIRDER.
 RATED LOAD: 2200 lbs. [1000 Kg.]
 NO SAFETY CABLE INCLUDED

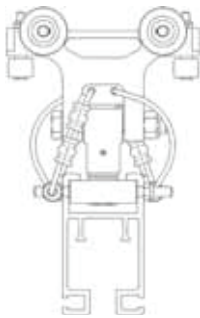
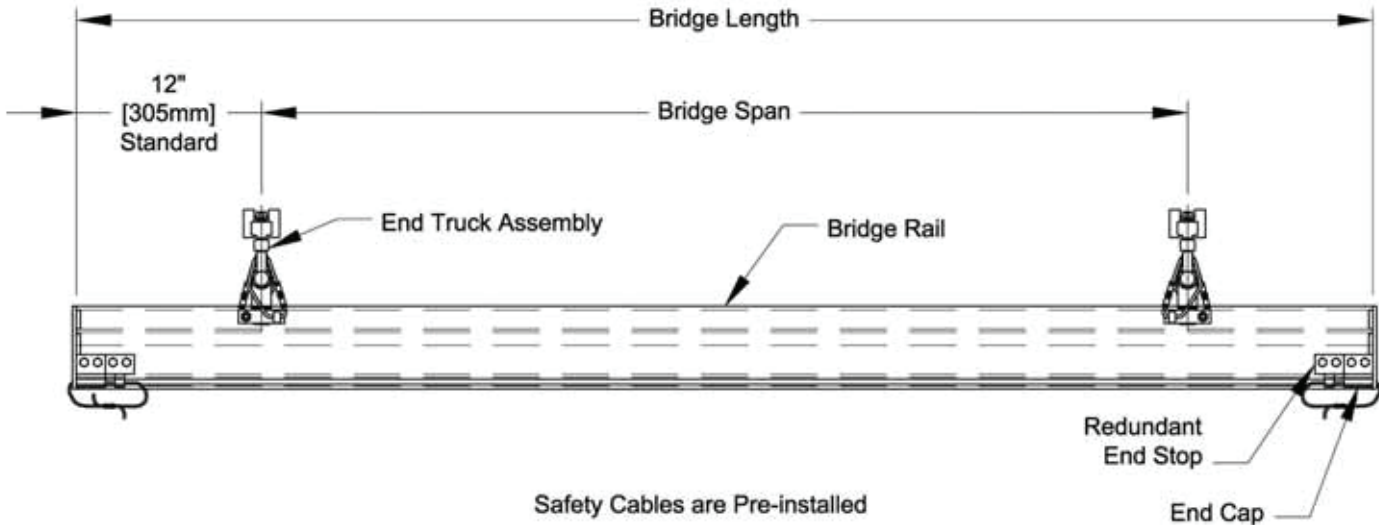


ETA-8 RIGID END TRUCKS WITH KICKUP

- End truck assemblies for single girder bridge cranes to run on ETA-8 Runway.
- Attaches to ETA-4, ETA-5 and ETA-8 Bridges.

	Weight
■ 22227 1'-6" (457mm) wheelbase for spans 3'-0" (914mm) to 6'-0" (1829mm)	63 lbs. (28.5kg)
■ 22228 2'-0" (609mm) wheelbase for spans 7'-0" (2133mm) to 10'-0" (3048mm)	72 lbs. (32.6kg)
■ 22229 2'-6" (762mm) wheelbase for spans 11'-0" (3353mm) to 14'-0" (4267mm)	81 lbs. (36.7kg)
■ 22230 3'-0" (914mm) wheelbase for spans 15'-0" (4572mm) to 18'-0" (5486mm)	90 lbs. (40.8kg)
■ 22231 3'-6" (1066mm) wheelbase for spans 19'-0" (5791mm) to 21'-0" (6400mm)	99 lbs. (45kg)
■ 22232 4'-0" (1219mm) wheelbase for spans 22'-0" (6705mm) to 25'-0" (7620mm)	108 lbs. (49kg)
■ Rated Load 2200 lbs. (1000kg)	
■ No safety cable included	





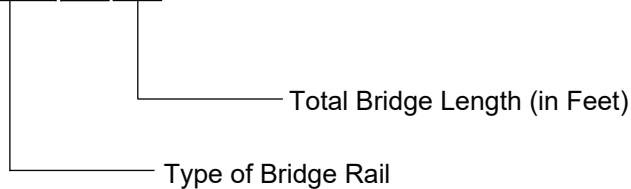
The Bridge Crane Assembly Consists of:

- One bridge beam (section of rail)
- Two end truck assemblies (mounted to the bridge with a trolley to roll inside of the runway, safety cables are pre-installed)
- Double end stop Assembly (Ull Standard)

Example (Bridge Rail only)

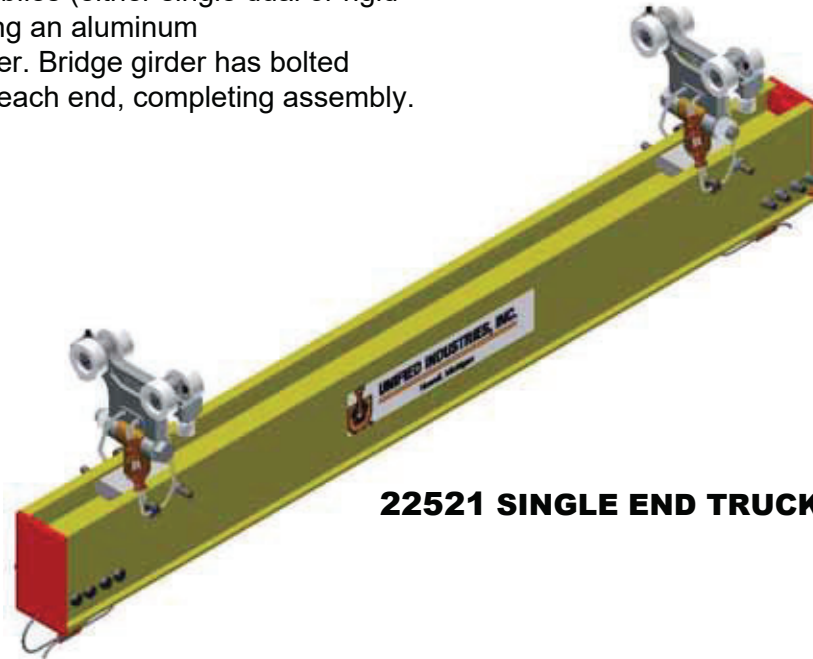
Order Number:

ETA5|BR|08

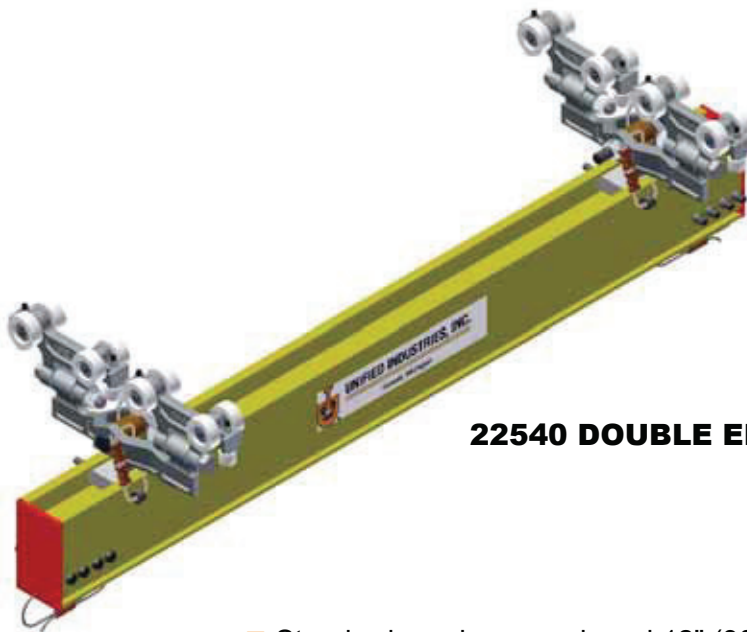


- Round up to the nearest foot (Cut to 8'-6" = ETA5BR09)

Unified ETA-5 single girder bridge crane consists of two end truck assemblies (either single dual or rigid end trucks) supporting an aluminum enclosed bridge girder. Bridge girder has bolted double end stops at each end, completing assembly.

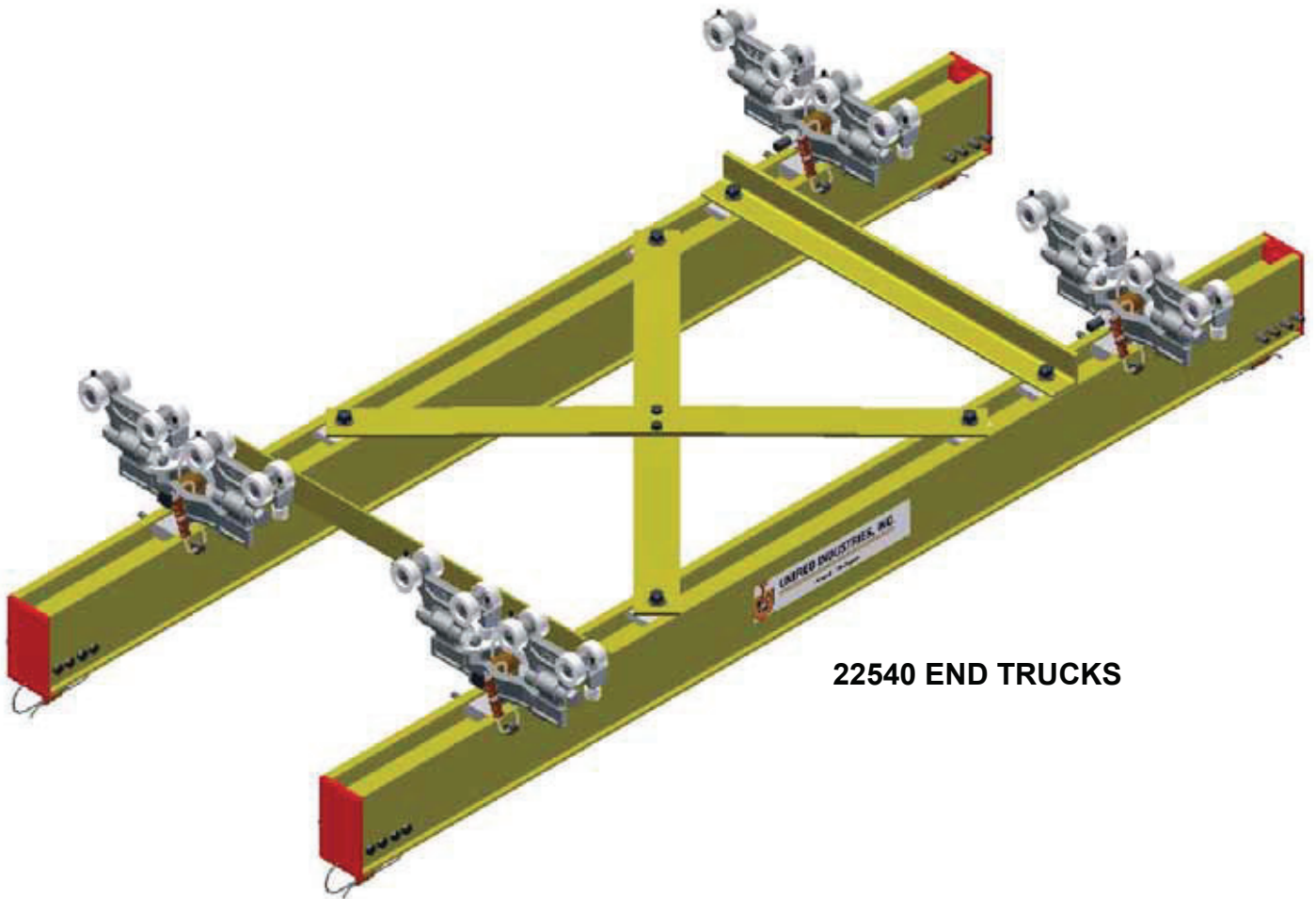


22521 SINGLE END TRUCK



22540 DOUBLE END TRUCK

- Standard overhang each end 12" (305mm)
- Longer overhangs consult Factory
- Paint color-specify when ordering
- Standard double end stops

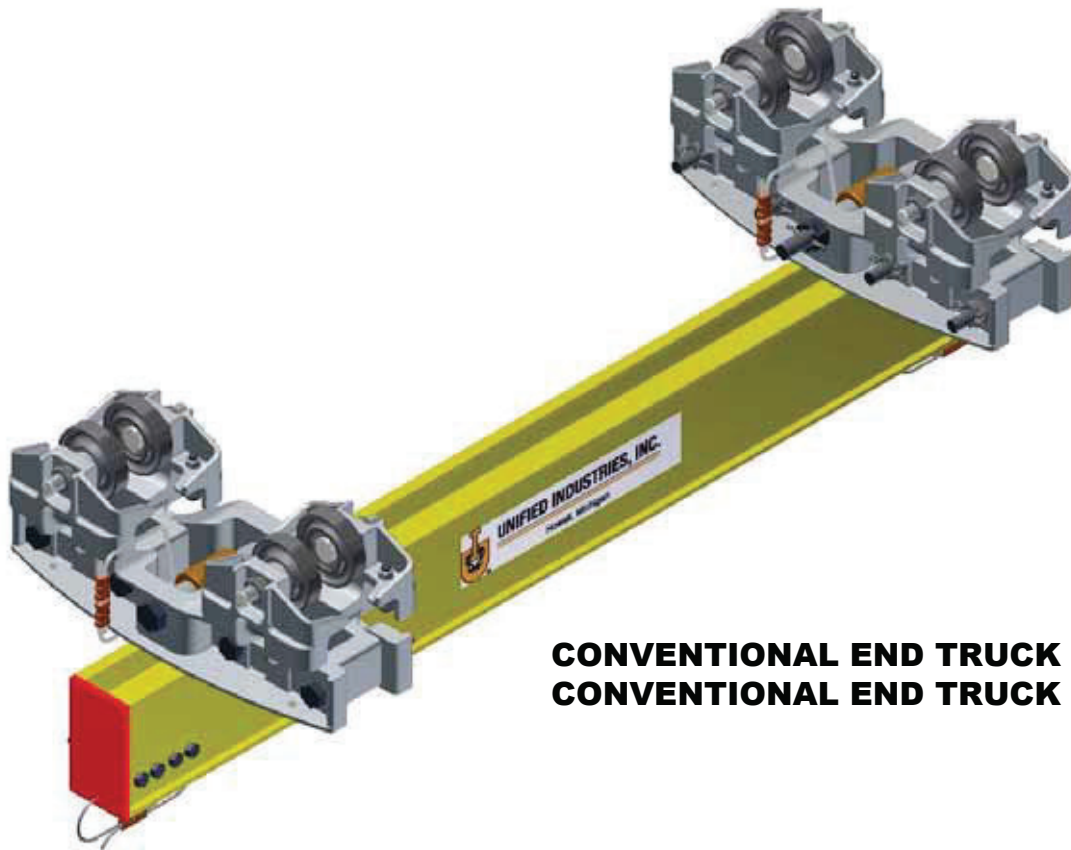


22540 END TRUCKS

Unified ETA-5 double girder bridge cranes are used for suspending hoists, nut runners, indexing fixtures, mechanical grabs, etc.

ETA-5 double girder bridge cranes consist of four single or dual trolley end truck assemblies supporting ETA-5 extruded aluminum bridge girders. Bridge girder has bolted polyurethane end caps at each end, completing assembly.

- Diagonal bracing to prohibit articulation
- 12" (305mm) standard overhang
- Air line festoon brackets and kits available.
- Festoon trolleys available
- Paint color - specify when ordering
- Double end stops standard
- Longer overhangs consult factory



CONVENTIONAL END TRUCK (W/O KICK-UP)
CONVENTIONAL END TRUCK (KICK-UP)

Designed Specifically For Existing Runway Systems

- **22557** end truck assembly MBC-500-3-325 without kickup wheel for operation on 3.25 or 3.33 flat rail. Rated Load 1100 lbs. (500kg)
- **22558** end truck assembly MBC-500-3-333 without kickup wheel for operation on S6x12.5. Rated Load 1100 lbs. (500kg)
- **22559** end truck assembly MBC-500-3-4-266 without kickup wheel for operation on S4x7.7. Rated Load 1100 lbs. (500kg)
- **22574** end truck assembly MBC-500-3-325 with kickup wheel for operation on 3.25 or 3.33 flat rail. Rated Load 1100 lbs. (500kg)
- **22575** end truck assembly MBC-500-3-333 with kickup wheel for operation on S6x12.5. Rated Load 1100 lbs. (500kg)
- **22576** end truck assembly MBC-500-3-4-266 without kickup wheel for operation on S4x7.7. Rated Load 1100 lbs. (500kg)
- Self aligning end trucks
- High tensile almag alloy castings make up end truck assembly
- Counter thrust trolleys for countering extended loads are available
- Low inertia: 1-2% of load
- Paint color-specify when ordering
- Double end stops standard
- Optional rigid mount bracket
- Longer overhangs consult factory



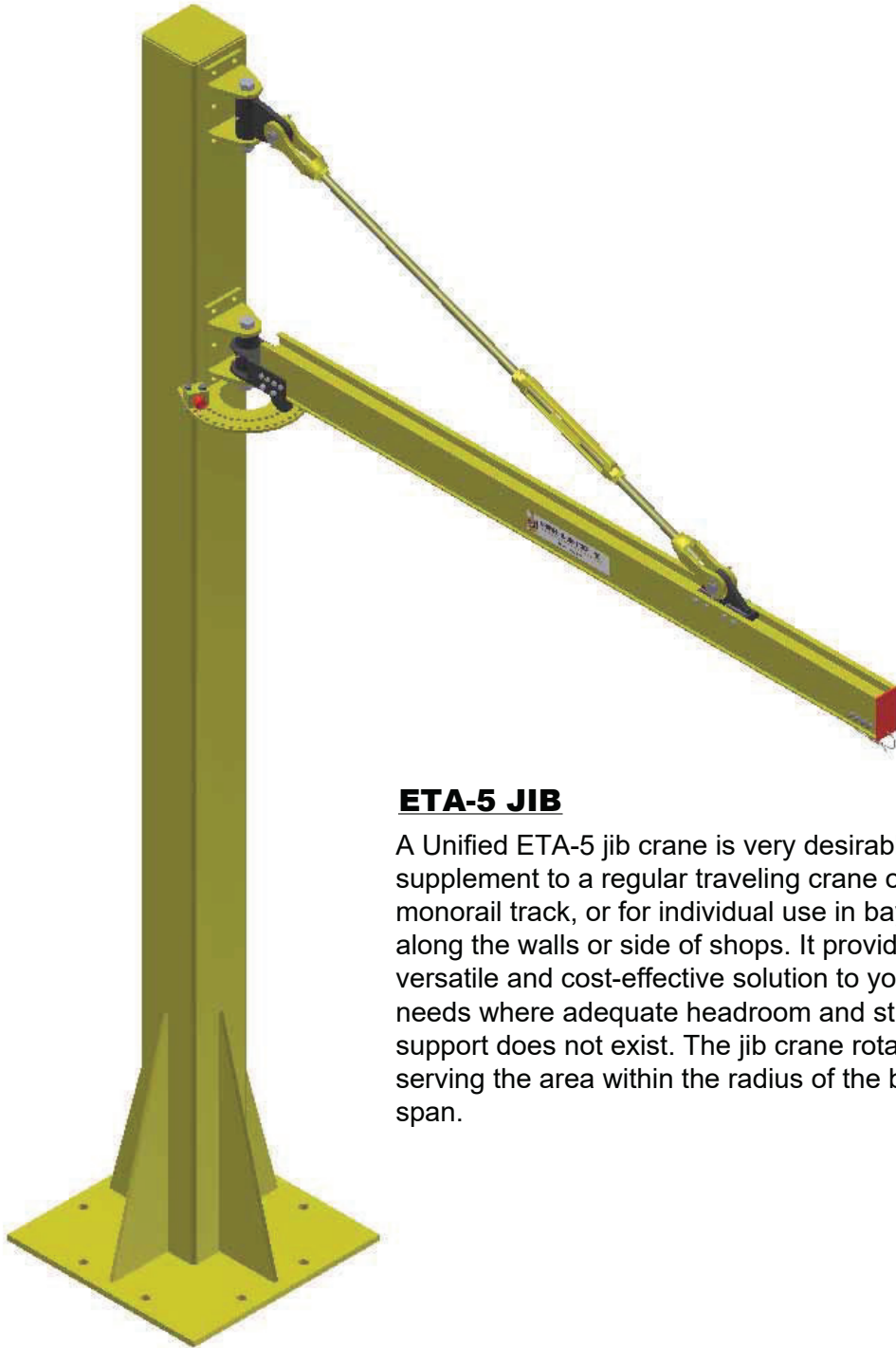
**22610 ETA-5 ARTICULATING
LOW HEADROOM END TRUCK**

**22615 ETA-5 RIGID
LOW HEADROOM END TRUCK**

Unified ETA-5 single girder low headroom bridge crane consists of two end truck assemblies supporting an aluminum enclosed bridge girder. Bridge girder and runway girder are held at the same elevation with bolted construction and a neoprene bumper at each end completing the assembly.

Unified ETA-5 single girder bridge cranes for rated loads to 1100 lbs. (500kg)

- Increased headroom in low areas
- Paint color - specify when ordering
- Air brackets and kits available
- Small tool, festoon trolley or tag line slider available.
- Overhangs are not available

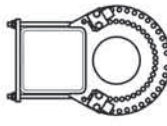


ETA-5 JIB

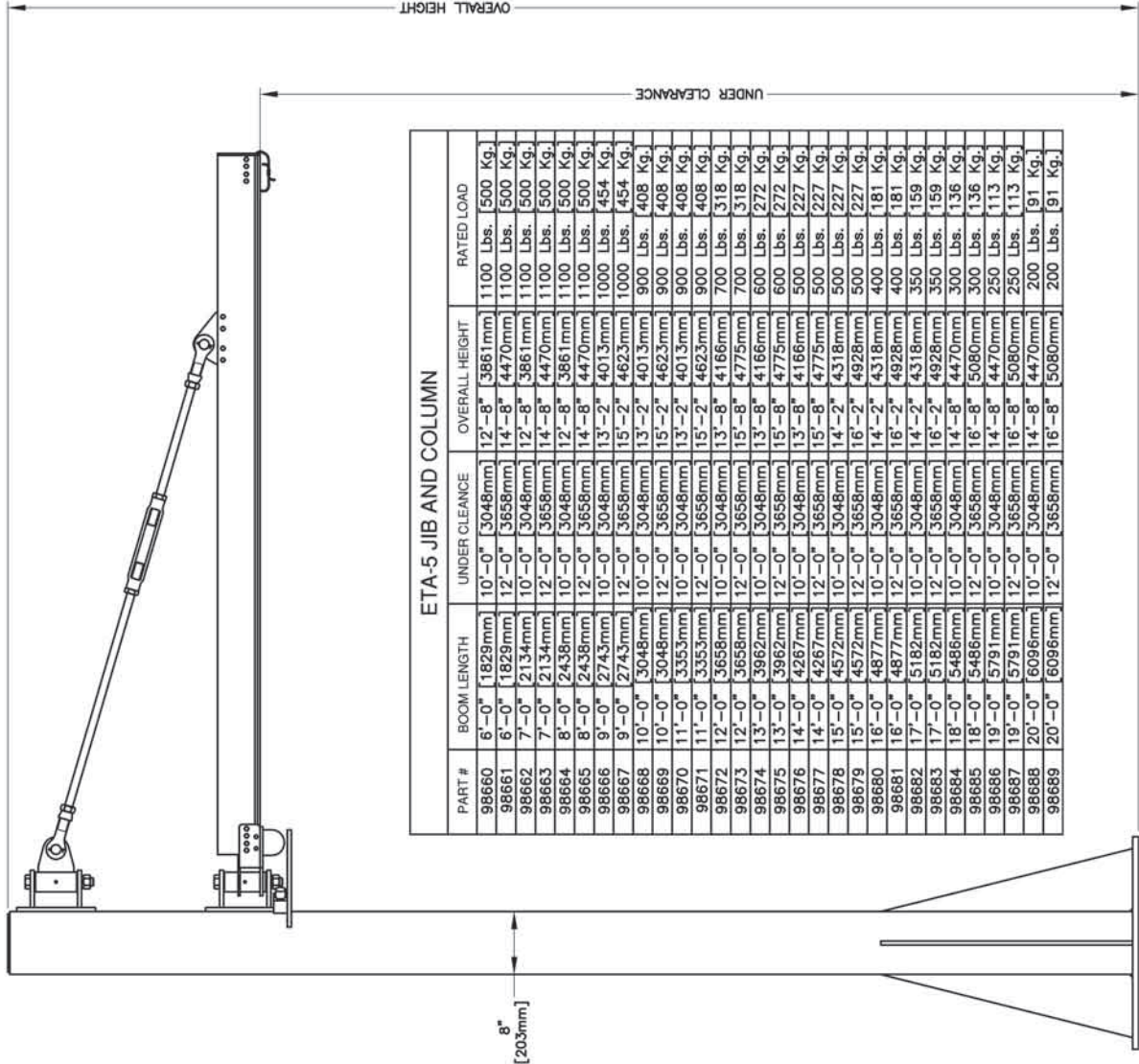
A Unified ETA-5 jib crane is very desirable as a supplement to a regular traveling crane or monorail track, or for individual use in bays and along the walls or side of shops. It provides a versatile and cost-effective solution to your crane needs where adequate headroom and structural support does not exist. The jib crane rotates 220° serving the area within the radius of the beam's span.



98540 8" JIB COLUMN INDEX STOP ASSEMBLY

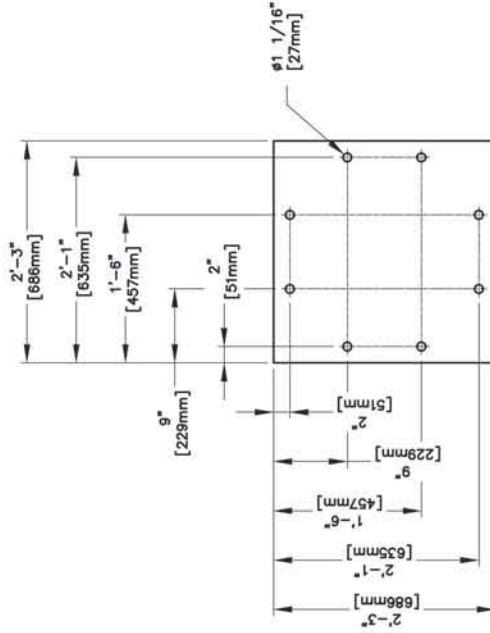


98541 8" BOLTED JIB COLUMN INDEX STOP ASSEMBLY



ETA-5 JIB AND COLUMN

PART #	BOOM LENGTH	UNDER CLEARANCE	OVERALL HEIGHT	RATED LOAD
98660	6'-0" [1829mm]	10'-0" [3048mm]	12'-8" [3861mm]	1100 Lbs. 500 Kg.
98661	6'-0" [1829mm]	12'-0" [3658mm]	14'-8" [4470mm]	1100 Lbs. 500 Kg.
98662	7'-0" [2134mm]	10'-0" [3048mm]	12'-8" [3861mm]	1100 Lbs. 500 Kg.
98663	7'-0" [2134mm]	12'-0" [3658mm]	14'-8" [4470mm]	1100 Lbs. 500 Kg.
98664	8'-0" [2438mm]	10'-0" [3048mm]	12'-8" [3861mm]	1100 Lbs. 500 Kg.
98665	8'-0" [2438mm]	12'-0" [3658mm]	14'-8" [4470mm]	1100 Lbs. 500 Kg.
98666	9'-0" [2743mm]	10'-0" [3048mm]	13'-2" [4013mm]	1000 Lbs. 454 Kg.
98667	9'-0" [2743mm]	12'-0" [3658mm]	15'-2" [4623mm]	1000 Lbs. 454 Kg.
98668	10'-0" [3048mm]	10'-0" [3048mm]	13'-2" [4013mm]	900 Lbs. 408 Kg.
98669	10'-0" [3048mm]	12'-0" [3658mm]	15'-2" [4623mm]	900 Lbs. 408 Kg.
98670	11'-0" [3353mm]	10'-0" [3048mm]	13'-2" [4013mm]	900 Lbs. 408 Kg.
98671	11'-0" [3353mm]	12'-0" [3658mm]	15'-2" [4623mm]	900 Lbs. 408 Kg.
98672	12'-0" [3658mm]	10'-0" [3048mm]	13'-8" [4166mm]	700 Lbs. 318 Kg.
98673	12'-0" [3658mm]	12'-0" [3658mm]	15'-8" [4775mm]	700 Lbs. 318 Kg.
98674	13'-0" [3962mm]	10'-0" [3048mm]	13'-8" [4166mm]	600 Lbs. 272 Kg.
98675	13'-0" [3962mm]	12'-0" [3658mm]	15'-8" [4775mm]	600 Lbs. 272 Kg.
98676	14'-0" [4267mm]	10'-0" [3048mm]	13'-8" [4166mm]	500 Lbs. 227 Kg.
98677	14'-0" [4267mm]	12'-0" [3658mm]	15'-8" [4775mm]	500 Lbs. 227 Kg.
98678	15'-0" [4572mm]	10'-0" [3048mm]	14'-2" [4318mm]	500 Lbs. 227 Kg.
98679	15'-0" [4572mm]	12'-0" [3658mm]	16'-2" [4928mm]	500 Lbs. 227 Kg.
98680	16'-0" [4877mm]	10'-0" [3048mm]	14'-2" [4318mm]	400 Lbs. 181 Kg.
98681	16'-0" [4877mm]	12'-0" [3658mm]	16'-2" [4928mm]	400 Lbs. 181 Kg.
98682	17'-0" [5182mm]	10'-0" [3048mm]	14'-2" [4318mm]	350 Lbs. 159 Kg.
98683	17'-0" [5182mm]	12'-0" [3658mm]	16'-2" [4928mm]	350 Lbs. 159 Kg.
98684	18'-0" [5486mm]	10'-0" [3048mm]	14'-8" [4470mm]	300 Lbs. 136 Kg.
98685	18'-0" [5486mm]	12'-0" [3658mm]	16'-8" [5080mm]	300 Lbs. 136 Kg.
98686	19'-0" [5791mm]	10'-0" [3048mm]	14'-8" [4470mm]	250 Lbs. 113 Kg.
98687	19'-0" [5791mm]	12'-0" [3658mm]	16'-8" [5080mm]	250 Lbs. 113 Kg.
98688	20'-0" [6096mm]	10'-0" [3048mm]	14'-8" [4470mm]	200 Lbs. 91 Kg.
98689	20'-0" [6096mm]	12'-0" [3658mm]	16'-8" [5080mm]	200 Lbs. 91 Kg.



BASE PLATE

TEST LOAD SHALL NOT BE MORE THAN 120% OF THE RATED LOAD UNLESS RECOMMENDED BY THE MANUFACTURER. COLUMN SHALL NOT BE LOADED BEYOND ITS RATED LOAD CAPACITY EXCEPT FOR TEST PURPOSES.

NOTES:
 1. CONSULT FACTORY FOR UNDERCLEARANCES MORE THAN 12'-0" [3658mm].
 2. THE MINIMUM ANCHOR REQUIREMENT IS A 43/4" [20mm] WEDGE TYPE ANCHOR BOLT WITH 3 1/4" [83mm] STANDARD EMBEDMENT IN 6" [152mm] 3000 PSI [2070 N/cm²] CONCRETE.

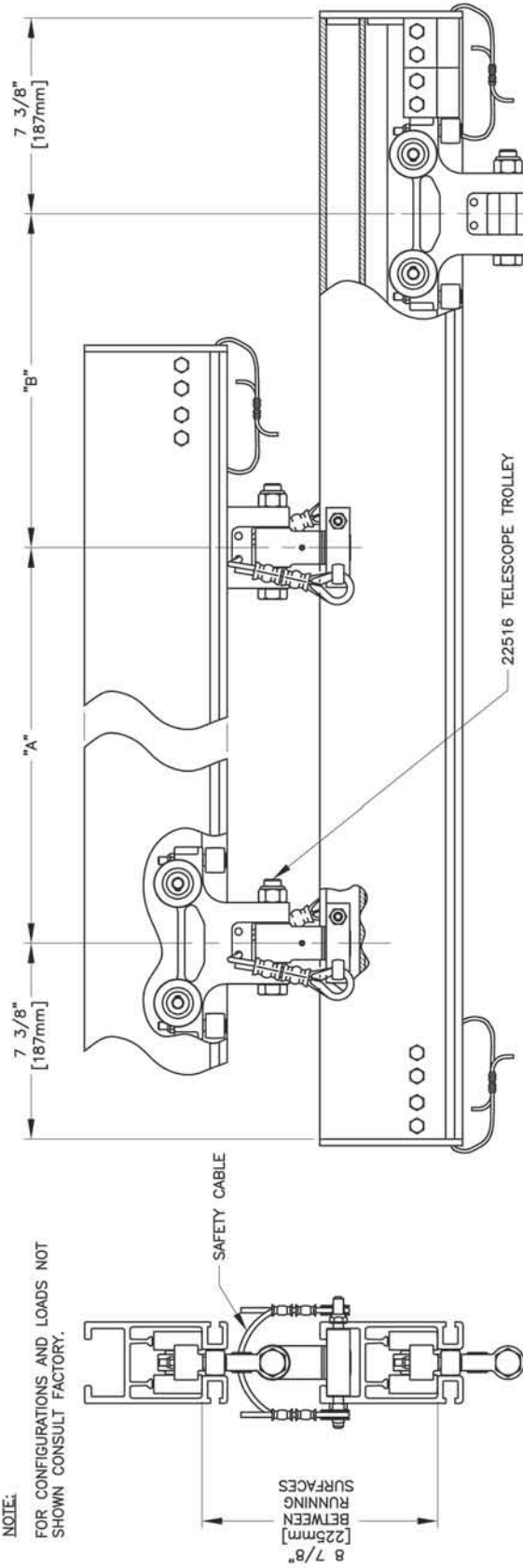
Note: Rated Loads above 550lbs require a Dual Hoist Trolley

ETA-5 TELESCOPING UNITS WITH ETA-4/5 TROLLEYS

RATED LOAD: BASED UPON STATIC LOAD TESTING AND CARRYING CAPACITY OF HIGH IMPACT WHEELS. TEST LOAD SHALL NOT BE MORE THAN 125% OF THE RATED LOAD UNLESS RECOMMENDED BY THE MANUFACTURER. CRANE SHALL NOT BE LOADED BEYOND ITS RATED LOAD CAPACITY EXCEPT FOR TEST PURPOSES.

NOTE:

FOR CONFIGURATIONS AND LOADS NOT SHOWN CONSULT FACTORY.



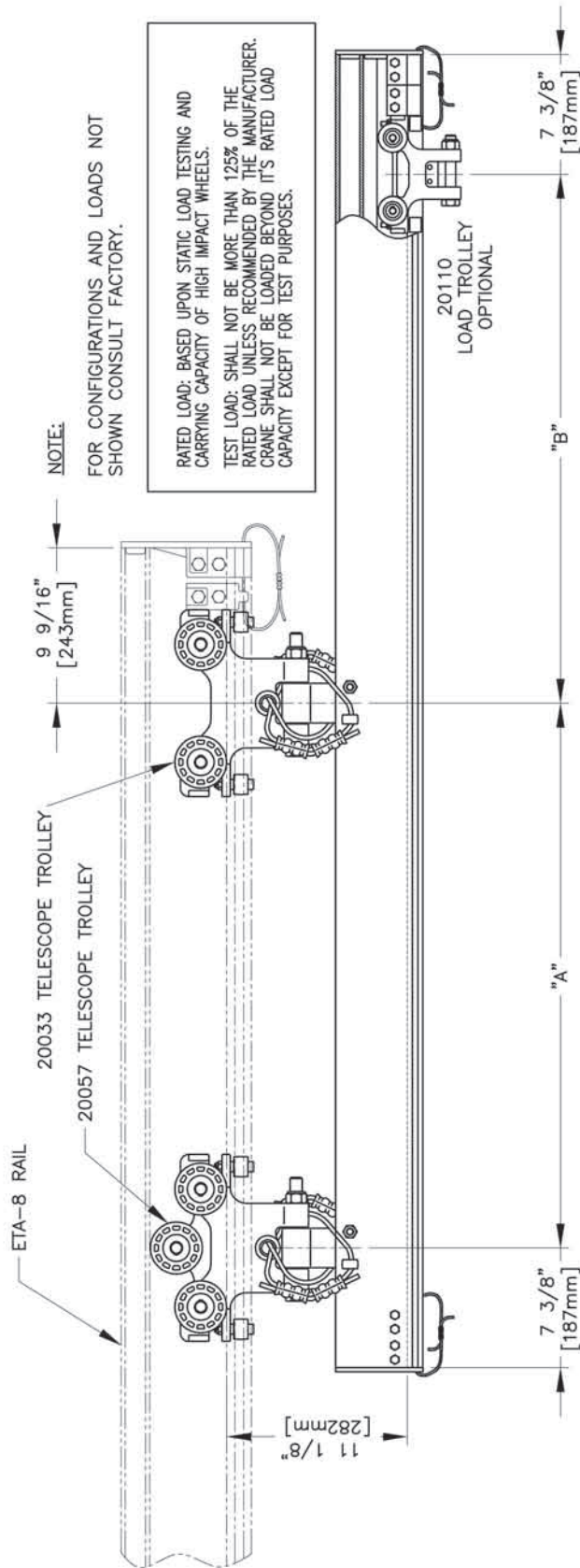
ETA-5 TELESCOPE UNIT WITH 22516 TELESCOPE TROLLEYS

"A"	"B"	RATED LOAD		"A"	"B"	RATED LOAD	
		1/250	1/450			1/250	1/450
18	24 in. 36 in. 48 in.	200 lbs. 150 lbs. 120 lbs.	200 lbs. 150 lbs. 120 lbs.	18	24 in. 36 in. 48 in.	285 lbs. 235 lbs. 185 lbs.	285 lbs. 235 lbs. 185 lbs.
	INCH			30	36 in. 48 in.	210 lbs. 175 lbs.	210 lbs. 175 lbs.
				INCH			

ETA-5 TELESCOPE UNIT WITH 22516 TELESCOPE TROLLEYS

"A"	"B"	RATED LOAD		"A"	"B"	RATED LOAD	
		L/250	L/450			L/250	L/450
457	610mm 914mm 1219mm	91 Kg. 68 Kg. 54 Kg.	91 Kg. 68 Kg. 54 Kg.	457	610mm 914mm 1219mm	120 Kg. 107 Kg. 84 Kg.	120 Kg. 107 Kg. 84 Kg.
	mm			762	914mm 1219mm	95 Kg. 79 Kg.	95 Kg. 79 Kg.
				mm			

ETA-5 TELESCOPING UNITS WITH ETA-8 TROLLEYS

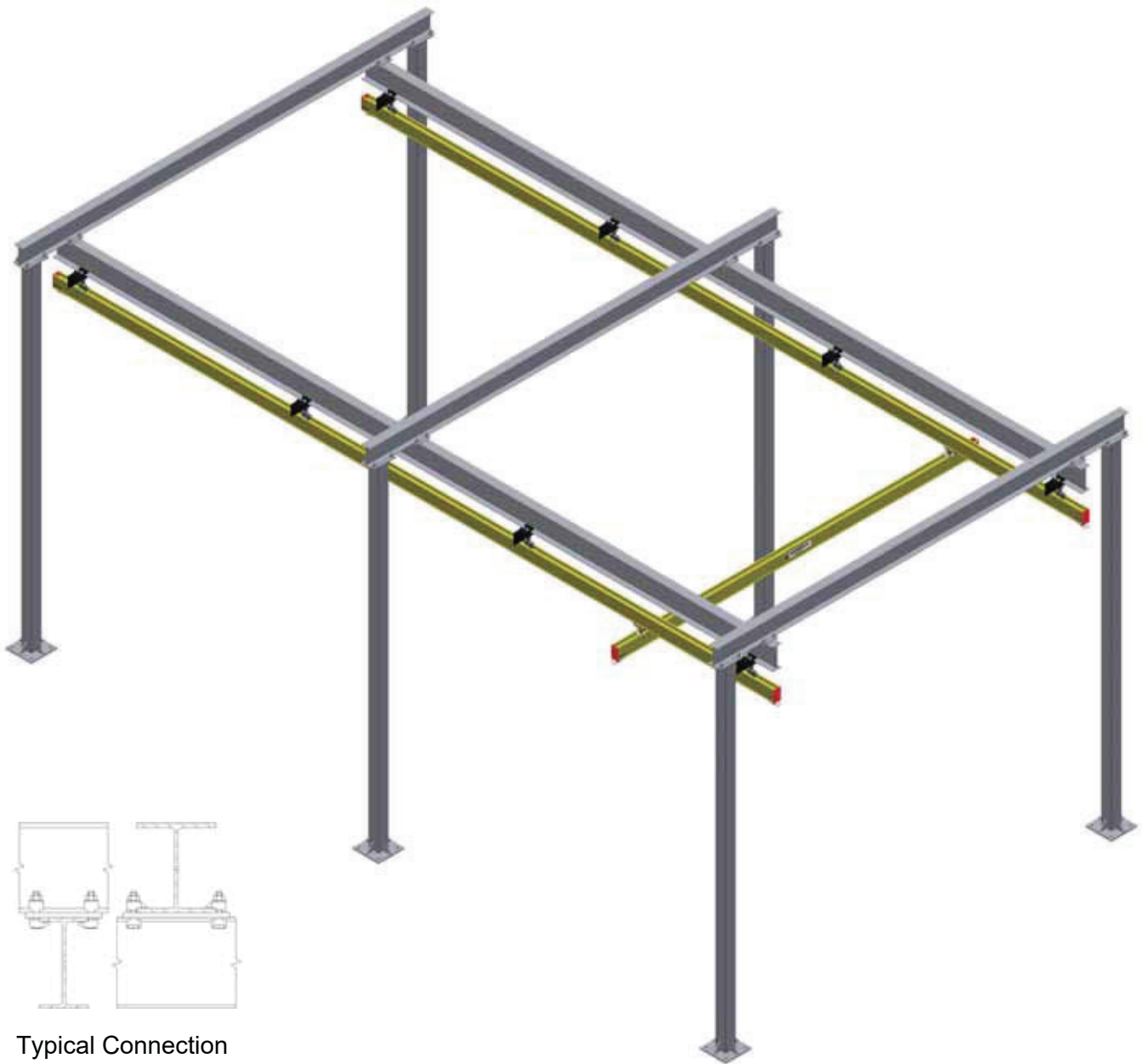


ETA-5 TELESCOPE UNIT WITH ETA-8 TROLLEYS

"A"	"B"	RATED LOAD		"A"	"B"	RATED LOAD		"A"	"B"	RATED LOAD	
		1/250	1/450			1/250	1/450			1/250	1/450
18	24 in. 36 in. 48 in.	370 lbs. 240 lbs. 175 lbs.	1/450 370 lbs. 240 lbs.	30	24 in. 36 in. 48 in.	540 lbs. 435 lbs. 340 lbs.	1/450 540 lbs. 300 lbs.	36	24 in. 36 in. 48 in.	585 lbs. 480 lbs. 315 lbs.	1/450 500 lbs. 275 lbs.
INCH			INCH	INCH			INCH	INCH			INCH

ETA-5 TELESCOPE UNIT WITH ETA-8 TROLLEYS

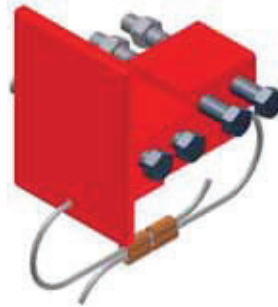
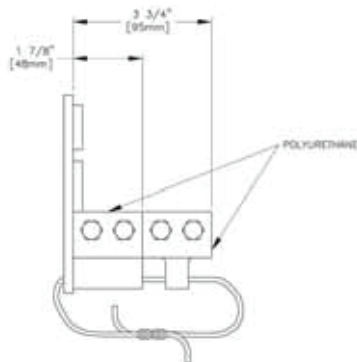
"A"	"B"	RATED LOAD		"A"	"B"	RATED LOAD		"A"	"B"	RATED LOAD	
		1/250	1/450			1/250	1/450			1/250	1/450
457	610mm 914mm 1219mm	168 Kg. 109 Kg. 79 Kg.	1/450 168 Kg. 109 Kg.	762	610mm 914mm 1219mm	245 Kg. 197 Kg. 154 Kg.	1/450 245 Kg. 136 Kg.	914	610mm 914mm 1219mm	265 Kg. 218 Kg. 143 Kg.	1/450 227 Kg. 125 Kg.
mm			mm	mm			mm	mm			mm



Typical Connection

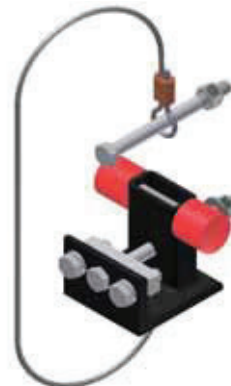
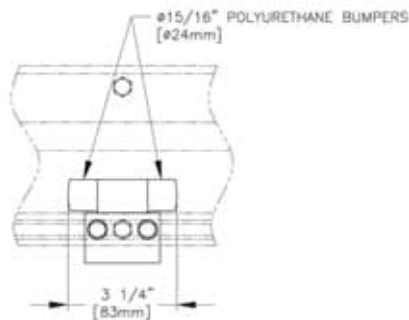
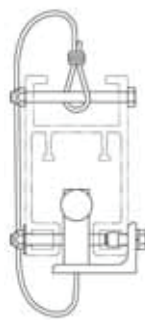
FREE STANDING FLOOR SUPPORT STRUCTURES

- Designed & engineered to each application.
- Floor supports do not require bracing to existing structures.
- P.E. certification optional.
- Paint to customer color specification.



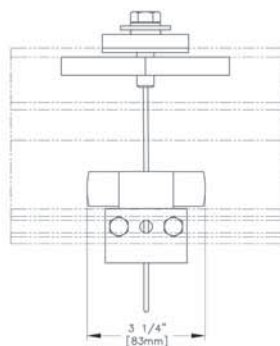
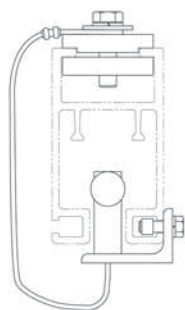
25194 ETA-5 POLY DOUBLE END CAP ASSEMBLY

- **Double End Stops for added safety are standard**
- **For Single Stop replacement parts see ETA Parts Manual**
- **Weight: 1 lb (.45kg)**



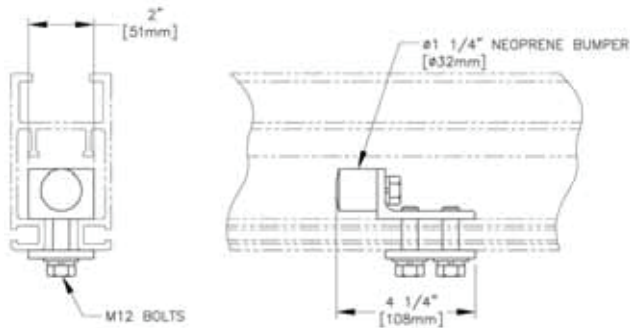
25575 ETA-4/5 INSERTABLE MID-RAIL STOP ASSEMBLY

- **Weight: 1 lb (.45kg)**



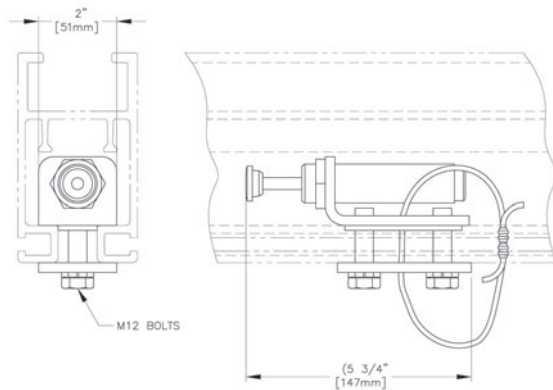
25577 ETA-4/5 ADJUSTABLE INSERTABLE MID-RAIL STOP ASSEMBLY

- **Weight: 2 lbs. (.90kg)**



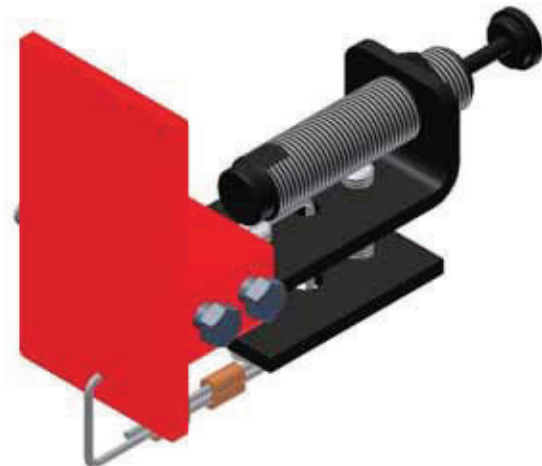
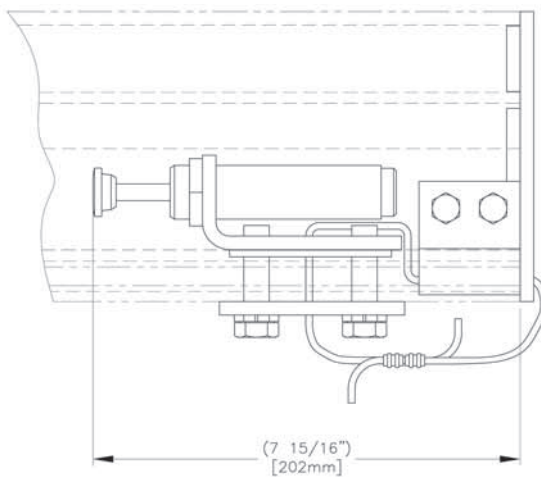
25580 ETA-4/5 MID-STOP ASSEMBLY

■ **Weight: 1 lb. (.45kg)**



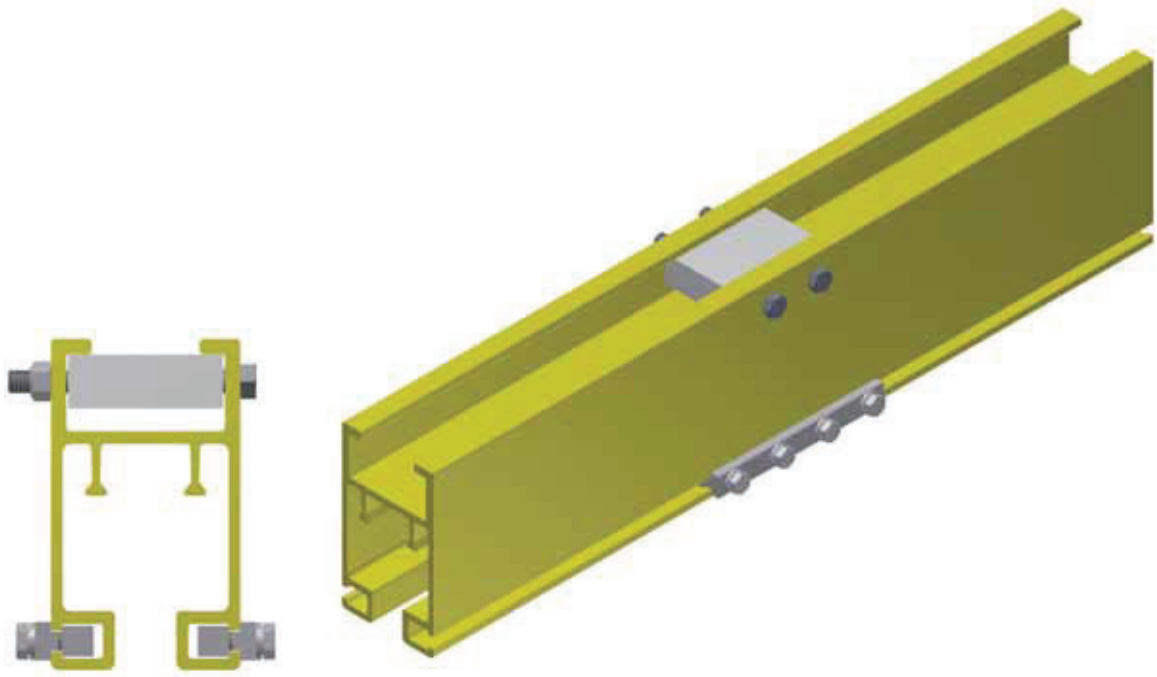
25185 ETA-4/5 POSITION STOP SHOCK ABSORBER ASSEMBLY

■ **Weight: 2 lbs. (.90kg)**



25134 ETA-5 END STOP SHOCK ABSORBER ASSEMBLY

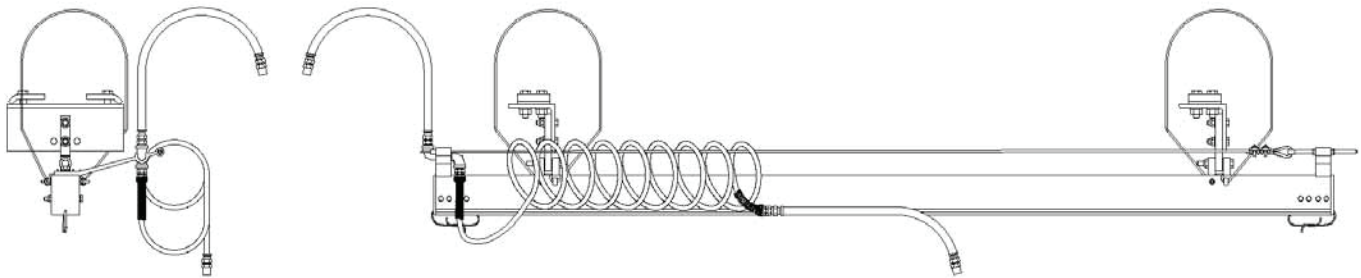
■ **Weight: 3 lbs. (1.3kg)**



25514 ETA-4/5 SPLICE ASSEMBLY

28050 ETA-4/5 BOLTED SPLICE BAR KIT (DOES NOT INCLUDE TOP BLOCK)

Note: All splices MUST be within 1' of a Hanger



RUNWAY AIR FESTOONING

RUNWAY AIR FESTOON KIT

Features

- Two Blue Whip Hoses x 36" (914mm)
- Blue Coiled Hose
- Two ETA Festoon Brackets
- 1/4" Nylon Coated Cable Assembly

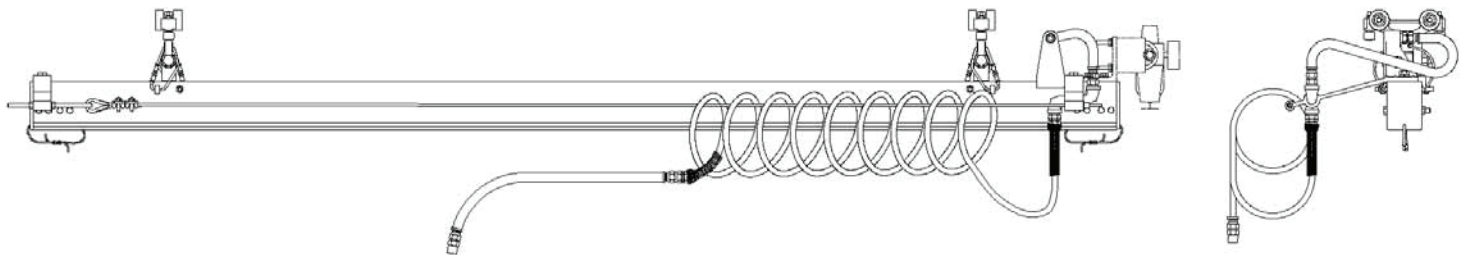
Part Number

■ **1/2" Hose Kits**

- **29105** 5'-0" (1.5m) Long Runway Air Festoon Kit
- **29110** 10'-0" (3.0m) Long Runway Air Festoon Kit
- **29115** 15'-0" (4.5m) Long Runway Air Festoon Kit
- **29120** 20'-0" (6.0m) Long Runway Air Festoon Kit
- **29125** 25'-0" (7.6m) Long Runway Air Festoon Kit
- **29130** 30'-0" (9.1m) Long Runway Air Festoon Kit
- **29135** 35'-0" (10.6m) Long Runway Air Festoon Kit
- **29140** 40'-0" (12.1m) Long Runway Air Festoon Kit
- **29145** 45'-0" (13.7m) Long Runway Air Festoon Kit
- **29150** 50'-0" (15.2m) Long Runway Air Festoon Kit
- **29155** 55'-0" (16.7m) Long Runway Air Festoon Kit
- **29160** 60'-0" (18.2m) Long Runway Air Festoon Kit
- **29165** 65'-0" (19.8m) Long Runway Air Festoon Kit
- **29170** 70'-0" (21.3m) Long Runway Air Festoon Kit
- **29175** 75'-0" (22.8m) Long Runway Air Festoon Kit
- **29180** 80'-0" (24.3m) Long Runway Air Festoon Kit
- **29185** 85'-0" (25.9m) Long Runway Air Festoon Kit
- **29190** 90'-0" (27.4m) Long Runway Air Festoon Kit
- **29195** 95'-0" (28.9m) Long Runway Air Festoon Kit
- **29200** 100'-0" (30.4m) Long Runway Air Festoon Kit

■ **3/4" Hose Kits**

- **29205** 5'-0" (1.5m) Long Runway Air Festoon Kit
- **29210** 10'-0" (3.0m) Long Runway Air Festoon Kit
- **29215** 15'-0" (4.5m) Long Runway Air Festoon Kit
- **29220** 20'-0" (6.0m) Long Runway Air Festoon Kit
- **29225** 25'-0" (7.6m) Long Runway Air Festoon Kit
- **29230** 30'-0" (9.1m) Long Runway Air Festoon Kit
- **29235** 35'-0" (10.6m) Long Runway Air Festoon Kit
- **29240** 40'-0" (12.1m) Long Runway Air Festoon Kit
- **29245** 45'-0" (13.7m) Long Runway Air Festoon Kit
- **29250** 50'-0" (15.2m) Long Runway Air Festoon Kit
- **29255** 55'-0" (16.7m) Long Runway Air Festoon Kit
- **29260** 60'-0" (18.2m) Long Runway Air Festoon Kit
- **29265** 65'-0" (19.8m) Long Runway Air Festoon Kit
- **29270** 70'-0" (21.3m) Long Runway Air Festoon Kit
- **29275** 75'-0" (22.8m) Long Runway Air Festoon Kit
- **29280** 80'-0" (24.3m) Long Runway Air Festoon Kit
- **29285** 85'-0" (25.9m) Long Runway Air Festoon Kit
- **29290** 90'-0" (27.4m) Long Runway Air Festoon Kit
- **29295** 95'-0" (28.9m) Long Runway Air Festoon Kit
- **29300** 100'-0" (30.4m) Long Runway Air Festoon Kit



BRIDGE AIR FESTOONING

BRIDGE AIR FESTOON KIT

Features

- Two Blue Whip Hoses x 36" (914mm)
- Blue Coiled Hose
- Two ETA Festoon Brackets
- One Air Hose Connector Bracket
- 1/4" Nylon Coated Cable with Hardware

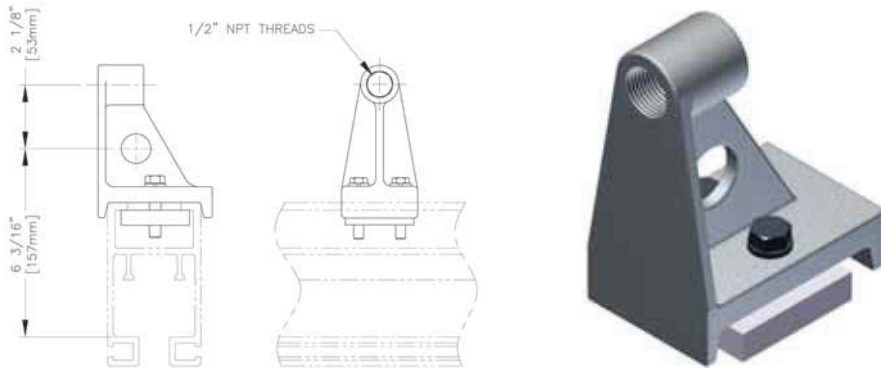
Options

- FR Assembly
- FRL Assembly
- Lockout

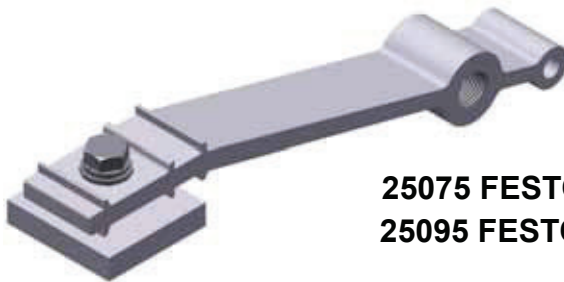
Part Number

- **29305** 5'-0" (1.5m) Long 1/2" Bridge Air Festoon Kit
- **29310** 10'-0" (3.0m) Long 1/2" Bridge Air Festoon Kit
- **29315** 15'-0" (4.5m) Long 1/2" Bridge Air Festoon Kit
- **29320** 20'-0" (6.0m) Long 1/2" Bridge Air Festoon Kit
- **29325** 25'-0" (7.6m) Long 1/2" Bridge Air Festoon Kit
- **29330** 30'-0" (9.1m) Long 1/2" Bridge Air Festoon Kit
- **29335** 35'-0" (10.6m) Long 1/2" Bridge Air Festoon Kit
- **29340** 40'-0" (12.1m) Long 1/2" Bridge Air Festoon Kit

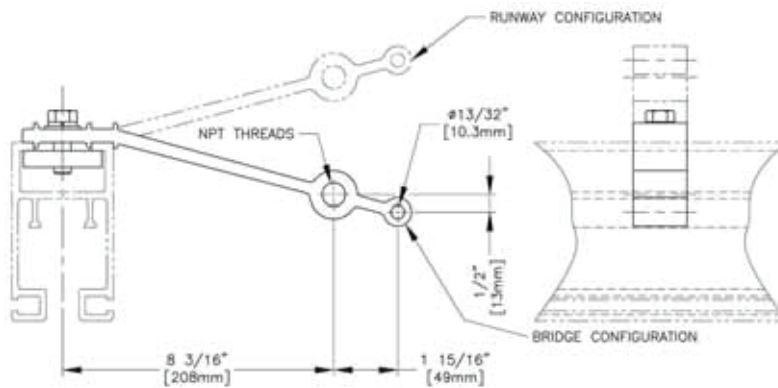
- **29405** 5'-0" (1.5m) Long 3/4" Bridge Air Festoon Kit
- **29410** 10'-0" (3.0m) Long 3/4" Bridge Air Festoon Kit
- **29415** 15'-0" (4.5m) Long 3/4" Bridge Air Festoon Kit
- **29420** 20'-0" (6.0m) Long 3/4" Bridge Air Festoon Kit
- **29425** 25'-0" (7.6m) Long 3/4" Bridge Air Festoon Kit
- **29430** 30'-0" (9.1m) Long 3/4" Bridge Air Festoon Kit
- **29435** 35'-0" (10.6m) Long 3/4" Bridge Air Festoon Kit
- **29440** 40'-0" (12.1m) Long 3/4" Bridge Air Festoon Kit



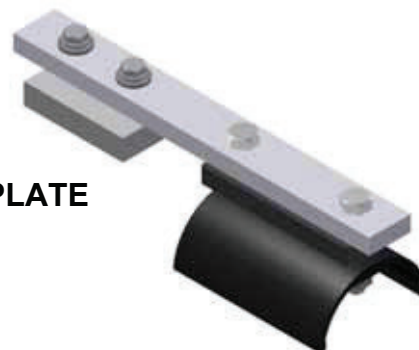
25070 AIR HOSE CONNECTOR BRACKET ASSEMBLY 1/2"
25065 AIR HOSE CONNECTOR BRACKET ASSEMBLY 3/4"



25075 FESTOON BRACKET ASSEMBLY 1/2" NPT
25095 FESTOON BRACKET ASSEMBLY 3/4" NPT



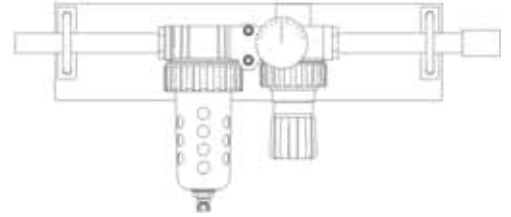
25815 ETA ELECTRIC FESTOON PLATE





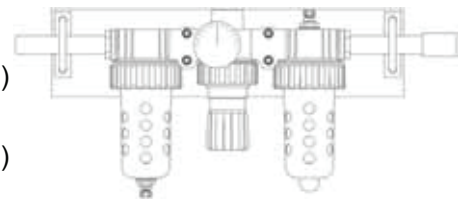
FILTER REGULATORS

- **25503** FR Assembly 1/2" Air Supply (Parker Standard)
- **25516** FR Assembly 1/2" Air Supply includes Manual Lockout (SMC Optional)
- **25517** FR Assembly 3/4" Air Supply (Parker Standard)
- **25518** FR Assembly 3/4" Air Supply includes Manual Lockout (SMC Optional)



FILTER REGULATOR LUBRICATORS

- **25500** FRL Assembly 1/2" Air Supply (Parker Standard)
- **25519** FRL Assembly 1/2" Air Supply includes Manual Lockout (SMC Optional)
- **25521** FRL Assembly 3/4" Air Supply (Parker Standard)
- **25522** FRL Assembly 3/4" Air Supply includes Manual Lockout (SMC Optional)



MANUAL LOCKOUTS

- **25523** Manual Lockout 1/2" Air Supply (Parker Standard)
- **25524** Manual Lockout 1/2" Air Supply (SMC Optional)
- **78107** Manual Lockout 3/4" Air Supply (Parker Standard)
- **78108** Manual Lockout 3/4" Air Supply (SMC Optional)



(Parker Standard)

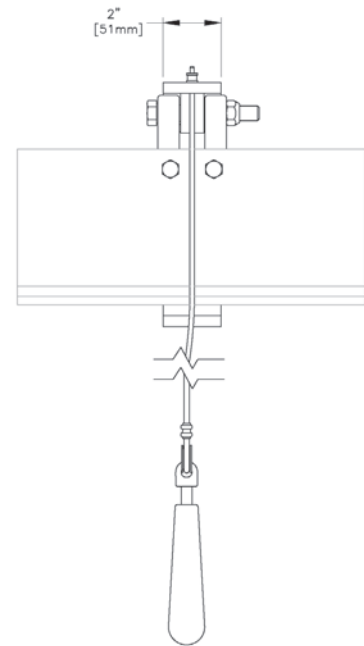
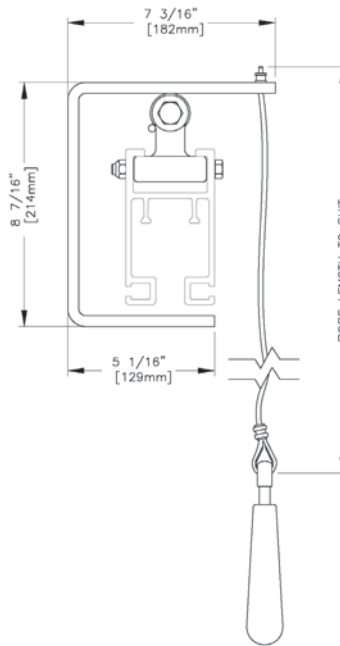
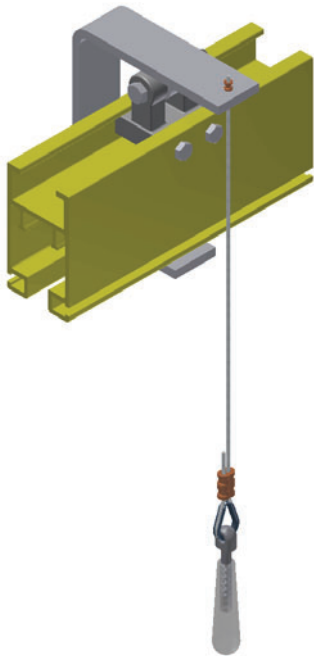


(SMC Optional)

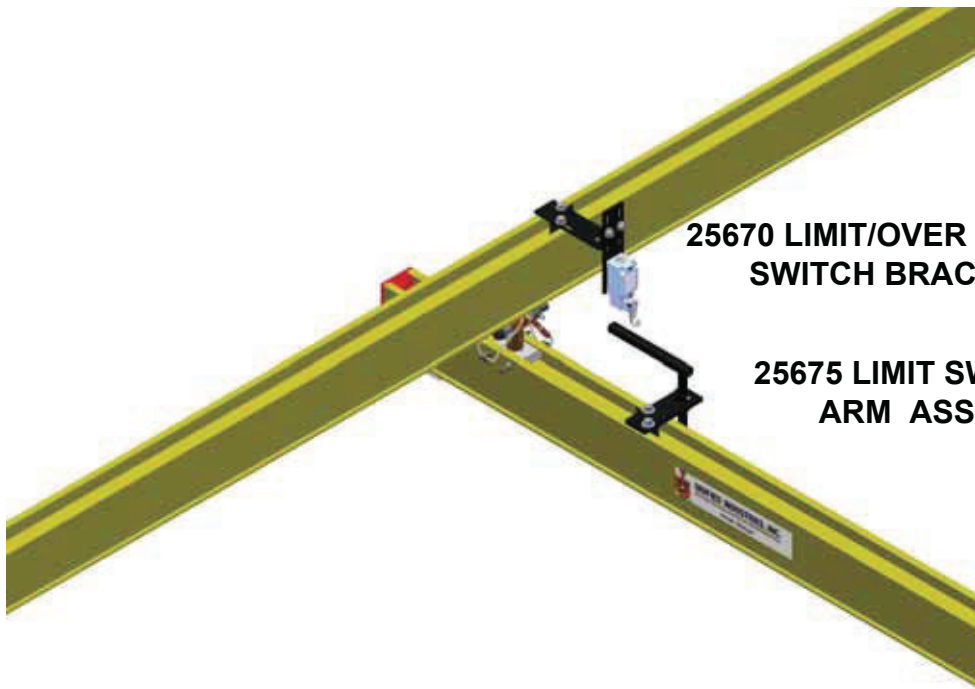
ELECTRIC JUNCTION BOX

- **25665** Electric Junction Box
- **67000** 4-Wire 12 ga. Flatwire Electric Cable (per foot)





27066 BYPASS ASSEMBLY



**25670 LIMIT/OVER TRAVEL
SWITCH BRACKET**

**25675 LIMIT SWITCH TRIP
ARM ASSEMBLY**

25677 OVER TRAVEL SWITCH ASSEMBLY

- Limit switch not included

UNIFIED DROP ANGLE KITS



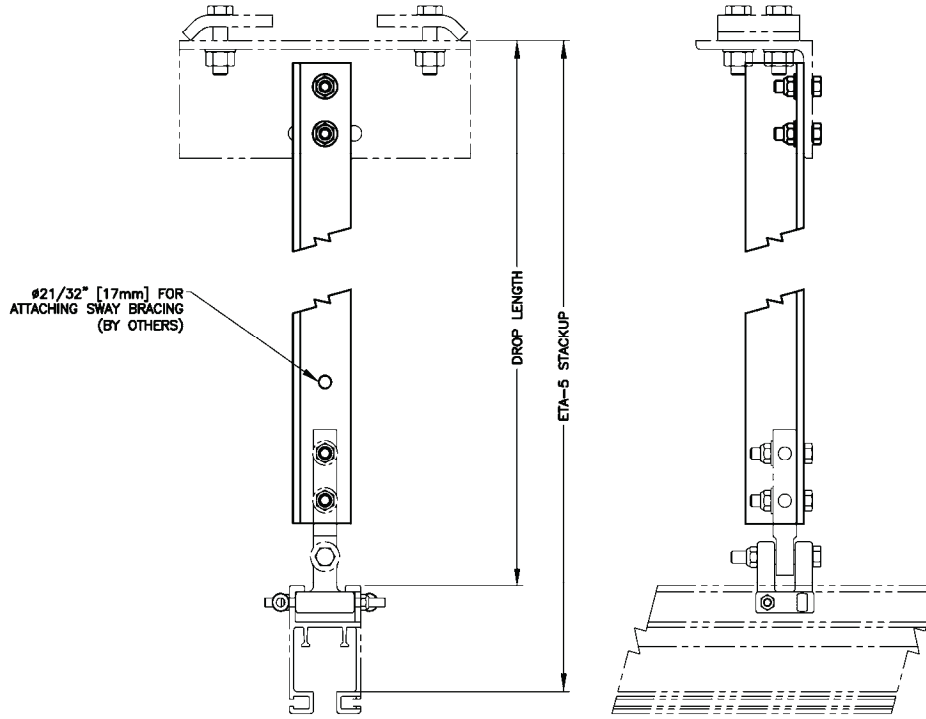
Beam Hanger

- Rated Load 2,000lbs (908kg)
- Beam Hanger sold separately
- Drop Angle Lengths 1'-2" (355mm) to 6'-0" (1829mm) require a cable hole
- Drop Angle Lengths 2'-0" (610mm) to 6'-0" (1829mm) require knee braces in both directions
- Knee Bracing by others
- Drops of 8" (203mm) to 11" (280mm) Consult Engineering



Adjustable Hanger

- Rated Load 1,500lbs (680kg)
- Adjustable Hanger sold separately
- Drop Angle Lengths 1'-2" (355mm) to 6'-0" (1829mm) require a cable hole
- Drop Angle Lengths 2'-0" (610mm) to 6'-0" (1829mm) require knee braces in both directions
- Knee Bracing by others
- Drops of 8" (203mm) to 11" (280mm) Consult Engineering

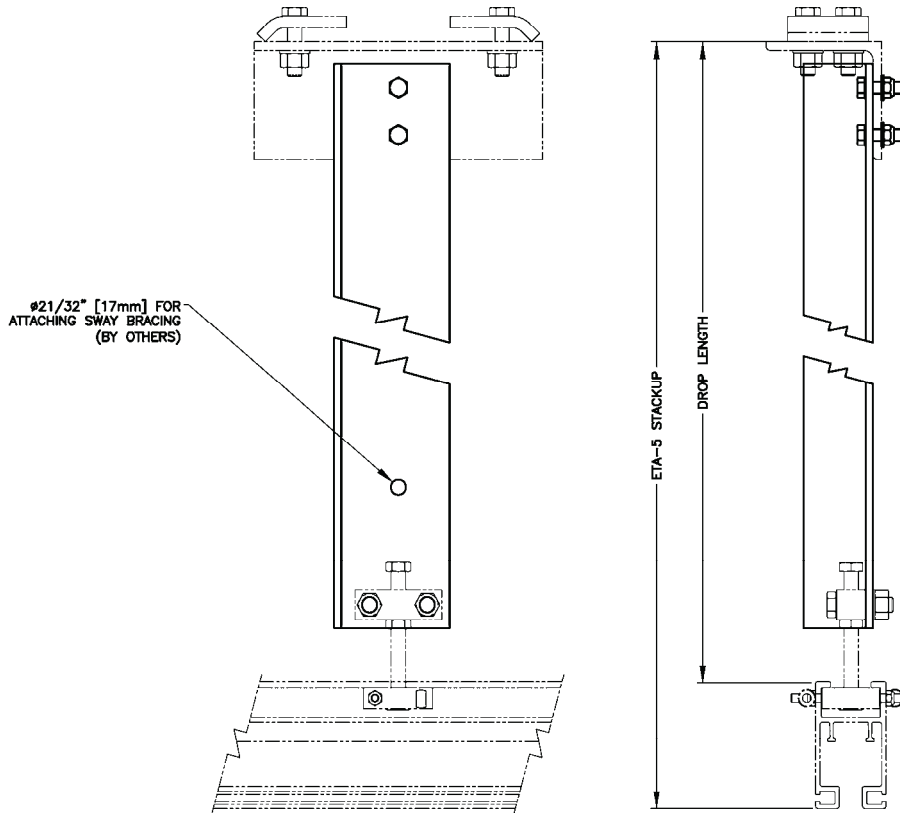


NOTE:
RATED LOAD 2000 LBS [907 Kg].

KIT PART #	DROP ANGLE PART #	DROP LENGTH		ETA-5 STACKUP	
28700	75101	1'-0"	305mm	1'-4 7/16"	418mm
		1'-1"	330mm	1'-5 7/16"	443mm
		1'-2"	356mm	1'-6 7/16"	468mm
		1'-3"	381mm	1'-7 7/16"	494mm
		1'-4"	406mm	1'-8 7/16"	519mm
		1'-5"	432mm	1'-9 7/16"	545mm
		1'-6"	457mm	1'-10 7/16"	570mm
		1'-7"	483mm	1'-11 7/16"	595mm
		1'-8"	508mm	2'-0 7/16"	621mm
		1'-9"	533mm	2'-1 7/16"	646mm
		1'-10"	559mm	2'-2 7/16"	672mm
		1'-11"	584mm	2'-3 7/16"	697mm
		2'-0"	610mm	2'-4 7/16"	722mm
		2'-1"	635mm	2'-5 7/16"	748mm
28701	75102	2'-2"	660mm	2'-6 7/16"	773mm
		2'-3"	686mm	2'-7 7/16"	799mm
		2'-4"	711mm	2'-8 7/16"	824mm
		2'-5"	737mm	2'-9 7/16"	849mm
		2'-6"	762mm	2'-10 7/16"	875mm
		2'-7"	787mm	2'-11 7/16"	900mm
		2'-8"	813mm	3'-0 7/16"	926mm
		2'-9"	838mm	3'-1 7/16"	951mm
		2'-10"	864mm	3'-2 7/16"	976mm
		2'-11"	889mm	3'-3 7/16"	1002mm
		3'-0"	914mm	3'-4 7/16"	1027mm
		3'-1"	940mm	3'-5 7/16"	1053mm
		3'-2"	965mm	3'-6 7/16"	1078mm
		3'-3"	991mm	3'-7 7/16"	1103mm
28702	75103	3'-4"	1016mm	3'-8 7/16"	1129mm
		3'-5"	1041mm	3'-9 7/16"	1154mm
		3'-6"	1067mm	3'-10 7/16"	1180mm

KIT PART #	DROP ANGLE PART #	DROP LENGTH		ETA-5 STACKUP	
28702	75103	3'-7"	1092mm	3'-11 7/16"	1205mm
		3'-8"	1118mm	4'-0 7/16"	1230mm
		3'-9"	1143mm	4'-1 7/16"	1256mm
		3'-10"	1168mm	4'-2 7/16"	1281mm
		3'-11"	1194mm	4'-3 7/16"	1307mm
		4'-0"	1219mm	4'-4 7/16"	1332mm
28703	75104	4'-1"	1245mm	4'-5 7/16"	1357mm
		4'-2"	1270mm	4'-6 7/16"	1383mm
		4'-3"	1295mm	4'-7 7/16"	1408mm
		4'-4"	1321mm	4'-8 7/16"	1434mm
		4'-5"	1346mm	4'-9 7/16"	1459mm
		4'-6"	1372mm	4'-10 7/16"	1484mm
		4'-7"	1397mm	4'-11 7/16"	1508mm
		4'-8"	1422mm	5'-0 7/16"	1535mm
		4'-9"	1448mm	5'-1 7/16"	1561mm
		4'-10"	1473mm	5'-2 7/16"	1586mm
28704	75105	4'-11"	1499mm	5'-3 7/16"	1611mm
		5'-0"	1524mm	5'-4 7/16"	1637mm
		5'-1"	1549mm	5'-5 7/16"	1662mm
		5'-2"	1575mm	5'-6 7/16"	1688mm
		5'-3"	1600mm	5'-7 7/16"	1713mm
		5'-4"	1626mm	5'-8 7/16"	1738mm
		5'-5"	1651mm	5'-9 7/16"	1764mm
		5'-6"	1676mm	5'-10 7/16"	1789mm
		5'-7"	1702mm	5'-11 7/16"	1815mm
		5'-8"	1727mm	6'-0 7/16"	1840mm
		5'-9"	1753mm	6'-1 7/16"	1865mm
		5'-10"	1778mm	6'-2 7/16"	1891mm
		5'-11"	1803mm	6'-3 7/16"	1916mm
		6'-0"	1829mm	6'-4 7/16"	1942mm

*Beam Hanger with safety cable sold separately



NOTES:
 RATED LOAD 1500 LBS [680 Kg].

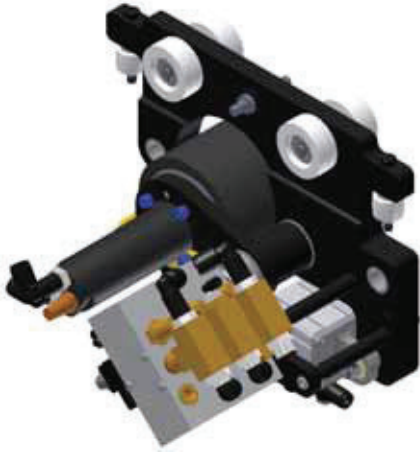
KIT PART #	DROP ANGLE PART #	DROP LENGTH		ETA-5 STACKUP			
28710	75111	9°	229mm	1'-1 7/16"	341mm		
		10°	254mm	1'-2 7/16"	367mm		
		11°	279mm	1'-3 7/16"	392mm		
		1'-0"	305mm	1'-4 7/16"	418mm		
28711	75112	1'-1"	330mm	1'-5 7/16"	443mm		
		1'-2"	356mm	1'-6 7/16"	468mm		
		1'-3"	381mm	1'-7 7/16"	494mm		
		1'-4"	406mm	1'-8 7/16"	519mm		
		1'-5"	432mm	1'-9 7/16"	545mm		
		1'-6"	457mm	1'-10 7/16"	570mm		
		1'-7"	483mm	1'-11 7/16"	595mm		
		1'-8"	508mm	2'-0 7/16"	621mm		
		1'-9"	533mm	2'-1 7/16"	646mm		
		1'-10"	559mm	2'-2 7/16"	672mm		
		1'-11"	584mm	2'-3 7/16"	697mm		
		2'-0"	610mm	2'-4 7/16"	722mm		
		28712	75113	2'-1"	635mm	2'-5 7/16"	748mm
				2'-2"	660mm	2'-6 7/16"	773mm
2'-3"	686mm			2'-7 7/16"	799mm		
2'-4"	711mm			2'-8 7/16"	824mm		
2'-5"	737mm			2'-9 7/16"	849mm		
2'-6"	762mm			2'-10 7/16"	875mm		
2'-7"	787mm			2'-11 7/16"	900mm		
2'-8"	813mm			3'-0 7/16"	926mm		
2'-9"	838mm			3'-1 7/16"	951mm		
2'-10"	864mm			3'-2 7/16"	976mm		
2'-11"	889mm			3'-3 7/16"	1002mm		
3'-0"	914mm			3'-4 7/16"	1027mm		
28713	75114			3'-1"	940mm	3'-5 7/16"	1053mm
				3'-2"	965mm	3'-6 7/16"	1078mm
		3'-3"	991mm	3'-7 7/16"	1103mm		
		3'-4"	1016mm	3'-8 7/16"	1129mm		

KIT PART #	DROP ANGLE PART #	DROP LENGTH		ETA-5 STACKUP	
28713	75114	3'-5"	1041mm	3'-9 7/16"	1154mm
		3'-6"	1067mm	3'-10 7/16"	1180mm
		3'-7"	1092mm	3'-11 7/16"	1205mm
		3'-8"	1118mm	4'-0 7/16"	1230mm
		3'-9"	1143mm	4'-1 7/16"	1256mm
		3'-10"	1168mm	4'-2 7/16"	1281mm
		3'-11"	1194mm	4'-3 7/16"	1307mm
		4'-0"	1219mm	4'-4 7/16"	1332mm
		4'-1"	1245mm	4'-5 7/16"	1357mm
		4'-2"	1270mm	4'-6 7/16"	1383mm
28714	75115	4'-3"	1295mm	4'-7 7/16"	1408mm
		4'-4"	1321mm	4'-8 7/16"	1434mm
		4'-5"	1346mm	4'-9 7/16"	1459mm
		4'-6"	1372mm	4'-10 7/16"	1484mm
		4'-7"	1397mm	4'-11 7/16"	1508mm
		4'-8"	1422mm	5'-0 7/16"	1535mm
		4'-9"	1448mm	5'-1 7/16"	1561mm
		4'-10"	1473mm	5'-2 7/16"	1586mm
		4'-11"	1499mm	5'-3 7/16"	1611mm
		5'-0"	1524mm	5'-4 7/16"	1637mm
28715	75116	5'-1"	1549mm	5'-5 7/16"	1662mm
		5'-2"	1575mm	5'-6 7/16"	1688mm
		5'-3"	1600mm	5'-7 7/16"	1713mm
		5'-4"	1626mm	5'-8 7/16"	1738mm
		5'-5"	1651mm	5'-9 7/16"	1764mm
		5'-6"	1676mm	5'-10 7/16"	1789mm
		5'-7"	1702mm	5'-11 7/16"	1815mm
		5'-8"	1727mm	6'-0 7/16"	1840mm
		5'-9"	1753mm	6'-1 7/16"	1865mm
		5'-10"	1778mm	6'-2 7/16"	1891mm
5'-11"	1803mm	6'-3 7/16"	1916mm		
6'-0"	1829mm	6'-4 7/16"	1942mm		

*Adjustable Hanger with safety cable sold separately

UNIFIED AIR TRACTOR

The lube free air tractor was developed to be a compact, and reliable alternative to those large air tractors most companies are familiar with.



Features

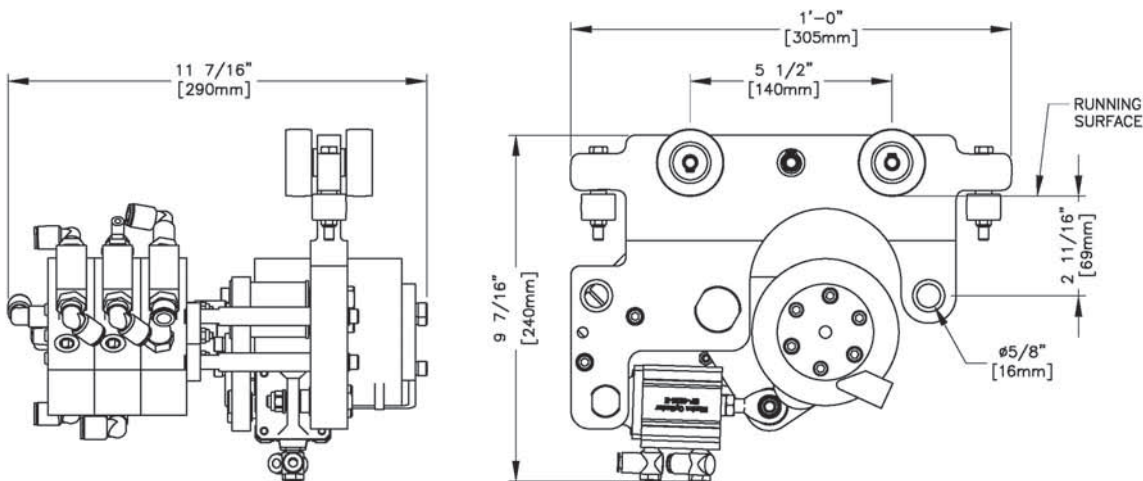
- **Lightweight and Compact**
- **Lube Free Air Motor**
- **Maintenance Friendly Design**
- **Quick Delivery, Excellent Pricing**

Control Package Options:

- C1 = SMC Control Pack w/Fwd/Rev 2-Button Control Pendant.
- C2 = SMC Control Pack Only. (Requires main air connection + Fwd/Rev signals)
- C3 = Base Tractor Only. No Control valves.
- C4 = SMC Control Pack w/4-Button Control Pendant (Fwd/Rev + ?/?)

Part Number

- **UAT-NB-C(x)-ETA4** Air Tractor to run on ETA-4/5 rail. Specify control pack above. Weight 30 lbs. (15kg)
- **25682** ETA-4/5 Tractor Tow Bar-Hitch
- **60315** Replacement Drive Wheel



Proper Tractor Operation: Tractor must come to a complete stop before it can be engaged in the opposite direction. If this process is not followed, damage to the Tractor will occur and the warranty will be void.

Designed for a working plant air pressure of: 87-102psi (600-700kPA)

***NB = No Brake**



UNIFIED AIR BALANCER

A proven ergonomic lifting and positioning device

- **Capacities** up to 485lbs. (220kg) single reeve - 1940lbs. (880kg) tandem reeved.
- **Safety** overload limit and check valve in case of loss of air supply.
- **Energy Efficient** only a fraction of a CFM per cycle required when compared to a pneumatic hoist.
- **Robust** precision mechanical design & powder coated housing ensures trouble free extended service life.
- Uses non-lubricated air, assures clean environment.
- Ideal for ergonomic handling applications and suspension of tools, weld guns & fixtures.
- All Non-Reeved balancers come equipped with a 25'-6" (9m) cable.



Control Styles

UBB = Basic Balancer with no controls

UAB = Balancer with Up/Down controls

UZB = Balancer with Zero G

Model #	Weight Capacity/Lift	Air Consumption
U_B-132	132lbs (60kg)/79in (2000mm)	.5 CFM(.85CMH)
U_B-220	220lbs (100kg)/118in (3000mm)	1.3 CFM(2.21CMH)
U_B-331	331lbs (150kg)/79in (2000mm)	1.3 CFM(2.21CMH)
U_B-485	485lbs (220kg)/79in (2000mm)	1.9 CFM(3.23 CMH)

- Wire Rope Units (Air Pressure 7kgf/cm²) (100 PSI)

Optional Accessories

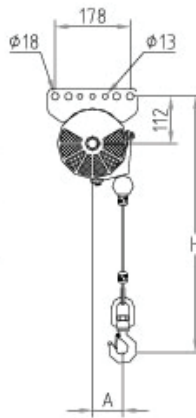
Part #	Description
99025	Up/Down Manifold
99026	Up/Down Control Kit—Includes Manifold, 12ft (3.65m) Hose and 2-button pendant
99100	Top Hook Assembly



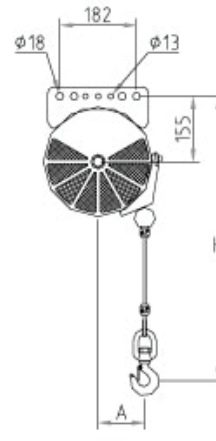
Single Type

Model	"A" Dimension
U_B-132	2.83 inch (72mm)
U_B-220	4.35 inch (110.5mm)
U_B-331	2.83 inch (72mm)
U_B-485	2.83 inch (72mm)

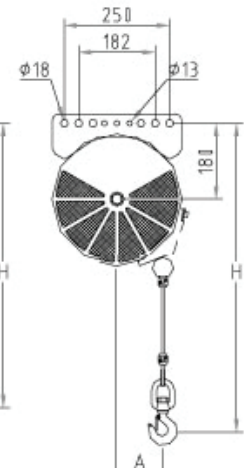
Single Type



U_B-132

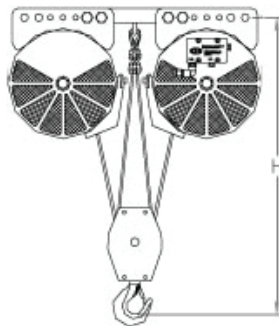


U_B-220, 331

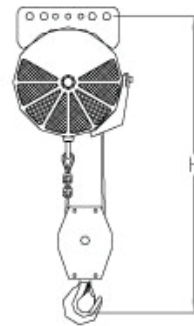


U_B-485

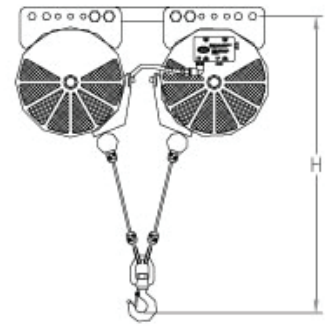
Tandem Reeved Type



Reeved Type



Tandem Type



Single Balancer

Model #	Capacity		Lift		D x L		H		Net Weight		CFM (per cycle)
	lbs	kg	in	mm	in	mm	in	mm	lbs	kg	
U_B-132-079	132	60	79	2000	6.1 x 15.43	155 x 392	23	600	51	23	.5
U_B-220-118	220	100	118	3000	10.24 x 15.75	260 x 400	28	700	94	42.5	1.3
U_B-331-079	331	150	79	2000	10.24 x 15.75	260 x 400	28	700	105	47	1.3
U_B-485-079	485	220	79	2000	12.21 x 15.75	310 x 400	30	750	110	50	1.9

Reeved Balancer (R) Tandem Balancer (T) Tandem-Reeved Balancer (TR)

Model #	Capacity		Lift		D x L		H		Net Weight	
	lbs	kg	in	mm	in	mm	in	mm	lbs	kg
U_B-440-59R	440	200	59	1500	10.24 x 15.75	260 x 400	28	700	104	47
U_B-440-118T	440	200	118	3000	2-10.24 x 15.76	260 x 400	28	700	203	92
U_B-662-39R	662	300	39	1000	10.24 x 15.77	260 x 400	28	700	99	45
U_B-661-79T	662	300	79	2000	2-10.24 x 15.78	260 x 400	28	700	198	90
U_B-970-39R	970	440	39	1000	12.21 x 15.75	310 x 400	30	750	124	56
U_B-970-79T	970	440	79	2000	2-12.21 x 15.75	310 x 400	30	750	243	110
U_B-882-59TR	882	400	59	1500	2-10.24 x 15.78	260 x 400	28	700	209	95
U_B-1323-39TR	1323	600	39	1000	2-10.24 x 15.79	260 x 400	28	700	203	92
U_B-1940-39TR	1940	880	39	1000	2-12.21 x 15.75	310 x 400	30	750	254	115

CAUTION

This bridge crane has a safe load rating, which has been clearly marked on both sides by the manufacturer. The total weight of the suspended load should never exceed 125% of this limit. The weight of all handling devices such as buckets, magnets, grabs, balancers, hoists, weldguns, etc. must be included as a part of the suspended load. The weight of such devices should therefore be determined and clearly marked.

Consideration should be given when installing hoisting devices. Load ratings for such devices may exceed the load rating of the bridge crane.

The operator should inspect this bridge crane for loose bolts and worn, cracked or distorted parts prior to use (inspection should include all handling devices and mounting equipment). Defective parts should be replaced with manufacturer-approved parts before use of bridge crane is resumed.

This bridge crane conforms to the safety standards of the U.S. Occupational Safety and Health Administration (OSHA). Any alteration of its structure or change in its rated load capacity may render null and void any manufacturer's warranties, expressed or implied.

***All dimensions are reference only and need to be verified with factory.**



CRANE SOLUTIONS



MAGNETEK

Yale



UNIFIED