

UNIFIED DROP ANGLE KITS



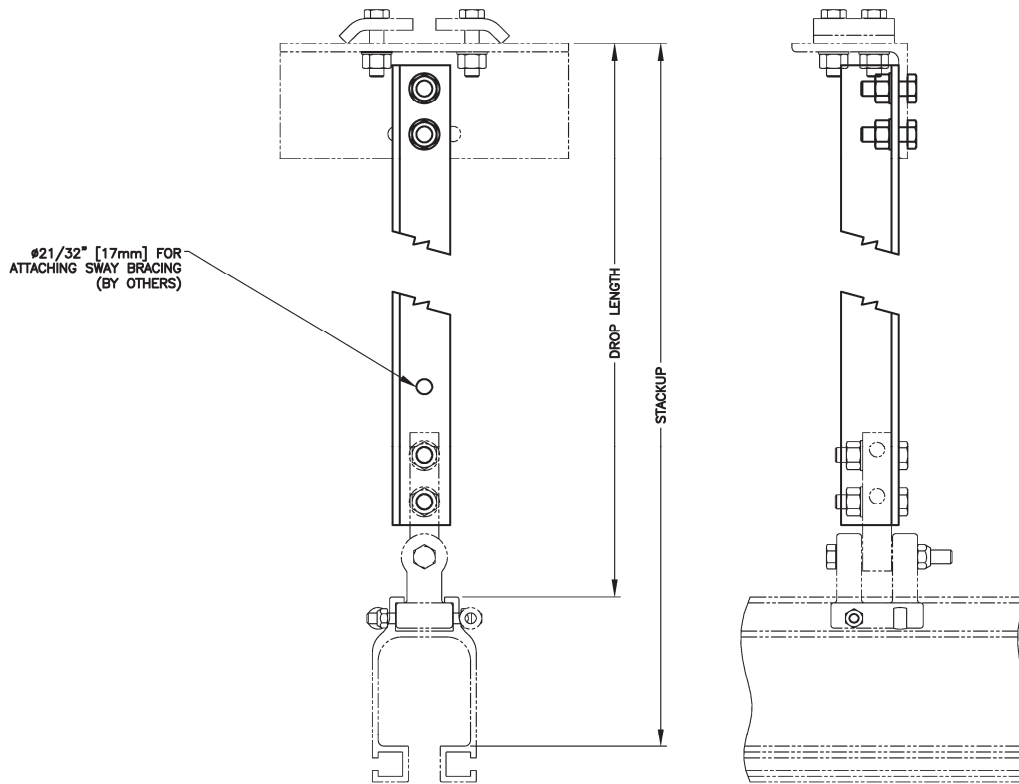
Beam Hanger

- Rated Load 3,500lbs (908kg)
- Beam Hanger sold separately
- Drop Angle Lengths 1'-2" (355mm) to 6'-0" (1829mm) require a cable hole
- Drop Angle Lengths 2'-0" (610mm) to 6'-0" (1829mm) require knee braces in both directions
- Knee Bracing by others
- Drops of 8" (203mm) to 11" (280mm) Consult Engineering



Adjustable Hanger

- Rated Load 3,000lbs (680kg)
- Adjustable Hanger sold separately
- Drop Angle Lengths 1'-2" (355mm) to 6'-0" (1829mm) require a cable hole
- Drop Angle Lengths 2'-0" (610mm) to 6'-0" (1829mm) require knee braces in both directions
- Knee Bracing by others
- Drops of 8" (203mm) to 11" (280mm) Consult Engineering

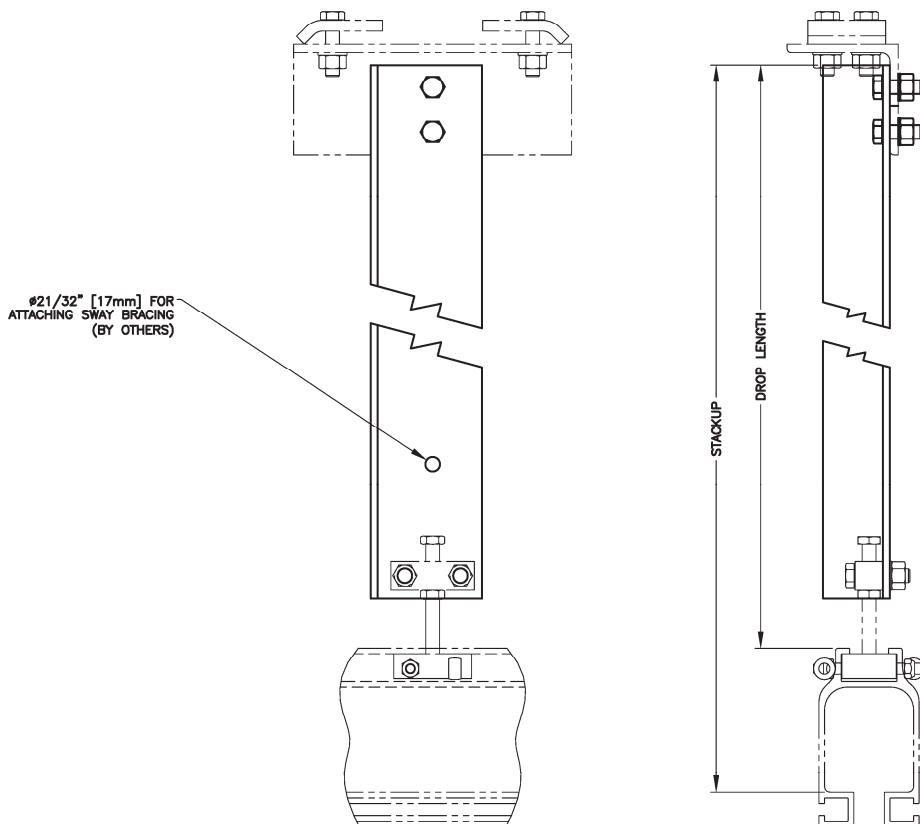


NOTE:
RATED LOAD 3500 LBS [1588 Kg].

KIT PART #	DROP ANGLE PART #	DROP LENGTH		STACKUP	
28705	75106	1'-0"	305mm	1'-6 1/2"	470mm
		1'-1"	330mm	1'-7 1/2"	495mm
		1'-2"	356mm	1'-8 1/2"	521mm
		1'-3"	381mm	1'-9 1/2"	546mm
		1'-4"	406mm	1'-10 1/2"	572mm
		1'-5"	432mm	1'-11 1/2"	597mm
		1'-6"	457mm	2'-0 1/2"	622mm
		1'-7"	483mm	2'-1 1/2"	648mm
		1'-8"	508mm	2'-2 1/2"	673mm
		1'-9"	533mm	2'-3 1/2"	699mm
		1'-10"	559mm	2'-4 1/2"	724mm
28706	75107	1'-11"	584mm	2'-5 1/2"	749mm
		2'-0"	610mm	2'-6 1/2"	775mm
		2'-1"	635mm	2'-7 1/2"	800mm
		2'-2"	660mm	2'-8 1/2"	826mm
		2'-3"	686mm	2'-9 1/2"	851mm
		2'-4"	711mm	2'-10 1/2"	876mm
		2'-5"	737mm	2'-11 1/2"	902mm
		2'-6"	762mm	3'-0 1/2"	927mm
		2'-7"	787mm	3'-1 1/2"	953mm
		2'-8"	813mm	3'-2 1/2"	978mm
		2'-9"	838mm	3'-3 1/2"	1003mm
28707	75108	2'-10"	864mm	3'-4 1/2"	1029mm
		2'-11"	889mm	3'-5 1/2"	1054mm
		3'-0"	914mm	3'-6 1/2"	1080mm
		3'-1"	940mm	3'-7 1/2"	1105mm
		3'-2"	965mm	3'-8 1/2"	1130mm
		3'-3"	991mm	3'-9 1/2"	1156mm
		3'-4"	1016mm	3'-10 1/2"	1181mm
		3'-5"	1041mm	3'-11 1/2"	1207mm
		3'-6"	1067mm	4'-0 1/2"	1232mm

KIT PART #	DROP ANGLE PART #	DROP LENGTH		STACKUP	
28707	75108	3'-7"	1092mm	4'-1 1/2"	1257mm
		3'-8"	1118mm	4'-2 1/2"	1283mm
		3'-9"	1143mm	4'-3 1/2"	1308mm
		3'-10"	1168mm	4'-4 1/2"	1334mm
		3'-11"	1194mm	4'-5 1/2"	1359mm
		4'-0"	1219mm	4'-6 1/2"	1384mm
		4'-1"	1245mm	4'-7 1/2"	1410mm
28708	75109	4'-2"	1270mm	4'-8 1/2"	1435mm
		4'-3"	1295mm	4'-9 1/2"	1461mm
		4'-4"	1321mm	4'-10 1/2"	1486mm
		4'-5"	1346mm	4'-11 1/2"	1511mm
		4'-6"	1372mm	5'-0 1/2"	1537mm
		4'-7"	1397mm	5'-1 1/2"	1562mm
		4'-8"	1422mm	5'-2 1/2"	1588mm
28709	75110	4'-9"	1448mm	5'-3 1/2"	1613mm
		4'-10"	1473mm	5'-4 1/2"	1638mm
		4'-11"	1499mm	5'-5 1/2"	1664mm
		5'-0"	1524mm	5'-6 1/2"	1689mm
		5'-1"	1549mm	5'-7 1/2"	1715mm
		5'-2"	1575mm	5'-8 1/2"	1740mm
		5'-3"	1600mm	5'-9 1/2"	1765mm
		5'-4"	1626mm	5'-10 1/2"	1791mm
		5'-5"	1651mm	5'-11 1/2"	1816mm
		5'-6"	1676mm	6'-0 1/2"	1842mm
		5'-7"	1702mm	6'-1 1/2"	1867mm
5'-8"	1727mm	6'-2 1/2"	1892mm		
5'-9"	1753mm	6'-3 1/2"	1918mm		
5'-10"	1778mm	6'-4 1/2"	1943mm		
5'-11"	1803mm	6'-5 1/2"	1969mm		
6'-0"	1829mm	6'-6 1/2"	1994mm		

*Beam Hanger sold separately



NOTE:
RATED LOAD 3000 LBS [1361 Kg].

KIT PART #	DROP ANGLE PART #	DROP LENGTH		STACKUP			
		Drop Length	Drop Length	Stackup	Stackup		
28716	75117	9"	229mm	1'-3 1/2"	394mm		
		10"	254mm	1'-4 1/2"	419mm		
		11"	279mm	1'-5 1/2"	445mm		
		1'-0"	305mm	1'-6 1/2"	470mm		
28717	75118	1'-1"	330mm	1'-7 1/2"	495mm		
		1'-2"	356mm	1'-8 1/2"	521mm		
		1'-3"	381mm	1'-9 1/2"	546mm		
		1'-4"	406mm	1'-10 1/2"	572mm		
		1'-5"	432mm	1'-11 1/2"	597mm		
		1'-6"	457mm	2'-0 1/2"	622mm		
		1'-7"	483mm	2'-1 1/2"	648mm		
		1'-8"	508mm	2'-2 1/2"	673mm		
		1'-9"	533mm	2'-3 1/2"	699mm		
		1'-10"	559mm	2'-4 1/2"	724mm		
		1'-11"	584mm	2'-5 1/2"	749mm		
		2'-0"	610mm	2'-6 1/2"	775mm		
		28718	75119	2'-1"	635mm	2'-7 1/2"	800mm
				2'-2"	660mm	2'-8 1/2"	826mm
2'-3"	686mm			2'-9 1/2"	851mm		
2'-4"	711mm			2'-10 1/2"	876mm		
2'-5"	737mm			2'-11 1/2"	902mm		
2'-6"	762mm			3'-0 1/2"	927mm		
2'-7"	787mm			3'-1 1/2"	953mm		
2'-8"	813mm			3'-2 1/2"	978mm		
2'-9"	838mm			3'-3 1/2"	1003mm		
2'-10"	864mm			3'-4 1/2"	1029mm		
2'-11"	889mm			3'-5 1/2"	1054mm		
3'-0"	914mm			3'-6 1/2"	1080mm		
28719	75120			3'-1"	940mm	3'-7 1/2"	1105mm
				3'-2"	965mm	3'-8 1/2"	1130mm
		3'-3"	991mm	3'-9 1/2"	1156mm		
		3'-4"	1016mm	3'-10 1/2"	1181mm		

KIT PART #	DROP ANGLE PART #	DROP LENGTH		STACKUP	
		Drop Length	Drop Length	Stackup	Stackup
28719	75120	3'-5"	1041mm	3'-11 1/2"	1207mm
		3'-6"	1067mm	4'-0 1/2"	1232mm
		3'-7"	1092mm	4'-1 1/2"	1257mm
		3'-8"	1118mm	4'-2 1/2"	1283mm
		3'-9"	1143mm	4'-3 1/2"	1308mm
		3'-10"	1168mm	4'-4 1/2"	1334mm
		3'-11"	1194mm	4'-5 1/2"	1359mm
		4'-0"	1219mm	4'-6 1/2"	1384mm
		4'-1"	1245mm	4'-7 1/2"	1410mm
		4'-2"	1270mm	4'-8 1/2"	1435mm
28720	75121	4'-3"	1295mm	4'-9 1/2"	1461mm
		4'-4"	1321mm	4'-10 1/2"	1486mm
		4'-5"	1346mm	4'-11 1/2"	1511mm
		4'-6"	1372mm	5'-0 1/2"	1537mm
		4'-7"	1397mm	5'-1 1/2"	1562mm
		4'-8"	1422mm	5'-2 1/2"	1588mm
		4'-9"	1448mm	5'-3 1/2"	1613mm
		4'-10"	1473mm	5'-4 1/2"	1638mm
		4'-11"	1499mm	5'-5 1/2"	1664mm
		5'-0"	1524mm	5'-6 1/2"	1689mm
28721	75122	5'-1"	1549mm	5'-7 1/2"	1715mm
		5'-2"	1575mm	5'-8 1/2"	1740mm
		5'-3"	1600mm	5'-9 1/2"	1765mm
		5'-4"	1626mm	5'-10 1/2"	1791mm
		5'-5"	1651mm	5'-11 1/2"	1816mm
		5'-6"	1676mm	6'-0 1/2"	1842mm
		5'-7"	1702mm	6'-1 1/2"	1867mm
		5'-8"	1727mm	6'-2 1/2"	1892mm
		5'-9"	1753mm	6'-3 1/2"	1918mm
		5'-10"	1778mm	6'-4 1/2"	1943mm
		5'-11"	1803mm	6'-5 1/2"	1968mm
		6'-0"	1829mm	6'-6 1/2"	1994mm

*Adjustable Hanger sold separately